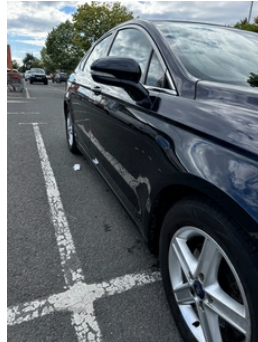


20 Stracam Corner, Belfast, BT6 0EN
07301228927

Ford Mondeo 2.0 TDCi EConetic Titanium 5dr | Jun 2015

FULL YEAR MOT 06/ 09/ 2025

£4,500 O.N.O



2015 Mondeo Titanium Econetic TDCI
Full year MOT 06/09/2025
2.0lt diesel
£20 a year road tax !
130,000 miles
4 new tyres
New set of 4 alloys 16"
New brake pads and disks
New droplinks
New calibers
Timing belt, clutch & gearbox 100%
Full lcd display dash inc. satnav
DAB radio
Bluetooth
Clean interior
Chrome grill
Almost £900 work finished on it

Any test drive welcome

£4,500 ONO

Miles:	130000
Fuel Type:	Diesel
Transmission:	Manual
Colour:	Black
Engine Size:	1997
CO2 Emission:	107
Tax Band:	B (£20 p/a)
Body Style:	Saloon
Reg:	XFZ6203

Technical Specs

DIMENSIONS	
Length:	4871mm
Width:	1852mm
Height:	1482mm
Seats:	5

Luggage Capacity (Seats Up):	541L
Gross Weight:	2260KG
Max. Loading Weight:	751KG

PERFORMANCE & ECONOMY

Fuel Consum. (Urban Cold):	61.4MPG
Fuel Consum. (Extra Urban):	76.4MPG
Fuel Consum. (Combined):	68.9MPG
Fuel Tank Capacity:	62L
Number Of Gears:	6 SPEED
Top Speed:	134MPH
Acceleration 0-100 km/h:	9.4s
Engine Power BHP:	147.5BHP

USED CARS NI

Vehicle Features

'Ford Power' starter button, 'Quickclear' heated windscreen/heated washer jets, 16" alloy wheels, ABS+EBA, Auto dimming interior mirror, Automatic headlights, Automatic rain sensing wipers, Bluetooth connectivity with voice control, Body coloured bumpers, Body colour rocker mouldings, Centre console with armrest, Chrome window surround, Curtain airbags, Diesel particulate filter, Driver's lumbar support, Driver/front passenger airbag, Drivers knee airbag, Dual zone air conditioning, Easy fuel capless refuelling system, Electric adjustable door mirrors, Electric folding door mirrors, Electric front windows, Electric rear windows with global closing, Electronic parking brake, ESP + traction control, Folding rear seats, Ford SYNC 2 with 8" colour touch screen, Front fog lights with chrome surrounds, Front headrests, Height adjustable passenger seat with lumbar support, Hill start assist, Intelligent Protection System (IPS), Isofix on 2nd row rear seats, Keyless Start, Lane keep assist, Leather steering wheel, LED tail lights, PAS, Radio/CD, Rear armrest, Rear headrests, Rear wiper, Remote central double locking, Ski hatch, Sports seats, Sports suspension, SYNC Emergency Assistance, TFT cluster screen, Thatcham Cat.1 alarm, Traffic sign recognition, Trip computer, Tyre pressure monitoring system, USB socket, Vector Cloth Upholstery