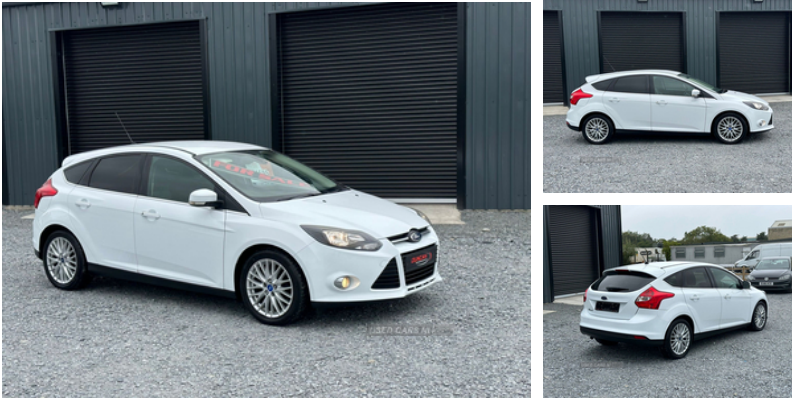


## Ford Focus 1.6 TDCi 115 Zetec 5dr | Jun 2014

# £4,595



2014 FORD FOCUS ZETEC TDCI

1.6 DIESEL

120,000 MILES

SOLD WITH FULL YEARS MOT

REGISTERED JUNE 2014

FULLY SERVICED AND VALTED READY TO GO

ALL THIS FOR £4595

NEXT DAY DELIVERY ANY WHERE IN IRELAND/NI

CARS CAN BE SHOWN 7 DAYS A WEEK

WE ALSO CAN DO FULL WALK AROUND VIDEO OF THE VEHICLE ON REQUEST

SMALL DEPOSIT SECURES THIS CAR PAYMENT BY CARD OR BANK TRANSFER

NOW ACCEPTING CREDIT CARD PAYMENTS /DEBIT CARD

ANY TEST DRIVE OR INSPECTION WELCOME

FINANCE ONLY AVAILABLE TO UK/NI CUSTOMERS ONLY

CALL US TODAY TO ARRANGE A VIEWING OR CALL IN TO , CO TYRONE.

<b>Miles:</b>	120000
<b>Fuel Type:</b>	Diesel
<b>Transmission:</b>	Manual
<b>Colour:</b>	White
<b>Engine Size:</b>	1560
<b>CO2 Emission:</b>	109
<b>Tax Band:</b>	B (£20 p/a)
<b>Body Style:</b>	Hatchback
<b>Insurance group:</b>	15E
<b>Reg:</b>	AK14YLX

### Technical Specs

#### DIMENSIONS

<b>Length:</b>	4358mm
<b>Width:</b>	1823mm
<b>Height:</b>	1484mm
<b>Seats:</b>	5
<b>Luggage Capacity (Seats Up):</b>	316L
<b>Gross Weight:</b>	1900KG
<b>Max. Loading Weight:</b>	556KG

#### PERFORMANCE & ECONOMY

<b>Fuel Consum. (Urban Cold):</b>	55.4MPG
<b>Fuel Consum. (Extra Urban):</b>	76.4MPG
<b>Fuel Consum. (Combined):</b>	67.3MPG
<b>Fuel Tank Capacity:</b>	53L
<b>Number Of Gears:</b>	6 SPEED
<b>Top Speed:</b>	120MPH
<b>Acceleration 0-100 km/h:</b>	10.8s
<b>Engine Power BHP:</b>	114BHP

CONAL 07928493115 8F DUBLIN RD INDUSTRIAL ESTATE  
,STRABANE ,BT829EA

THANKS FOR LOOKING

## Vehicle Features

'Quickclear' heated windscreen/heated washer jets, 4 spoke leather steering wheel with silver accents, 6 speakers, 12V power point front/rear, 60/40 split back and cushion rear seats with 2 height adjustable headrests, ABS+Electronic Brake force Distribution, Air conditioning - CFC-free, Anti-burst high-security shielded door locks, Black headlamp bezels, Body colour bumpers, Body colour door handles, Body colour electric adjustable heated door mirrors, Body colour rear spoiler, Centre console storage box, Chrome finish on upper door line, Cloth upholstery, Courtesy light in luggage compartment, DAB radio/CD and Ford SYNC Bluetooth connection with voice control, Diesel particulate filter, Digital clock, Door ajar warning, Driver's seat manual height adjust, Driver's seat with adjustable lumbar support, Driver/passenger front seatback pockets, Driver airbag, Easy fuel capless refuelling system, Eco mode, Electric boot release, ESP with traction control + emergency brake assist, Exterior temperature gauge, Front and rear folding grab handles (coat hooks on rear), Front fog lights, Front inertia reel height adjustable seatbelts with pre-tensioners, Front passenger airbag, Front side airbags, Front variable intermittent wipers with electric wash, Gear lever knob with satin aluminium insert, Handbrake release button with aluminium finish, Headlight levelling control, Heated rear window, Height adjustable front headrests, Illuminated heater controls, Immobiliser-Passive Anti-Theft System (PATS), Isofix child seat preparation, Lights on warning, Locking wheel nuts, Low screen washer fluid warning, PAS, Pollen/active carbon filters, Reach + rake adjustable steering column, Remote central double locking, Side curtain airbags, Sports style front seats, Steering column with mounted audio controls, Tailgate wash/wipe, Thatcham Cat.1 alarm, Third fixed centre rear headrest, Three rear inertia reel lap/diagonal seatbelts, Tie down hooks in luggage area, Trip computer, Tyre pressure monitoring system, USB connection