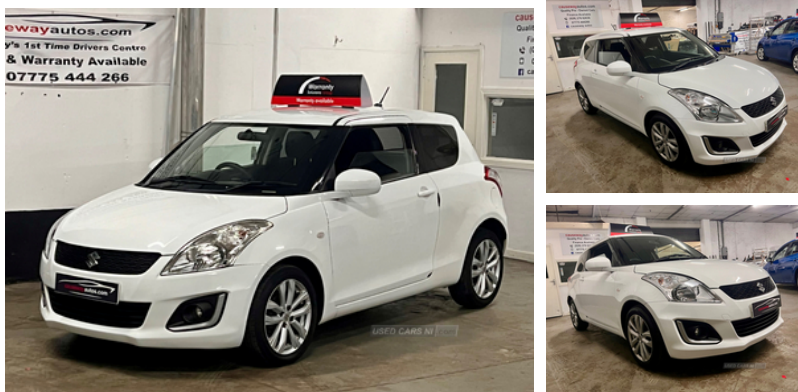


Suzuki Swift 1.2 SZ3 3dr | Sep 2013

LOW MILES.

£3,995



Lovely wee Suzuki Swift with only 63000 miles. Fully serviced and driving perfectly. MOT to March 25. Ideal starter car. Great finance rates and warranties available. usual dealer facilities. Causeway Autos are authorised and regulated by the Financial Conduct Authority.

Vehicle Features

2 speed wipers+intermittent wipe, 3 cupholders, 3 spoke leather covered steering wheel, 4 x 3 point seatbelts, 6 speakers, 16" alloy wheels, 60/40 split rear seats, ABS+EBD+Brake assist, Accessory socket, Air conditioning, Bluetooth audio streaming, Bluetooth hands free telephone connection, Body colour door mirrors and handles, Body coloured bumpers, Centre console storage, Cloth seat trim, Curtain airbags, Deadlocks, Door ajar warning lamp, Door pockets with bottle holder, Driver/passenger sunvisors with ticket holders + vanity mirrors, Driver airbag, Driver seatbelt warning indicator, Drivers knee airbag, Electric door mirrors, Electric front windows + drivers one touch, ESP + traction control, Front/rear assist grips, Front fog lights, Front head restraints, Front map light, Front passenger airbag deactivation, Front seatbelt pretensioners with force limiters, Fuel consumption screen, Glovebox, Headlamp levelling, Heated door mirrors, Height adjustable driver's seat, Height adjustable front seatbelts, Immobiliser, Isofix, Key in reminder, Lights on warning, Low fuel level warning light, Luggage area lamp, Outside temperature display, PAS, Passenger airbag, Passenger seat back pocket, Passenger seatbelt warning indicator, Pollen filter, Radio/CD + MP3, Rear headrests, Rear wiper, Remote central locking, Remote fuel cap release, Side airbags, Side impact protection beams, Space saver spare wheel, Steering wheel audio controls, Storage area with lid, Tachometer, Tilt

Miles:	63000
Fuel Type:	Petrol
Transmission:	Manual
Colour:	White
Engine Size:	1242
CO2 Emission:	116
Tax Band:	C (£35 p/a)
Body Style:	Hatchback
Insurance group:	11E
Reg:	PN63YAU

Technical Specs

DIMENSIONS	
Length:	3850mm
Width:	1695mm
Height:	1510mm
Seats:	4
Luggage Capacity (Seats Up):	211L
Gross Weight:	1480KG
Max. Loading Weight:	475KG

PERFORMANCE & ECONOMY	
Fuel Consum. (Urban Cold):	46.3MPG
Fuel Consum. (Extra Urban):	64.2MPG
Fuel Consum. (Combined):	56.5MPG
Fuel Tank Capacity:	42L
Number Of Gears:	5 SPEED
Top Speed:	103MPH
Acceleration 0-100 km/h:	12.3s
Engine Power BHP:	92.5BHP



adjustable steering wheel, Tinted glass, Top tether anchor plate
for isofix child seat, Trip computer, USB interface