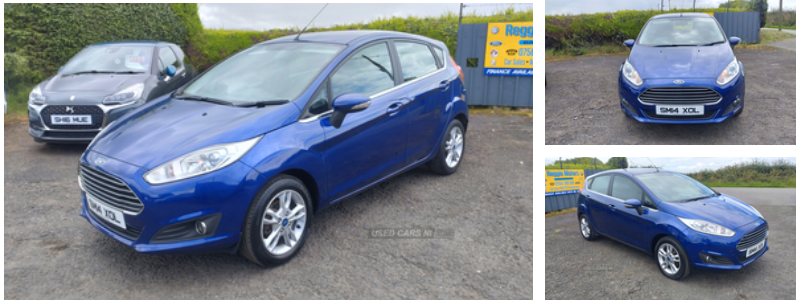


**Ford Fiesta 1.25 82 Zetec 5dr | Aug 2014**  
**CHEAP TAX , CHEAP INSURANCE, EASY RUN.**

**£4,150**



Reggie Motors Ballykelly  
\*\*\*\*\*Finance Available\*\*\*\*\*  
(£109 p/month)

2014 FORD FIESTA ZETEC 1.2 Petrol. "£30 Tax"  
(£4150)

BE SOLD WITH ONE YEAR MOT  
105K WITH A SERVICE HISTORY  
FULLY SERVICED & CHECKED OVER IN WORKSHOP  
CHEAP TAX  
ZETEC MODEL  
PARKING SENSORS  
ALLOYS  
5 SPEED MANUAL  
LED DAYTIME LIGHTS  
BLUETOOTH  
HANDS FREE PHONE  
R/C/L, AIR CON, E/W

Only group 7 insurance so ideal for firsttime drivers.

Finance Available  
All Credit/Debit Cards  
3 Months Warranty  
Delivery Available  
On Site Workshop  
All Cars HPI Clear

6 or 12 Months Extended Warranty Also Available.

Call Me On 07564 398 586

<b>Miles:</b>	105000
<b>Fuel Type:</b>	Petrol
<b>Transmission:</b>	Manual
<b>Colour:</b>	Blue
<b>Engine Size:</b>	1242
<b>CO2 Emission:</b>	120
<b>Tax Band:</b>	C (£35 p/a)
<b>Body Style:</b>	Hatchback
<b>Insurance group:</b>	7E
<b>Reg:</b>	SM14XOL

**Technical Specs**

**DIMENSIONS**

<b>Length:</b>	3969mm
<b>Width:</b>	1722mm
<b>Height:</b>	1495mm
<b>Seats:</b>	5
<b>Luggage Capacity (Seats Up):</b>	290L
<b>Gross Weight:</b>	1530KG
<b>Max. Loading Weight:</b>	475KG

**PERFORMANCE & ECONOMY**

<b>Fuel Consum. (Urban Cold):</b>	41.5MPG
<b>Fuel Consum. (Extra Urban):</b>	67.3MPG
<b>Fuel Consum. (Combined):</b>	54.3MPG
<b>Fuel Tank Capacity:</b>	42L
<b>Number Of Gears:</b>	5 SPEED
<b>Top Speed:</b>	104MPH
<b>Acceleration 0-100 km/h:</b>	13.3s
<b>Engine Power BHP:</b>	80.5BHP

LOCATED IN THE BALLYKELLY AREA ON THE BRIGHTER ROAD  
OVER 20 USED CARS FOR SALE STARTING FROM [£2000 TO  
£10,000]

"CHECK OUT MY FACEBOOK PAGE TO SEE ALL CARS"

"Reggie Motors Ballykelly"

## Vehicle Features

3 point rear seatbelts x3, 3 spoke leather steering wheel, 6 speakers, 60/40 split folding rear seat, ABS+EBA, Adjustable head restraints, Ambient lighting, Auxiliary input socket, Body colour door handles, Body colour electric adjustable heated door mirrors, Body colour rear spoiler, Body colour tailgate handle, Boot carpet, Chrome beltline, Chrome surround for front fog lights, Cloth upholstery, Courtesy headlamp delay, Curtain airbags, Day running lights, Driver and passenger airbags, Drivers knee airbag, Electric front windows/one touch facility, Electric power steering, ESP + traction control, Footwell illumination, Front fog lights, Front map reading lights, Front passenger airbag deactivation, Front seatback pockets, Front side airbags, Hill start assist, Illuminated glovebox, Immobiliser, Leather trimmed handbrake handle, Load area light, Manual air conditioning, Manual seat adjustment, Pollen filter, Quickclear heated windscreen, Rake/reach adjustable steering wheel, Rear wiper, Remote central locking, Steering wheel mounted controls, Tinted glass, Trip computer, Tyre pressure monitoring system, Upper front grille chrome surround, USB connection