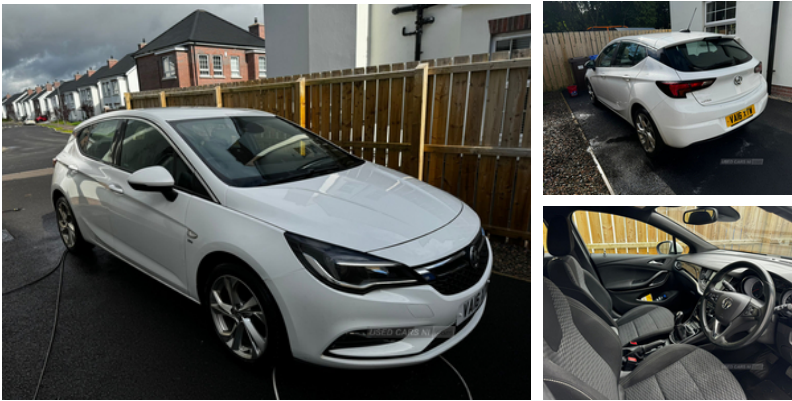


**Vauxhall Astra 1.4i 16V SRi 5dr | Aug 2016****£4,500** O.N.O

MOT to July 2025.

Fully serviced. Car comes with 2 keys. Automatic windows, heated mirrors, CarPlay, Android Auto, and more. If required more info please get in touch.

**Vehicle Features**

3 spoke leather covered steering wheel, 3x3 point rear seatbelts, 4 Lashing eyes in boot, 6 speakers, 12V power point front, 17" 5 twin spoke alloy wheels, 60/40 split rear seats, ABS, Adaptive brake lights, Adjustable front armrest, Bluetooth connectivity including audio streaming, Body colour door handles, Body coloured door mirrors, Body colour rear roof spoiler, Centre console with covered storage and cupholders, Child locks on rear doors, Chrome effect upper window trim, Chrome front grille, Chrome headlight surround, Chrome interior door handles, Cruise control + speed limiter, DAB Digital radio, Deadlock, Door to door illumination, Driver's storage box, Driver/Front Passenger airbags, Driver/passenger sunvisors, Driving assistance pack 1 - Astra, Electrically adjustable and heated door mirrors, Electric speed sensitive power steering, Electronic engine immobiliser, ESP, External temperature gauge, Formula cloth upholstery, Front/rear courtesy lights, Front and rear curtain airbags, Front and rear door pockets, Front fog lamps, Front reading lights, Front red LED ambient lighting, Front seat back storage pockets, Front seat side impact airbags, Gloss black finish B pillar, Gloss black finish C pillar, Glovebox, Hazard warning lamps, Heated rear window, Height adjustable front/rear head restraints, Hill start assist, Illuminated load area, Illuminated vanity mirrors, Intermittent rear wash/wipe, Isofix system on outer rear seats, Leather steering wheel, LED daytime running lights, Locking wheel bolts, Low fuel level warning light, Luggage compartment cover, Mobile App interface, Multi function trip computer, One touch electric front/rear windows, Passenger airbag deactivate

<b>Miles:</b>	100000
<b>Fuel Type:</b>	Petrol
<b>Transmission:</b>	Manual
<b>Colour:</b>	White
<b>Engine Size:</b>	1399
<b>CO2 Emission:</b>	128
<b>Tax Band:</b>	D (£160 p/a)
<b>Body Style:</b>	Hatchback
<b>Reg:</b>	VA16XTW

**Technical Specs**

DIMENSIONS	
<b>Length:</b>	4370mm
<b>Width:</b>	1809mm
<b>Height:</b>	1485mm
<b>Seats:</b>	5
<b>Luggage Capacity (Seats Up):</b>	370L
<b>Gross Weight:</b>	1760KG
<b>Max. Loading Weight:</b>	587KG
PERFORMANCE & ECONOMY	
<b>Fuel Consum. (Urban Cold):</b>	37.7MPG
<b>Fuel Consum. (Extra Urban):</b>	64.2MPG
<b>Fuel Consum. (Combined):</b>	51.4MPG
<b>Fuel Tank Capacity:</b>	48L
<b>Number Of Gears:</b>	5 SPEED
<b>Top Speed:</b>	115MPH
<b>Engine Power BHP:</b>	99.2BHP

switch, Pedal release system, R4 IntelliLink with 7" touch screen, Reach + rake adjustable steering column, Remote central locking, Rev counter, Seatbelt pretensioners on front/outer rear seats, Service indicator, Solar glass windscreen, Steering wheel mounted audio controls, Tinted windscreen, Trailer Stability Programme, Tyre pressure monitoring system, USB port, Vauxhall OnStar emergency assistance