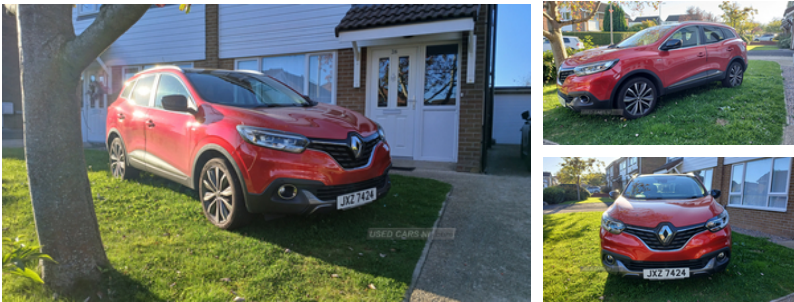


## Renault Kadjar 1.2 TCE Signature Nav 5dr | Sep 2016

# £7,950

**LADY OWNER FROM NEW, BEST PRICED IN NI!!**



One lady owner from new.  
Full service history including recent service pre sale.

Great spec including BOSE and full glass roof.

45 MPG

Won't be faulted any test welcome.

### Vehicle Features

3 height adjustable rear headrests, 12v power outlet - front, 19" Alloy wheels, 60/40 split folding rear seat, ABS/EBD, Adjustable dashboard illumination, Air recirculation system, Automatic headlights and windscreen wipers, Bluetooth system, Body colour door handles, Body coloured bumpers, Bodyside mouldings with chrome inserts, Bose Premium Audio system with 7 premium speakers + subwoofer, Brake assist function, Centre rear armrest with cup holder, Chrome exterior trim, Chrome window surround, Cornering front fog lights, Cruise control + speed limiter, DAB Digital radio, Deadlocks, Door/boot open warning light, Driver's seat with lumbar adjustment, Driver/passenger 2 stage auto adaptive airbags, Driver/passenger reading lights, Driver/passenger sunvisors and illuminated vanity mirrors, Dual zone automatic climate control, Eco mode, Electric adjustable/heated/folding door mirrors, Electrochrome rear view mirror, Electronic parking brake, ESP + Traction control + Understeer control, Exterior temperature gauge, Extra tinted glass in rear windows and tailgate, Fingertip controls for audio system, Fixed panoramic glass sunroof, Front and rear curtain airbags, Front and rear electric windows, Front and rear parking sensors, Front centre armrest, Front courtesy lights, Front footwell illumination, Front lateral airbags, Front

<b>Miles:</b>	42500
<b>Fuel Type:</b>	Petrol
<b>Transmission:</b>	Manual
<b>Colour:</b>	Red
<b>Engine Size:</b>	1197
<b>CO2 Emission:</b>	130
<b>Tax Band:</b>	D (£160 p/a)
<b>Body Style:</b>	Sport utility vehicle
<b>Reg:</b>	Jx7424

### Technical Specs

DIMENSIONS	
<b>Length:</b>	4449mm
<b>Width:</b>	1836mm
<b>Height:</b>	1607mm
<b>Seats:</b>	5
<b>Luggage Capacity (Seats Up):</b>	864L
<b>Gross Weight:</b>	1866KG
<b>Max. Loading Weight:</b>	546KG
PERFORMANCE & ECONOMY	
<b>Fuel Consum. (Urban Cold):</b>	40.6MPG
<b>Fuel Consum. (Extra Urban):</b>	55.4MPG
<b>Fuel Consum. (Combined):</b>	48.7MPG
<b>Fuel Tank Capacity:</b>	55L
<b>Number Of Gears:</b>	6 SPEED
<b>Top Speed:</b>	119MPH
<b>Acceleration 0-100 km/h:</b>	10.1s
<b>Engine Power BHP:</b>	128.7BHP

seat belts warning, Front skid plate, Front wipers with variable intermittent facility, Gloss black door mirrors, Hands free Renault card, Heated rear windscreen, Height/reach adjust steering wheel, Height adjustable front headrests, Height adjustable front seatbelts, Hill start assist, Illuminated boot, Insurance approved Cat 1 alarm system, Insurance Approved Immobiliser, Integrated fuel filler cap, Isofix system on outer rear seats, LED daytime running lights, LED Headlights, Nappa leather steering wheel, Oil level gauge, One touch easy folding rear seating system, PAS, Passenger airbag deactivation system, Pollen filter, R-Link Multimedia system with 7" touch screen, RAID (Renault Anti-Intruder Device), Rear courtesy lights, Rear passenger heating ducts, Rear seatbelt warning indicator, Rear skid plate, Rear wiper, Remote central locking, Rev counter, Roof rails, satellite navigation and western European map, Three 3 point rear seatbelts, Traction control, Traffic sign recognition, Trip computer, Tyre inflation kit, Tyre pressure monitor, USB connection, Variable boot floor, Visio system - lane departure and high beam assist