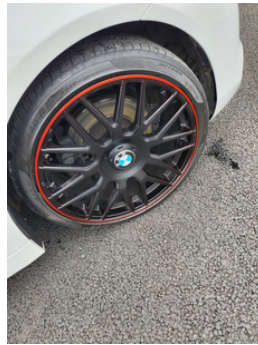


BMW 4 Series 420d [190] Sport 2dr Auto [Business Media] | May 2017

£13,750 O.N.O



Miles:	59500
Fuel Type:	Diesel
Transmission:	Automatic/Other
Colour:	White
Engine Size:	1995
CO2 Emission:	124
Tax Band:	Petrol/Diesel (£190 p/a)
Body Style:	Convertible
Reg:	JT10MCL

Technical Specs

DIMENSIONS	
Length:	4640mm
Width:	1825mm
Height:	1384mm
Seats:	4
Luggage Capacity (Seats Up):	370L
Gross Weight:	2185KG
Max. Loading Weight:	470KG

PERFORMANCE & ECONOMY	
Fuel Consum. (Urban Cold):	50.4MPG
Fuel Consum. (Extra Urban):	67.3MPG
Fuel Consum. (Combined):	60.1MPG
Fuel Tank Capacity:	57L
Number Of Gears:	8 SPEED
Top Speed:	142MPH
Acceleration 0-100 km/h:	8s
Engine Power BHP:	187.7BHP

MOT August 2025 just serviced. EGR recall complete by BMW Portadown in July 2024. Pirelli runflats all round 10% wear on new alloys. Comes with all weather cover.

Vehicle Features

2 speed adjustable intermittent wipers with wash/wipe function, 3 point seatbelts on all seats, 12V sockets in front centre console and passenger footwell, ABS/EBD, Anthracite Velour floor mats, Auto dimming rear view mirror, Automatic Stability Control (ASC), Bluetooth audio streaming, BMW emergency call, BMW Online services, BMW professional radio/CD/MP3, BMW Teleservices, Body colour bumpers, Body colour door handles, Body colour roof mouldings, Brake pad wear indicator warning light, CBC - (Cornering brake control), Check control system, Chrome kidney grille with black vertical slats, Crash Sensor - activates hazard/interior lighting + unlocks doors, DAB Digital radio, Diesel particulate filter, Door/boot open warning, Drive away door locking, Drive Performance Control, Driver/Front Passenger airbags, Driver seatbelt warning indicator, DSC+, Dual chrome exhaust, Dual zone climate control, Dynamic brake control, Dynamic Traction Control - DTC, Electric adjustable heated door mirrors, Electric front windows/one touch facility, Electronic immobiliser, Extended lights package - 4 Series, Folding front centre armrest with storage compartment, Folding

storage compartment with glasses holder + coin tray, Follow me home headlights, Front/rear armrests within door panels, Front/rear Parking distance control, Front cupholders x 2, Front door storage with bottle holder, Front head restraints, Front seatbelt force limiters, Front seatbelt pretensioner, Front side airbags, Front sports seats with electric side bolster adjustment, Glovebox with lid, Heated front seats, Heated windscreen washer jets, Heat insulating tinted glass, Hill start assist, Integrated rear head restraints, ISOFIX child seat preparation+airbag deactivation, Lashing eyelets in boot, Leather handbrake grip, LED daytime running lights, LED front fog lights, Lights on warning, Oil temperature gauge, On board computer, Outside temperature display, Rain sensor including auto headlights activation, Reach + rake adjustable steering column, Rear centre armrest, Remote central locking, Remote control Thatcham category 1 alarm, Roll over protection, Run flat indicator, Run flat tyres, Service interval indicator, Sports function on gearbox with steering wheel mounted gearshift paddles, Stop/start button, Storage compartment behind rear seat, Storage compartment in centre rear seat base, Storage compartment in rear centre console, Toolkit located in luggage compartment, Tyre pressure monitor, Warning triangle and first aid kit, Windscreen with grey shadeband