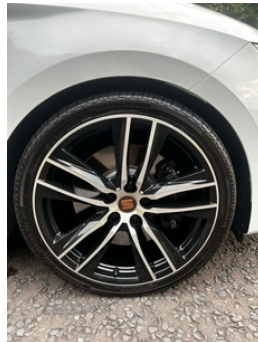


Seat Leon 2.0 TSI 290 Cupra Lux [EZ] 5dr DSG | Aug 2020

£21,000

LOW MILES, SAT NAV



Awesome car with low miles in super condition and rare Luxury model with all important heated seats for this time of year and upgraded sports seating. In addition the car has wireless phone charging located just below the USB ports in centre console. The car has been serviced recently and has had new rear brake pads and discs. Just had front pads and discs, supplied with 2 keys.

Vehicle Features

2 folding remote keys with window open/close function and boot opening/door mirror folding function, 3 point rear seatbelts x3, 4 USB, 8 speakers, 12v power point in centre console, 19" Cupra Machined alloy wheels 30/2, 60/40 split folding rear seat with armrest, ABS, Additional heating and ventilation outlet in rear of centre console, Aluminium pedals, Apple Car Play, Auxiliary input socket, Black front grille, Black interior roof, bluetooth and handsfree, Body colour door handles, Body coloured bumpers, Boot storage net, Cargo rings in boot, CD, Central locking fuel filler cap, Child proof door locks, Convenience pack+ - Leon, covered and illuminated mirror, CUPRA performance interface, curtain, DAB, Dark tinted rear windows, digital clock, Digital cockpit, Driver and front passenger airbags with front passenger airbag de-activation, Driver and passenger seat height adjust,

Miles:	42300
Fuel Type:	Petrol
Transmission:	Semi-Automatic
Colour:	White
Engine Size:	1984
Tax Band:	Petrol/Diesel (£190 p/a)
Body Style:	Hatchback
Insurance group:	32E
Reg:	FA13LUK

Technical Specs

DIMENSIONS	
Length:	4281mm
Width:	1816mm
Height:	1435mm
Seats:	5
Luggage Capacity (Seats Up):	380L
Gross Weight:	1920KG
Max. Loading Weight:	564KG

PERFORMANCE & ECONOMY

Fuel Consum. (Urban Cold):	32.8MPG
Fuel Consum. (Extra Urban):	52.3MPG
Fuel Consum. (Combined):	43.5MPG
Fuel Tank Capacity:	50L
Number Of Gears:	7 SPEED
Top Speed:	155MPH
Acceleration 0-100 km/h:	6s
Engine Power BHP:	285.6BHP

Driver and passenger sun visor, driver knee airbags, Driver seat lumbar adjustment, driver sun visor with card holder, Dual zone climate control, Dust/pollen filter, Dynamic chassis control, EBA, Electrically adjustable and heated door mirrors, Electric folding door mirrors, Electric front/rear windows, Electric handbrake, Electro-mechanical progressive power assisted steering, Electronic parking brake with auto hold, Engine immobiliser, ESC with switch off key, Exclusive Cupra front and rear bumpers, Flat bottomed perforated leather steering wheel with white stitching and CUPRA logo and leather gear knob, Front/rear floor mats, Front and rear black brake calipers with cupra logo, Front and rear head restraints, Front and rear parking sensors, Front assist with pedestrian protection, Front centre armrest with storage compartment, Front cupholders x 2, Front heated bucket seats in microsuede, Front seatbelt pretensioners, Front seatbelt reminder, front side, Full LED headlights with LED day time running lights + LED rear tail lights + LED licence plate lights and LED front and rear fog lights, Full Link Smartphone Integration with Mirror Link, gearshift indicator, Gloss black exterior mirrors with integrated LED indicators, Gloss black front grille frame, Gloss black interior detailing, Google Android Auto with USB cable for Apple and Android compatibility, Height/reach adjust steering wheel, Height adjustable front and rear headrests and third rear headrest, High centre console with integrated box & cup holder, High gloss black finish B and C pillars, high resolution colour driver display, Hill hold control, Illuminated aluminium front door sill with CUPRA logo, instrument light brightness, Interior copper and black detailing, ISOFIX points in outer rear seats with top tether anchorage points, Keyless entry and go with wireless phone charger, lights on reminder, Locking wheel bolts, Lowered sports suspension, low fuel warning light, Luggage tie-down hooks, Media system plus with 8" display, Multi-Collision braking, Multi-colour ambient interior lighting, Navigation system 3D map display, outside temp gauge, rear air outlet, Rear wash/wipe, Remote central locking + deadlocks, RPM, Safety pack - Leon, SEAT drive profile CUPRA with 4 mode (Cupra/Normal/Sport/Individual), SEAT logo boot release, SEAT USB media cable, Service interval indicator, sound actuator and gearshift, Space saver spare wheel, Steering wheel gearshift paddles, steering wheel mounted audio and phone control, Storage box under drivers and passenger seat, throttle response, traction control system and front differential lock system, trip computer, two SD card slots, Tyre pressure monitoring system, Visible dual exhaust pipes, voice control, Volumetric alarm with back up horn, with armrest in front seats