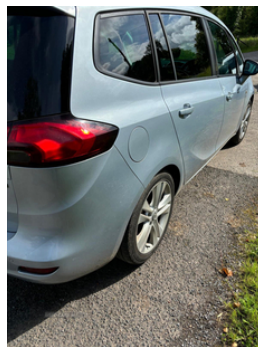


Vauxhall Zafira 2.0 CDTi [165] SRi 5dr [non Start Stop] | Mar 2014

£2,895



March 14
Vauxhall
Zafira 2.0 Cdti Sri
162BHP
Mot 5/12/24
Warranted miles
7 Seater
DMB digital radio
Parking distance sensors front and rear
Daytime running lights
Electric windows
Front fog lights
Test drive welcome
Other cars in stock
keen rates on euro

07775598318 NI
00447775598318 ROI

Vehicle Features

2 individual fold flat 3rd row seats, 3 individual folding 2nd row seats, 3 point seatbelts on all seats, 3 spoke flat bottomed leather steering wheel, 3rd row storage with cup holders, 12V

Fuel Type:	Diesel
Transmission:	Manual
Colour:	Silver
Engine Size:	1956
CO2 Emission:	139
Tax Band:	E (£190 p/a)
Body Style:	MPV
Insurance group:	19E
Reg:	YFZ2280

Technical Specs

DIMENSIONS	
Length:	4658mm
Width:	1884mm
Height:	Not Availablemm
Seats:	7
Luggage Capacity (Seats Up):	152L
Gross Weight:	2430KG

PERFORMANCE & ECONOMY	
Fuel Consum. (Urban Cold):	43.5MPG
Fuel Consum. (Extra Urban):	62.8MPG
Fuel Consum. (Combined):	53.3MPG
Fuel Tank Capacity:	58L
Number Of Gears:	6 SPEED
Top Speed:	129MPH
Engine Power BHP:	162.3BHP

power points in front + rear centre consoles, ABS, Active front headrests, Air recirculation system, Ambient interior lighting, audio, Black finish on door pillars, Body colour door handles, Body colour door mirrors, Body coloured bumpers, Carpeted loadspace, Carpeted passenger compartment, CBC - (Cornering brake control), Centre console with storage/cupholders, Chrome grille surround, Chrome interior door handles, Cruise control, Dark tinted rear glass, date, Daytime running lights, Display panel showing time, DMB digital radio, Driver/Front Passenger airbags, Driver/passenger sunvisors and illuminated vanity mirrors, Drivers lower fascia storage, Electrically adjustable and heated door mirrors, Electric front windows/one touch facility, Electric rear windows, Electronic brake force distribution, Emergency brake assist, Engine immobiliser, ESP plus + traction control, Fade up/down courtesy light, Front centre armrest, Front door storage bin, Front fog lights, Front map reading lights, Front passenger airbag deactivation, Front seat backrest storage nets, Front seat side impact airbags, Full size curtain airbags, Green tinted glass, Headlamp levelling, Heated rear window with auto timer, Height adjustable driver's seat, Height adjustable front/rear head restraints, Height adjustable front seatbelts, Illuminated glovebox, Instrument panel light dimmer, Intermittent rear wash/wipe, Isofix system on outer rear seats, Key left in ignition audible warning, Lights on warning, Load restraint lashing eyes, Locking wheel nuts, Lowered and uprated sports suspension, Low fuel warning light, Multi function trip computer, outside temp, Parking distance sensors front and rear, PAS, Pollen filter, Reach + rake adjustable steering column, Reading lights, Rear roof spoiler, Remote central deadlocking, Remote ultrasonic alarm system, Retractable load area cover, Rev counter, Seat comfort pack 1 - Zafira Tourer, Security code/remote display protection for audio, Service interval indicator, Sports chassis, Sports pedals, Steering wheel mounted audio controls, Translucent instrument dials with chrome edging, Twin jet windscreen washer nozzles, USB connection, Variable intermittent front wash/wipe