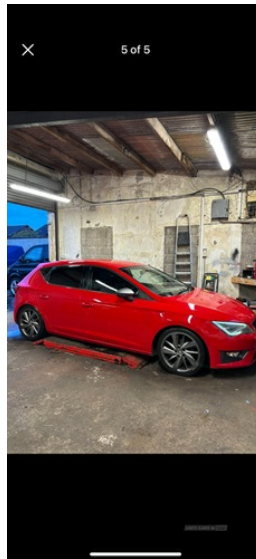


Seat Leon 1.4 TSI FR 5dr [Technology Pack] | Jul 2013

£4,495 O.N.O

1. 4 FR TSI SEAT LEON (TECH PACK)



2013 1.4 Tsi fr 137bhp
 117k miles
 Technology pack
 Beautiful red
 Good spec, sat nav, parking sensors, good sound system etc etc
 Multiple modes, sport, eco individual etc
 Bigger screen
 Car wants for nothing drives 100 percent
 Cheap tax
 Had timing belt and more just before 100k receipts for proof
 Well maintained car mechanically and well looked after
 Hard to get one of these in a 1.4 petrol fr

Miles:	117000
Fuel Type:	Petrol
Transmission:	Manual
Colour:	Red
Engine Size:	1395
CO2 Emission:	119
Tax Band:	C (£35 p/a)
Body Style:	Hatchback
Reg:	Mg10jck

Technical Specs

DIMENSIONS

Length:	4271mm
Width:	1816mm
Height:	1444mm
Seats:	5
Luggage Capacity (Seats Up):	380L
Gross Weight:	1750KG
Max. Loading Weight:	594KG

PERFORMANCE & ECONOMY

Fuel Consum. (Urban Cold):	44.1MPG
Fuel Consum. (Extra Urban):	62.8MPG
Fuel Consum. (Combined):	54.3MPG
Fuel Tank Capacity:	50L
Number Of Gears:	6 SPEED
Top Speed:	131MPH
Acceleration 0-100 km/h:	8.2s
Engine Power BHP:	138.1BHP

Car is based in ballymena

The only bad points to this car is the wheels are kirbed, can be refurbished or a new set, and there are 2 small cracks on passenger side of the windscreen never bothered me and passes mot

Finance can be arranged if needed

For anymore information get in contact

Vehicle Features

'Lights On' warning buzzer, 3 height adjustable rear headrests, 3 point rear seatbelts x3, 12v power point in centre console, ABS + traction control, Active front headrests, Active head restraints, Additional heating and ventilation outlet in rear of centre console, Aluminium front door sills, Ambient lighting, Auxiliary input socket, Bluetooth audio streaming, Bluetooth handsfree phone connection with steering wheel mounted controls, Body colour door handles, Body coloured bumpers, Boot storage net, Child proof door locks, Chromed centre radiator grille surround, Chrome interior trim, Coming home headlight function, Cornering front fog lights, Cruise control, Curtain airbags, DAB Digital radio, Dark tinted rear windows, Digital clock and outside temperature display, Driver/Front Passenger airbags, Driver/passenger sunvisors with illuminated vanity mirrors, Driver seat height/lumbar adjust, Drivers knee airbag, Drivers seatbelt reminder, Dual zone climate control, Dust/pollen filter, Electric adjustable/heated/folding door mirrors, Electric front/rear windows with one touch/anti pinch, Electric headlamp adjustment, Engine immobiliser, ESP+EBA, Exclusive FR front and rear bumpers, Footwell illumination, Front/rear floor mats, Front adjustable head restraints, Front and rear parking sensors, Front armrest with storage box, Front cupholders x 2, Front map reading lights, Front seatback pockets, Front seatbelt pretensioners, Front side airbags, Front sports seats, Height/reach adjust steering wheel, Hill hold control, Illuminated boot, Illuminated glovebox, Leather handbrake, LED headlights + adaptive front lighting system + daytime running lights + LED tail lights, LED indicators in door mirrors, Locking wheel bolts, Low fuel warning light, Luggage tie-down hooks, Multi function display, Passenger airbag deactivation system, Passenger seat height adjuster, Passenger seat lumbar adjust, Perforated leather steering wheel with red stitching + gear knob, Radio/CD + MP3, Rear reading lights, Rear top tether child seat ISOFIX attachment, Rear wash/wipe, Remote central locking + deadlocks, Remote fuel flap release, Reverse activated kerb-view adjustment on passenger's door mirror, SD card slot, SEAT

Drive profile, SEAT logo boot release, Seat navigation pack - Leon FR/Cupra, Second remote key, Service interval indicator, Speed sensitive power steering, Split folding rear seat, Sports suspension, Steering wheel mounted audio/phone controls, Storage boxes under front seats, Tinted windows, Touch screen display, Trip computer, Twin chromed exhaust pipes, Tyre pressure monitoring system, USB port, Volumetric alarm with back up horn, XDS electronic differential lock