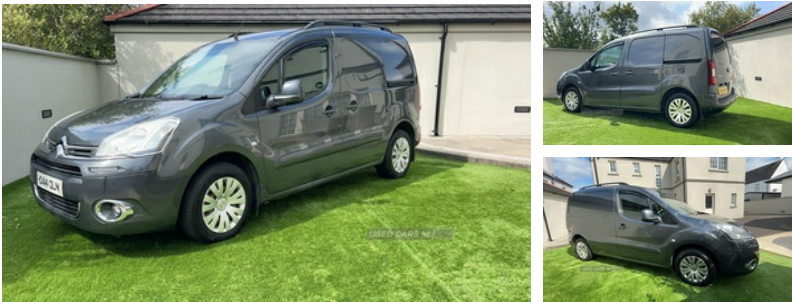


Citroen Berlingo 1.6 HDi 625Kg Enterprise 75ps | May 2014

£3,750 O.N.O

NO VAT



2014 Citroen Berlingo 625 Enterprise
Metallic Grey
160k miles
x2 keys

Full test from 29/7/24 to 5/8/25

No advisories

Have owned van for 4 years

Serviced every 10k miles

Timing belt and water pump done at 120k miles

Recently had new pads, disc, front shocks and springs

Ply lined and carpeted in rear with rubber flooring and spot lights

Wind deflectors

Roof bars

Also comes with

Seat covers

Spare wheel trims

Rhino roof rack

Larger van purchased

£3750 ono

Vehicle Features

2 speed intermittent front wipers, 12V socket on central dashboard console, 15" steel wheels, ABS, Air conditioning, Bluetooth with USB box, Cigar lighter, Cloth upholstery, Drivers airbag, Dual passenger bench seat, Full size spare wheel, Height

| | |
|----------------------|--------------------------------|
| Miles: | 160000 |
| Fuel Type: | Diesel |
| Transmission: | MANUAL |
| Colour: | Grey |
| Engine Size: | 1560 |
| CO2 Emission: | 133 |
| Tax Band: | Light goods vehicle (£335 p/a) |
| Body Style: | Van |
| Reg: | DA140LN |

Technical Specs

| DIMENSIONS | |
|-------------------------------------|----------------|
| Length: | 4380mm |
| Width: | 1810mm |
| Height: | 1843mm |
| Seats: | 3 |
| Luggage Capacity (Seats Up): | Not AvailableL |
| Gross Weight: | 1945KG |

| PERFORMANCE & ECONOMY | |
|------------------------------------|---------|
| Fuel Consum. (Urban Cold): | 47.9MPG |
| Fuel Consum. (Extra Urban): | 60.1MPG |
| Fuel Consum. (Combined): | 55.4MPG |
| Fuel Tank Capacity: | 60L |
| Number Of Gears: | 5 SPEED |
| Top Speed: | 92MPH |
| Engine Power BHP: | 73.8BHP |

adjustable drivers seat, PAS, Radio/CD and mp3 player, Reach + rake adjustable steering column, Rear parking sensor, Removable PVC load floor mat, Satellite navigation system, Sliding side load door nearside, Slim side rubbing strips, Super Plus pack - Berlingo, Trip computer, Tyre pressure monitor