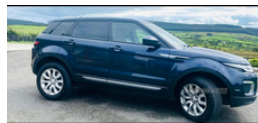


## Land Rover Range Rover Evoque 2.0 TD4 SE 5dr | Jan 2017

# £7,500 O.N.O

**NEW TIMING CHAIN FITTING IN JANUARY 24**



2017 range rover evoque moted last month genuine range rover towbar fitted and 4 wheel drive model has just been serviced leather interior heated seats.

### Vehicle Features

3 rear 3 point seatbelts, 12V power point in luggage area, 60/40 split folding rear seat, ABS/EBD, Air quality sensor, Alarm, Auto climate control with air filtration, Auto dimming rear view mirror, Automatic headlamp activation, Auxiliary Audio Jack, Bluetooth telephone connectivity, Body colour door handles, Body coloured bumpers, Brunel grille surround and fender vents, Brunel tailgate finish, Carpet mats, Centre console storage with lid, Cruise control, DAB Digital radio, Diesel particulate filter, Driver/passenger sunvisors and illuminated vanity mirrors, Driver and passenger airbags, Drivers knee airbag, DSC - Dynamic Stability Control, EBA, Electronic parking brake, Electronic traction control, Engine badge deletion, EPAS, Footwell illumination, Front centre armrest with 2 cupholders, Front head restraints, Front map lights, Front seatbelt pretensioners with force limiters, Front side airbags with curtain airbags, Grained Leather upholstery, Heated rear windscreen, Height/reach adjustable steering column, Height adjustable front seatbelts, Hill descent control, Hill start assist, Illuminated glovebox, Immobiliser, InControl protect, Interior mood lighting, Isofix child seat preparation, Lashing points, Leather gear knob,

|                         |                       |
|-------------------------|-----------------------|
| <b>Miles:</b>           | 118467                |
| <b>Fuel Type:</b>       | Diesel                |
| <b>Transmission:</b>    | Manual                |
| <b>Colour:</b>          | Blue                  |
| <b>Engine Size:</b>     | 1999                  |
| <b>CO2 Emission:</b>    | 125                   |
| <b>Tax Band:</b>        | D (£160 p/a)          |
| <b>Body Style:</b>      | Sport utility vehicle |
| <b>Insurance group:</b> | 33E                   |
| <b>Reg:</b>             | Vn66vrr               |

### Technical Specs

#### DIMENSIONS

|                                     |        |
|-------------------------------------|--------|
| <b>Length:</b>                      | 4370mm |
| <b>Width:</b>                       | 1900mm |
| <b>Height:</b>                      | 1635mm |
| <b>Seats:</b>                       | 5      |
| <b>Luggage Capacity (Seats Up):</b> | 575L   |

#### PERFORMANCE & ECONOMY

|                                    |         |
|------------------------------------|---------|
| <b>Fuel Consum. (Urban Cold):</b>  | 51.4MPG |
| <b>Fuel Consum. (Extra Urban):</b> | 65.7MPG |
| <b>Fuel Consum. (Combined):</b>    | 58.9MPG |
| <b>Fuel Tank Capacity:</b>         | 54L     |
| <b>Number Of Gears:</b>            | 6 SPEED |
| <b>Top Speed:</b>                  | 124MPH  |
| <b>Acceleration 0-100 km/h:</b>    | 10s     |
| <b>Engine Power BHP:</b>           | 177BHP  |

Leather steering wheel, Locking wheel nuts, Luggage compartment lighting, Luggage cover, Parking distance sensors front and rear, Power front/rear windows with global close, Rain sensor windscreen wipers, Rear air con vents, Rear centre head restraint, Rear headrests, Rear seat centre armrest, Rear wiper, Remote central locking, Roll stability control, Seatbelt warning, Service interval indicator, Steering wheel mounted audio/cruise controls, Terrain Response, Trailer stability assist, Trip computer, Tyre pressure monitoring system, USB connection, Voice control system