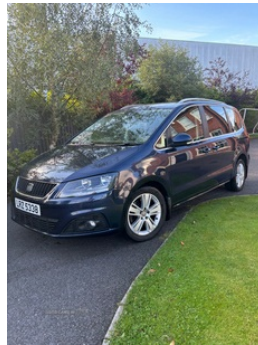


16 Springhill Meadows, Ballyclare, BT39 9LD
07813252117

Seat Alhambra 2.0 TDI CR Ecomotive SE 5dr | Mar 2013

LEATHER SEATS, 5 FULL ISOFIX SEATS, FULL YEAR MOT.

£5,900 O.N.O



Seat Alhambra Ecomotive 2013,
6 gear manual,
7 seats full leather 5 with isofix,
parking sensors,
reversing camera,
tow bar,
new tyres,
full service history,
MOT full year till September 2025,
recently serviced,
lady owner,
clean car inside and out great condition.

Vehicle Features

'Guide me home' headlamps, 3 point seatbelts on all seats, 3 spoke leather steering wheel, 3 x 12V power sockets, 3 zone climate control, 4 cupholders, 4 Lashing eyes in boot, 8 speakers, 230V AC inverter, ABS, Adjustable front armrest with storage compartment, Adjustable head restraints, Auto dimming rear view mirror, Auto hold function, Automatic lights on sensor, Automatic rain sensing wipers, Bluetooth hands free telephone connection, Body colour bumpers, Body colour door handles,

Miles:	118000
Fuel Type:	Diesel
Transmission:	Manual
Colour:	Blue
Engine Size:	1968
CO2 Emission:	146
Tax Band:	F (£210 p/a)
Body Style:	MPV
Reg:	LRZ5338

Technical Specs

DIMENSIONS

Length:	4854mm
Width:	1904mm
Height:	1720mm
Seats:	7

Luggage Capacity (Seats Up): 267L

Gross Weight:	2510KG
Max. Loading Weight:	763KG

PERFORMANCE & ECONOMY

Fuel Consum. (Urban Cold): 40.9MPG

Fuel Consum. (Extra Urban): 57.6MPG

Fuel Consum. (Combined): 50.4MPG

Fuel Tank Capacity: 70L

Number Of Gears: 6 SPEED

Top Speed: 120MPH

Acceleration 0-100 km/h: 10.9s

Engine Power BHP: 138.1BHP

USED CARS NI

Body colour door mirrors with integral indicators, Chromed centre radiator grille surround, Chrome effect dashboard facia, Chrome roof rails, Chrome side window trim, Cornering front fog lights, Cruise control, Curtain airbags, Dark tinted rear glass, Dashboard storage with cover, Diesel particulate filter, Driver's electric adjustable lumbar support, Driver alert system, Driver and passenger airbags, Drivers knee airbag, Easy entry seats, Elec heated + adjust door mirrors, Electrically operated child locks on rear doors, Electric folding door mirrors with puddle lamps, Electric headlight adjustment, Electric speed sensitive power steering, Electronic engine immobiliser, ESP+EBA, Folding rear seats, Front/rear door stowage bins, Front/rear floor mats, Front/rear reading lights, Front and rear electric windows, Front and rear parking sensors, Front and rear seatbelt reminder, Front seat back fold out tables with cupholders, Front seatback pockets, Front seats folding into table, Front side airbags, Height/reach adjust steering wheel, Height adjustable front seatbelts with pre-tensioners and load limiters, Integrated sunblind for rear side windows, Isofix child seat preparation, Leather gear knob, Lockable/illuminated air conditioned glovebox, Locking wheel bolts, MDI with USB/iPod connection cables, Multi function display, Multi function steering wheel, Outside temperature gauge, Overhead console with sunglasses holder, Passenger airbag deactivate switch, Passenger seat height adjuster, Passenger seat lumbar adjust, Rear air conditioning with separate controls, Rear wiper, Reclining 2nd row seats, Remote central locking + deadlocks, Removable load compartment cover, Reverse activated kerb-view adjustment on passenger's door mirror, Stop/start system, Storage bins under drivers seat, Storage under front passenger seat, Sunvisors with illuminated vanity mirrors, Trip computer, Tyre pressure monitoring system, Under floor storage in 2nd row, Voice control system, Volcano grey door & dashboard decorative inserts, Volumetric alarm with back up horn