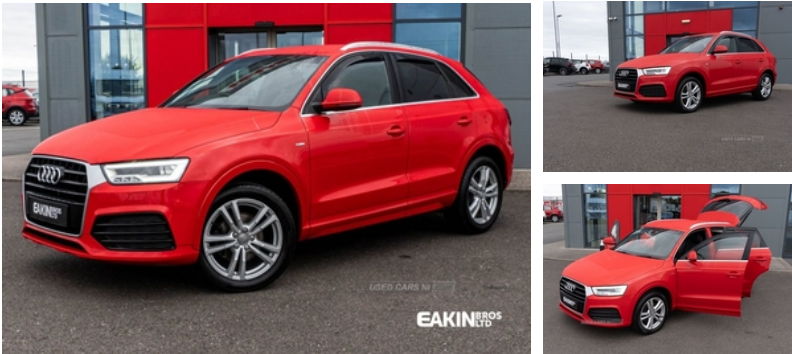


**Audi Q3 2.0 TDI S Line 5dr | Jun 2015**

**£11,490**



<b>Miles:</b>	78125
<b>Fuel Type:</b>	Diesel
<b>Transmission:</b>	Manual
<b>Colour:</b>	Red
<b>Engine Size:</b>	1968
<b>Body Style:</b>	Sport utility vehicle
<b>Insurance group:</b>	21E
<b>Reg:</b>	S70TSW

**Vehicle Features**

3 spoke multi-function Q design steering wheel, 3x3 point rear seatbelts, 6.5" colour display screen, 12V socket in rear centre console, ABS+Electronic Brake force Distribution, Acoustic windscreen, Aluminium door sill trims, Aluminium window surround, Anti-lock Braking System+Electronic Brake Force Distribution, Audi drive select, Audi music interface, Black cloth headlining, Body colour door mirrors, Body coloured bumpers, Chrome exhaust tailpipe, Chrome fog light surround, Chrome grille, Coming home function, Curtain airbags, DAB digital radio module, Diesel particulate filter, Door mirror integrated indicators, Driver and passenger airbags, Driver and passenger side airbags, Dual zone climate control, EDL + ASR, Electrically operated child locks on rear doors, Electric front lumbar adjustment, Electromechanical parking brake, ESP, First aid kit, Front and rear electric windows, Front and rear headrests, Front and rear velour floor mats, Front centre armrest with storage compartment and angle adjustment, Front fog lights, Front passenger airbag deactivation, Heated windscreen washer jets, Height/reach adjust steering wheel, Height adjustable front seats, ISOFIX on front passenger and rear outer seats, Jack and tool kit, LED daytime running lights, LED headlights with headlight washers, Light and rain sensor for auto activation of lights and windscreen wipers, Loading sill protector in stainless steel, Locking wheel bolts, Low washer fluid indicator, Matt brushed aluminium fascia and door trim inlays, MMI - Multi Media Interface control system, On board computer, PAS, Perforated leather gearknob, Power Assisted Steering, Rear wiper, Remote central locking, Remote electric boot opening/closing, Retractable luggage cover, Seatbelt warning light, Service interval indicator, S Line body styling, Split fold rear seat, Sunband for windscreen, Thatcham category 1 alarm +

**Technical Specs**

<b>DIMENSIONS</b>	
<b>Length:</b>	4388mm
<b>Width:</b>	1831mm
<b>Height:</b>	Not Availablemm
<b>Seats:</b>	5
<b>Luggage Capacity (Seats Up):</b>	420L
<b>Gross Weight:</b>	2085KG
<b>Max. Loading Weight:</b>	600KG
<b>PERFORMANCE &amp; ECONOMY</b>	
<b>Fuel Consum. (Urban Cold):</b>	52.3MPG
<b>Fuel Consum. (Extra Urban):</b>	67.3MPG
<b>Fuel Consum. (Combined):</b>	60.1MPG
<b>Fuel Tank Capacity:</b>	64L
<b>Number Of Gears:</b>	6 SPEED
<b>Top Speed:</b>	126MPH
<b>Acceleration 0-100 km/h:</b>	9.6s
<b>Engine Power BHP:</b>	147.5BHP



immobiliser, Towbar preparation, Tyre pressure monitoring system, Under floor storage in luggage area, Voice control system, Warning triangle