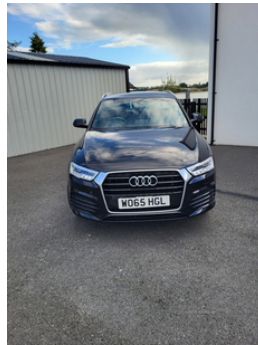


33 derrycarne road, Portadown, BT62 1PT
07745713506

Audi Q3 2.0 TDI S Line 5dr | Feb 2016 SAT NAV, 12 MONTHS MOT

£9,250 O.N.O



immaculate car inside and out, no marks, dents or rust
2 central locking keys
tax £35pa water pump and timing belt changed at 87k

Vehicle Features

3 spoke multi-function Q design steering wheel, 3x3 point rear seatbelts, 6.5" colour display screen, 12V socket in rear centre console, ABS+Electronic Brake force Distribution, Acoustic windscreen, Aluminium door sill trims, Aluminium window surround, Audi drive select, Audi music interface, Black cloth headlining, Body colour door mirrors, Body coloured bumpers, Chrome exhaust tailpipe, Chrome fog light surround, Chrome grille, Coming home function, Curtain airbags, DAB digital radio module, Diesel particulate filter, Door mirror integrated indicators, Driver and passenger airbags, Driver and passenger side airbags, Dual zone climate control, EDL + ASR, Electrically operated child locks on rear doors, Electric front lumbar adjustment, Electromechanical parking brake, ESP, First aid kit, Front and rear electric windows, Front and rear headrests, Front and rear velour floor mats, Front centre armrest with storage compartment and angle adjustment, Front fog lights, Front passenger airbag deactivation, Front sports seats, Heated windscreen washer jets, Height/reach adjust steering wheel, ISOFIX on front passenger and rear outer seats, Jack and tool kit, LED daytime running lights, LED headlights with headlight washers, Light and rain sensor for auto activation of lights and windscreen wipers, Loading sill protector in stainless steel,

Miles:	99850
Fuel Type:	Diesel
Transmission:	Manual
Colour:	Black
Engine Size:	1968
CO2 Emission:	119
Tax Band:	C (£35 p/a)
Body Style:	Sport utility vehicle
Insurance group:	21E
Reg:	wo65hgl

Technical Specs

DIMENSIONS

Length:	4388mm
Width:	1831mm
Height:	Not Availablemm
Seats:	5
Luggage Capacity (Seats Up):	420L
Gross Weight:	2085KG
Max. Loading Weight:	600KG

PERFORMANCE & ECONOMY

Fuel Consum. (Urban Cold):	55.4MPG
Fuel Consum. (Extra Urban):	67.3MPG
Fuel Consum. (Combined):	61.4MPG
Fuel Tank Capacity:	64L
Number Of Gears:	6 SPEED
Top Speed:	126MPH
Acceleration 0-100 km/h:	9.6s
Engine Power BHP:	147.5BHP



Locking wheel bolts, Low washer fluid indicator, Matt brushed aluminium fascia and door trim inlays, MMI - Multi Media Interface control system, On board computer, PAS, Rear wiper, Remote central locking, Remote electric boot opening/closing, Retractable luggage cover, Seatbelt warning light, Service interval indicator, S Line body styling, Split fold rear seat, Sunband for windscreen, Thatcham category 1 alarm + immobiliser, Towbar preparation, Tyre pressure monitoring system, Under floor storage in luggage area, Voice control system, Warning triangle