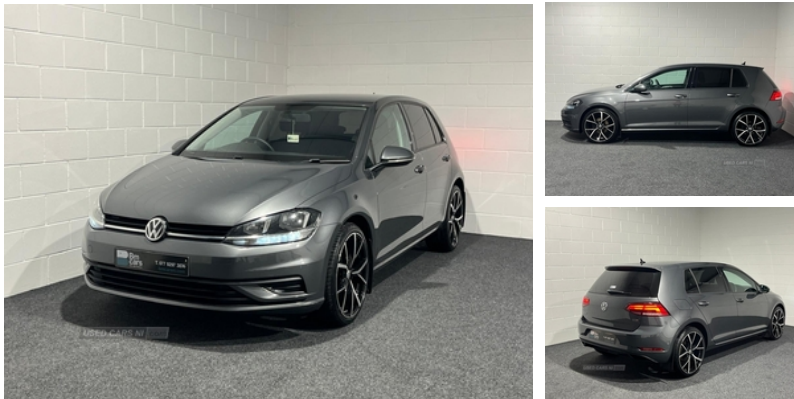


## Volkswagen Golf 1.6 TDI S 5dr | Sep 2017

# £8,995



Alloys optional extra

Indoor After Hours Viewing Available

Part Ex And Finance Available

Sold With 6-months warranty and Optional Extended

### Vehicle Features

'Lights On' warning buzzer, 3 point height adj front seatbelts + pretensioners, 3 rear 3 point seatbelts, 3 rear headrests, 3 spoke steering wheel, 8" touch screen, 60/40 split folding rear seat, ABS, Automatic post collision braking, aux-in, Bag hook in luggage compartment, Bella cloth upholstery, Black front air intake and radiator grilles, Black rear diffuser, Bluetooth hands free telephone connection, Body colour bumpers, Body colour door handles, Body colour door mirrors, Boot lashing points, Brake pad wear indicator warning light, CD/MP3/WMA, Child locks on rear doors, Composition media system, Cooled glovebox, Courtesy light delay, Cover for storage compartment in centre, DAB Digital radio, Diesel particulate filter, Driver/Front Passenger airbags, Driver/Passenger whiplash optimised head restraints, Driver alert system, Drivers knee airbag, Dust/pollen filter, Electrically adjustable and heated door mirrors, Electric front windows, Electric rear windows, Electronic engine immobiliser, Electronic parking brake with auto hold, ESP with EDL + ASR, Exterior temperature gauge, Front and rear curtain airbags, Front assistant collision mitigation, Front centre armrest with storage box and rear air vents, Front passenger airbag deactivation, Front passenger seat height adjust, Front reading lights, Front side airbags, Grab handles, Heated rear windscreen, Height/reach adjust steering wheel, height adjustable and

**Miles:** 91000

**Fuel Type:** Diesel

**Transmission:** Manual

**Colour:** Grey

**Engine Size:** 1598

**CO2 Emission:** 106

**Tax Band:**  
 Petrol/Diesel (£190 p/a)

**Body Style:** Hatchback

**Insurance group:** 15E

**Reg:** FE67XWL

### Technical Specs

#### DIMENSIONS

**Length:** 4258mm

**Width:** 1799mm

**Height:** 1492mm

**Seats:** 5

**Luggage Capacity (Seats Up):** 380L

**Gross Weight:** 1800KG

**Max. Loading Weight:** 574KG

#### PERFORMANCE & ECONOMY

**Fuel Consum. (Urban Cold):** 61.4MPG

**Fuel Consum. (Extra Urban):** 74.3MPG

**Fuel Consum. (Combined):** 68.9MPG

**Fuel Tank Capacity:** 50L

**Number Of Gears:** 5 SPEED

**Top Speed:** 123MPH

**Acceleration 0-100 km/h:** 10.2s

**Engine Power BHP:** 114BHP

---

removable, Height adjustable driver's seat, Illuminated vanity mirrors, Instrument cluster in white, Isofix preparation for 2 rear child seats, LED daytime running lights, LED rear lights, Luggage compartment cover, Luggage compartment lighting, Multifunction computer, PAS - speed related, Pearl grey headlining, Polar night black centre console, Rear roof spoiler, Rear windscreen washer and wiper with interval delay, Remote central locking with 2 remote folding keys, Rev counter, Spotpoint decorative inserts, Steel space saver spare wheel, Storage compartments in doors, Sun visors, Trip and service interval display, Tyre pressure monitor, USB and SD card reader, Variable boot floor, Warning buzzer and light for front seatbelts unfastened, XDS electronic differential lock