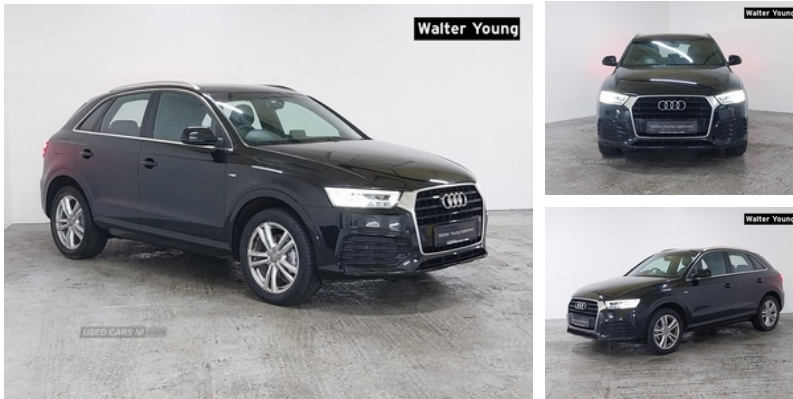


Audi Q3 1.4T FSI S Line Navigation 5dr | 2017

£13,495



This stunning Audi Q3 S-Line Navigation has just arrived here at Walter Young Broughshane. This model is finished in the stunning Brilliant Black which gives it a dominant presence on the road, the 1.4 petrol engine provides seamless power and response but maintains a smooth comfortable drive. The fit and finish is exceptional being the rarer S-Line Navigation model comes with features such as full heated leather seats, S Line body styling, Light and rain sensor for auto activation of lights and windscreen wipers, Dual zone climate control, Front sports seats, Remote central locking and so much more. Comes fully serviced, only 74k miles, MOT till April 2025 and backed up with our hand selected warranty partner will give you complete piece of mind that this is the right purchase for you. Here at Walter Young we ensure every vehicle receives the best care possible, all our the vehicles have been hand selected for there service history and quality throughout, prepared by one of our highly experienced mechanics to the highest of standards from thorough computer diagnostics to the finest oils available. Our commitment extends to vehicle owners as well, providing stellar service and advice, clear costings, and flexible payment options to suit all of your needs. If you would like to book a test drive or reserve this vehicle please visit our website or contact us on 02825861380 for an opportunity to drive away in this gorgeous Audi Q3 S-Line

Vehicle Features

3x3 point rear seatbelts, 6.5" colour display screen, 12V socket in rear centre console, ABS+Electronic Brake force Distribution, Acoustic windscreen, Aluminium door sill trims, Aluminium window surround, Audi drive select, Audi music interface, Black cloth headlining, Body colour door mirrors, Body coloured bumpers, Chrome exhaust tailpipe, Chrome fog light surround,

Miles:	74856
Fuel Type:	Petrol
Transmission:	Manual
Colour:	Black
Engine Size:	1400
CO2 Emission:	131
Tax Band:	E (£190 p/a)
Body Style:	Sport utility vehicle
Insurance group:	21E
Reg:	EN66FXB

Technical Specs

DIMENSIONS

Length:	4388mm
Width:	1831mm
Height:	Not Availablemm
Seats:	5
Luggage Capacity (Seats Up):	420L
Gross Weight:	1985KG
Max. Loading Weight:	600KG

PERFORMANCE & ECONOMY

Fuel Consum. (Urban Cold):	42.2MPG
Fuel Consum. (Extra Urban):	55.4MPG
Fuel Consum. (Combined):	49.6MPG
Fuel Tank Capacity:	64L
Number Of Gears:	6 SPEED
Top Speed:	126MPH
Acceleration 0-100 km/h:	9.2s
Engine Power BHP:	147.5BHP



Chrome grille, Coming home function, Curtain airbags, DAB digital radio module, Door mirror integrated indicators, Driver and passenger airbags, Driver and passenger side airbags, Dual zone climate control, EDL + ASR, Electrically operated child locks on rear doors, Electric front lumbar adjustment, Electromechanical parking brake, ESP, First aid kit, Front and rear electric windows, Front and rear headrests, Front and rear velour floor mats, Front centre armrest with storage compartment and angle adjustment, Front fog lights, Front passenger airbag deactivation, Front sports seats, Heated windscreen washer jets, Height/reach adjust steering wheel, ISOFIX on front passenger and rear outer seats, Jack and tool kit, LED daytime running lights, LED headlights with headlight washers, LED rear lights, Light and rain sensor for auto activation of lights and windscreen wipers, Loading sill protector in stainless steel, Locking wheel bolts, Low washer fluid indicator, Matt brushed aluminium fascia and door trim inlays, MMI - Multi Media Interface control system, On board computer, PAS, Rear wiper, Remote central locking, Remote electric boot opening/closing, Retractable luggage cover, Seatbelt warning light, Service interval indicator, S Line body styling, Split fold rear seat, Sunband for windscreen, Thatcham category 1 alarm + immobiliser, Towbar preparation, Tyre pressure monitoring system, Under floor storage in luggage area, Voice control system, Warning triangle