

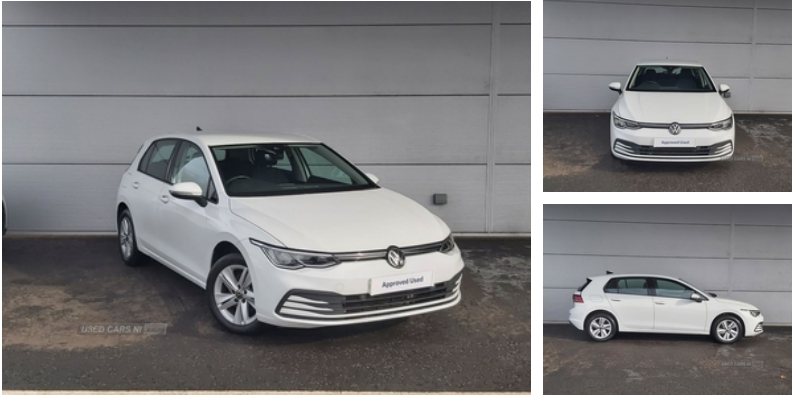


Phillips (Lisburn) Ltd

58 Saintfield Road, Lisburn Co Antrim, BT27 5BE  
Sales: 02892 664354

## Volkswagen Golf 1.0 TSI Life 5dr | 2021 2 YEAR WARRANTY & BREAKDOWN

# £15,995



<b>Miles:</b>	34866
<b>Fuel Type:</b>	Petrol
<b>Transmission:</b>	Manual
<b>Colour:</b>	Pure White
<b>Engine Size:</b>	999
<b>Tax Band:</b>	Petrol/Diesel (£190 p/a)
<b>Body Style:</b>	Hatchback
<b>Insurance group:</b>	14E
<b>Reg:</b>	YR71KNY

### Vehicle Features

2Zone Climate Control, 3 point height adj front seatbelts + pretensioners, 3 rear head restraints, 3 rear three point seatbelts, 10 colour interior ambient lighting, 12V socket in front centre console, 12V socket in luggage compartment, 16 Alloy Wheels, ABS, Adaptive Cruise Control, Adaptive cruise control ACC with speed limiter and front assist (reacting to vehicles, Air Conditioning, Alarm with interior protection and deactivation via infotainment system, Ambient lighting, App Connect (Apple Carplay / Android Auto), Auto dimming rear view mirror, Automatic headlamp activation with Coming home and Leaving home feature, Automatic Headlights (Dusk Sensor), Automatic Wipers (Rain Sensor), Bluetooth Phone Connection, Body colour bumpers, Body colour door handles, Body colour door mirrors with integrated indicators, Body colour rear roof spoiler, Car2X communication, Centre console, Colour Touch Screen Radio, Digital cockpit pro - 10.25" high resolution TFT dash display screen with customizable menus and information, Digital Dash, Driver alert system, Driver and front passenger airbag with front passenger airbag deactivation, Drivers and front passengers safety optimised head restraints, Drivers and front passengers sun visors with vanity mirrors, Dynamic road sign display, eCall - Emergency call service for SOS calls to emergency response, Electrically Adjustable Mirrors, Electrically heated and adjustable door mirrors with memory feature, Electric Windows, Electronic engine immobiliser, electronic odometer, Electronic parking brake with auto hold, ESC (Electronic Stability Control), Extended pedestrian protection measures, exterior illuminated styling elements at the sides, exterior temperature and fuel gauge,

### Technical Specs

<b>DIMENSIONS</b>	
<b>Length:</b>	4284mm
<b>Width:</b>	1789mm
<b>Height:</b>	1491mm
<b>Seats:</b>	5
<b>Luggage Capacity (Seats Up):</b>	380L
<b>Gross Weight:</b>	1770KG
<b>Max. Loading Weight:</b>	581KG
<b>PERFORMANCE &amp; ECONOMY</b>	
<b>Fuel Consum. (Combined):</b>	52.3MPG
<b>Fuel Tank Capacity:</b>	45L
<b>Number Of Gears:</b>	6 SPEED
<b>Top Speed:</b>	126MPH
<b>Acceleration 0-100 km/h:</b>	10.2s
<b>Engine Power BHP:</b>	108.6BHP



Used Cars NI can take no responsibility for any errors which may appear in listings. Please confirm details with the seller when making an enquiry.

Front and rear electric windows, Front and rear passengers curtain airbag system including front side airbags, Front centre armrest with storage compartment, Front cupholders x 2, Front disc brakes, Front passenger seat lumbar adjustment, Front reading lights x 2 incorporating LED technology, Glovebox, Heated rear windscreen, Heat insulating glass windscreen, Height adjustable passenger seat, Height and reach adjustable steering wheel, High level 3rd brake light, Highway light, Isofix child seat preparation for 2 rear child seats and front passenger seat, Keyless Start, Lane assist, LED Headlights, LED License plate illumination, Luggage compartment lighting, Maze cloth upholstery, Mobile phone interface with wireless inductive charging function, Multi-function Steering Wheel, Nature cross brushed decorative inserts, Parking Sensors (Front and Rear), pedestrians and cyclists), Petrol Particulate Filter, Power assisted speed sensitive steering, Premium USB cable in choice of either Apple or Android smartphone compatibility, Rain sensor, Rear disc brakes, Rear fog light on one side and reversing lights on both sides, Rear lights incorporating LED technology, Rear windscreen washer and wiper with interval delay, Remote Central Locking, Removable luggage compartment cover, rev counter, service interval display, Soul dashboard, Speedo, Split folding backrest with centre armrest and unsplit rear seat bench, Start/Stop function, Stop/Start Technology, Storm grey roof lining, trip, Two tone horn, Tyre Pressure Loss Indicator, Tyre pressure monitoring system, Warning buzzer and light for front seatbelts unfastened, Welcome light, Wireless app connect, Woven fabric storage compartments in front and rear doors, XDS electronic differential lock for improved traction and handling