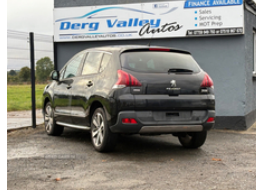


## Peugeot 3008 1.6 BlueHDi 120 Allure 5dr | Jul 2016

# £6,495

**£ 500 DEP £ 31 PER WEEK SAT NAV PAN ROOF BLUETOOTH CRUISE DAB**



<b>Miles:</b>	90000
<b>Fuel Type:</b>	Diesel
<b>Transmission:</b>	Manual
<b>Colour:</b>	Black
<b>Engine Size:</b>	1560
<b>CO2 Emission:</b>	108
<b>Body Style:</b>	Sport utility vehicle
<b>Insurance group:</b>	20E
<b>Reg:</b>	ND16NYY

### Technical Specs

DIMENSIONS	
<b>Length:</b>	4365mm
<b>Width:</b>	1837mm
<b>Height:</b>	1639mm
<b>Seats:</b>	5
<b>Luggage Capacity (Seats Up):</b>	512L
<b>Gross Weight:</b>	2020KG
<b>Max. Loading Weight:</b>	600KG

PERFORMANCE & ECONOMY	
<b>Fuel Consum. (Urban Cold):</b>	60.1MPG
<b>Fuel Consum. (Extra Urban):</b>	74.3MPG
<b>Fuel Consum. (Combined):</b>	68.9MPG
<b>Fuel Tank Capacity:</b>	60L
<b>Number Of Gears:</b>	6 SPEED
<b>Top Speed:</b>	112MPH
<b>Acceleration 0-100 km/h:</b>	12s
<b>Engine Power BHP:</b>	118BHP

- \*18" ALLOYS
- \*PANORAMIC ROOF
- \*BLUETOOTH CONNECTIVITY
- \*HEAD UP DISPLAY
- \*CRUISE CONTROL
- \*SAT NAV
- \*REVERSE CAMERA
- \*MULTIFUNCTIONING STEERING WHEEL
- \*USB INPUT
- \*ELECTRIC WINDOWS
- \*PRIVACY GLASS
- \*FOLDING DOOR MIRRORS
- \*DUAL ZONE AUTO CLIMATE CONTROL
- \*ISOFIX PREPERATION
- \*HILL ASSIST CONTROL
- \*£35 ROAD TAX
- \*TIMING BELT AND WATER PUMP DONE

CAR IN GOOD CONDITION

FINANCE FROM £42 PER WEEK WITH £495 DEPOSIT. POOR FINANCE APPLICATIONS WELCOME. PHONE FOR A PERSONALISED QUOTE.

DEAL INCLUDES:

1. FULL SERVICE CHECKOVER
2. FULL VALET
3. 6 MONTHS WARRANTY (UPGRADE TO 15 MONTHS FOR JUST £299)

## Vehicle Features

2 Isofix seat anchors, 3 point rear seatbelts x3, 3 x 12V power sockets, 60/40 split folding rear seat back and squab, ABS + EBD + EBA, Adaptable boot storage, Aluminium door sill trims, Automatic door lock/re-lock after 30 seconds, Black instrument panel with white needles and white backlighting, Body colour door mirrors and handles, Body coloured bumpers with chrome inserts, Central locking button on dash, Centre console storage, Cruise control + speed limiter, Cupholders - 2 in rear centre armrest, Deadlocks, Diesel particulate filter, Digital air con with climate control, Digital clock, Driver's lumbar support, Driver SMART airbag, Electric front windows, Electric rear windows, Electronic parking brake, ESP with ASR, Flat folding rear seats, Fold flat front passenger seat with picnic table, Fold flat front seats, Front and rear curtain airbags, Front and rear pre-tensioning and force limiting seatbelts, Front fog lights, Front headrests, Front parking aid with gap measurement, Front passenger SMART airbag with deactivate switch, Heating/air conditioning outlet in rear, Height adjustable driver/front passenger seats, Hill start assist, Instrument panel light dimmer, Leather steering wheel, LED daytime running lights, LED rear lights, Locking wheel bolts, Manual height/reach adjust steering wheel, Panoramic opening glass roof with electric blind, Peugeot Connect colour satellite navigation + bluetooth, RD45 stereo radio + MP3 CD Player, Rear centre armrest/ski flap, Rear headrests, Rear parking aid, Rear passenger footwell storage, Rear sunblind, Rear wiper, Reclining front seats, Remote control central locking with two flip keys, Retrovision pack - 3008, Reversing camera, Rolling code transponder immobiliser, Second glovebox behind steering wheel, Side airbags x 2, Speed sensitive power steering, Speed sensitive stereo volume, Split tailgate, Steering column mounted multifunction controls, Thatcham cat 1 ultrasonic alarm, Tinted rear windows, Trip computer, Tyre pressure sensor, USB port, Variable boot floor, Visibility pack - 3008