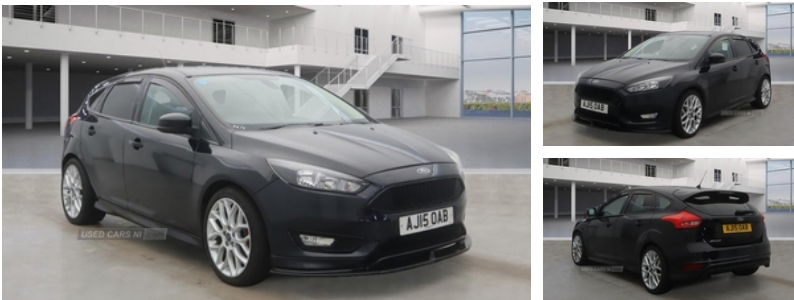




Ford Focus 1.5 TDCi 120 Zetec S 5dr | Jul 2015
FINANCE AVAILABLE / FREE ROAD TAX

£5,995



Stunning looking and driving FORD FOCUS 1.5 TDCI ZETEC S in Gleaming black for sale

This car is in fantastic condition both inside and out

It is very easy to run tax (FREE ROAD TAX) and insure thanks to its brilliant 1.5 turbo diesel engine

As it is the 1.5 TDCI ZETEC S model it comes packed full of features

We offer finance at a very competitive rate and are fully regulated by the FCA so you can buy from Causeway Cars with confidence

Vehicle Features

'Quickclear' heated windscreen/heated washer jets, 3 spoke leather steering wheel, 60/40 split back and cushion rear seats with 2 height adjustable headrests, ABS+Electronic Brake force Distribution, Air conditioning - CFC-free, Aux input, bluetooth connection with voice control, Body colour bumpers, Body colour door handles, Body colour door mirrors, Body colour rear spoiler, Body colour side skirt, Body styling kit, Centre console with sliding front armrest, Chrome finish on upper door line, Cloth upholstery, Contrast stitching - Red, Diesel particulate filter, Driver's seat manual height adjust, Driver's seat with adjustable lumbar support, Driver airbag, Eco mode, Electric adjustable heated door mirrors, emergency assistance, ESP with traction control + emergency brake assist, Front fog lights, Front inertia reel height adjustable seatbelts with pre-tensioners, Front passenger airbag, Front side airbags, Height adjustable front headrests, Hill start assist, Immobiliser-Passive Anti-Theft System (PATS), Isofix child seat preparation, Keyless Start, LED

Miles:	97000
Fuel Type:	Diesel
Transmission:	Manual
Colour:	Black
Engine Size:	1499
CO2 Emission:	98
Tax Band:	A (£0 p/a)
Body Style:	Hatchback
Insurance group:	16E
Reg:	AJ15OAB

Technical Specs

DIMENSIONS	
Length:	4358mm
Width:	1823mm
Height:	1484mm
Seats:	5
Luggage Capacity (Seats Up):	316L
Gross Weight:	1900KG
Max. Loading Weight:	632KG

PERFORMANCE & ECONOMY	
Fuel Consum. (Urban Cold):	65.7MPG
Fuel Consum. (Extra Urban):	83.1MPG
Fuel Consum. (Combined):	74.3MPG
Fuel Tank Capacity:	53L
Number Of Gears:	6 SPEED
Top Speed:	120MPH
Acceleration 0-100 km/h:	10.5s
Engine Power BHP:	118BHP



daytime running lights, Mini steel spare wheel, MyKey system, PAS, Reach + rake adjustable steering column, Remote central double locking, Side curtain airbags, Sports pedals, Sports style front seats, Sports suspension, Steering column with mounted audio controls, SYNC 1 DAB radio/CD, Tailgate wash/wipe, TFT cluster screen, Thatcham Cat.1 alarm, Three rear inertia reel lap/diagonal seatbelts, Trip computer, Tyre pressure monitoring system, USB connection