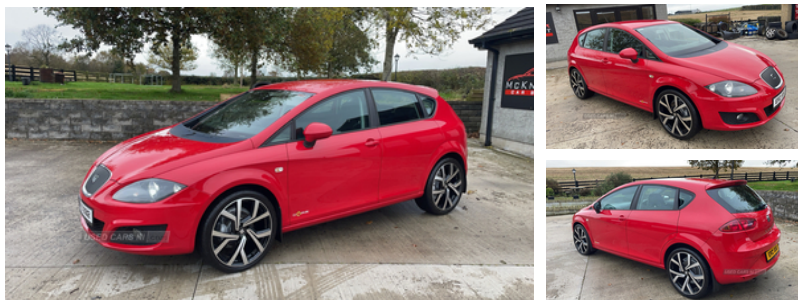


## Seat Leon 1.6 TDI CR Ecomotive S Copa 5dr | Sep 2012

# £4,350

**FREE ROAD TAX**



2012 seat leon  
1.6 tdi copa  
113000 miles full history  
dab radio  
real good tidy car  
New alloys extra

### Vehicle Features

'Lights On' warning buzzer, 2 rear cupholders, 3 Button folding key with remote window opening/closing function, 3 point rear seatbelts x3, 8 speakers, 12V power point front, 16" Endurance alloy wheels, ABS + TCS (with TCS deactivation), Active head restraints, Auto-lock/unlock doors, Auxiliary input socket, Bluetooth handsfree phone connection with steering wheel mounted controls, Body colour door handles, Body coloured bumpers, Body coloured door mirrors, Boot open warning light, Boot storage net, Child proof door locks, Chromed centre radiator grille surround, Cloth upholstery, Combined ipod/USB connection, Cornering front fog lights, Cruise control, Curtain airbags, Diesel particulate filter, Digital clock and outside temperature display, Driver/Front Passenger airbags, Driver seat height/lumbar adjust, Dual zone climate control, Dust/pollen filter, Dynamic steering response (DSR), Electrically adjustable door mirrors, Electric front windows + one touch + anti-pinch, Electric headlamp adjustment, Electro - mechanical power assisted steering, ESP + EBA (with ESP deactivation), Fasten seatbelt reminder, Front + rear carpet mats, Front adjustable head restraints, Front courtesy light with time delay, Front cupholder, Front map reading lights, Front seatbelt pretensioners, Front side airbags, Heated door mirrors, Height/reach adjust steering wheel, Height adj front seatbelts/belt force limiters, Hill hold control, Honeycomb front

<b>Miles:</b>	113000
<b>Fuel Type:</b>	Diesel
<b>Transmission:</b>	Manual
<b>Colour:</b>	Red
<b>Engine Size:</b>	1598
<b>CO2 Emission:</b>	99
<b>Tax Band:</b>	A (£0 p/a)
<b>Body Style:</b>	Hatchback
<b>Insurance group:</b>	15E
<b>Reg:</b>	ERZ9312

### Technical Specs

DIMENSIONS	
<b>Length:</b>	4315mm
<b>Width:</b>	1768mm
<b>Height:</b>	1455mm
<b>Seats:</b>	5
<b>Luggage Capacity (Seats Up):</b>	341L
<b>Gross Weight:</b>	1820KG
<b>Max. Loading Weight:</b>	495KG

PERFORMANCE & ECONOMY	
<b>Fuel Consum. (Urban Cold):</b>	60.1MPG
<b>Fuel Consum. (Extra Urban):</b>	83.1MPG
<b>Fuel Consum. (Combined):</b>	74.3MPG
<b>Fuel Tank Capacity:</b>	55L
<b>Number Of Gears:</b>	5 SPEED
<b>Top Speed:</b>	118MPH
<b>Acceleration 0-100 km/h:</b>	11.5s
<b>Engine Power BHP:</b>	103.3BHP

grille, Illuminated boot, Illuminated glovebox, Immobiliser, Isofix child seat preparation, Locking wheel bolts, Low fuel warning light, Multi function display, Passenger airbag deactivation system, Passenger seat back pocket, Passenger seat lumbar adjust, Radio/CD + MP3, Rear head restraints, Rear wash/wipe, Remote central locking + deadlocks, Remote fuel flap release, SEAT logo boot release, Second remote key, Service interval indicator, Split folding rear seat, Steering wheel mounted audio controls, Sunvisors with vanity mirrors (drivers with covered mirror + card holder), Tinted windows, Trip computer, Tyre pressure monitoring system, Tyre repair kit, Volumetric alarm with back up horn, White instrument lighting with brightness control