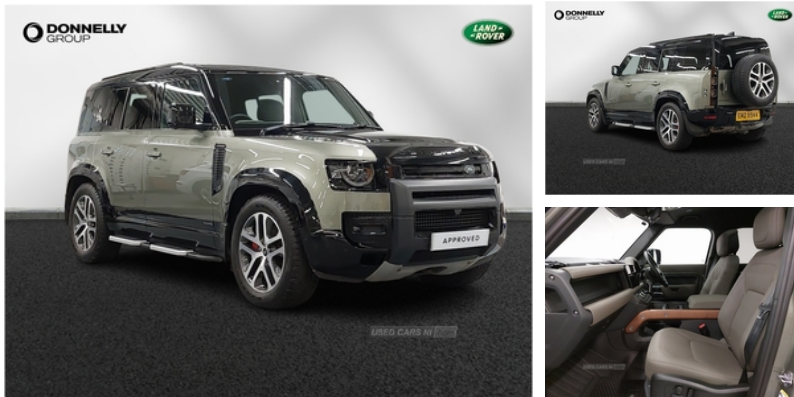


Land Rover Defender 3.0 D300 X 110 5dr Auto
| Apr 2022

£68,995



Land Rover Defender 3.0 D300 X 110 5dr Auto

Miles:	16775
Fuel Type:	Diesel
Transmission:	Automatic
Colour:	Pangea Green
Engine Size:	2997
Tax Band:	Petrol/Diesel (£600 p/a)
Body Style:	Sport utility vehicle
Insurance group:	43E
Reg:	EMZ8944

Vehicle Features

3 seat bench in 2nd row, 3D Surround Camera with 360 View, 3D Surround Camera with 360 View, 5 x 3 point seatbelts, 11.4" touchscreen, 12V power socket in loadspace, 14 way heated and cooled electric adjustable memory front seats with 4 way manual headrests, 40:20:40 folding, 40:20:40 folding, 180 Rear View, 180 Rear View, 360 degree parking aid, ABS, Adaptive cruise control, Adaptive dynamics, Alarm, All terrain progress control, Android Auto, Anti-lock Braking System, Apple CarPlay, Assisted tailgate with soft close, Automatic headlight levelling, Automatic headlights, beep and flash and door), beep and flash and door), Blind spot assist, Bluetooth system, Brake hold function, Brake pad wear indicator, Bright metal pedals, CBC - (Cornering brake control), Centre high mounted stop light, Clear exit monitor, ClearSight interior rear view mirror, Climate, Climate, Configurable Terrain Response, Connected navigation pro, Cornering brake control (CBC), Cross car beam in Dark Grey Powder Coat, Customer configurable autolock, DAB Radio (Digital Audio Broadcasting), Darkened LED tail lights, Domestic plug socket, Driver and passenger airbags, Driver condition monitor, DSC - Dynamic Stability Control, Durable rubber cabin flooring, Durable rubber loadspace flooring, EBD - Electronic brakeforce distribution, Ebony morzine headlining, Electric heated/power fold door mirrors with approach lights and auto dimming driver side, Electric parking brake (EPB), Electric power assisted steering (EPAS), Electric reach + rake adjustable steering column, Electric windows with one touch open/close and anti-trap, Electronic active differential with brake torque vectoring, Electronic air suspension, Emergency braking, ESP +

Technical Specs

DIMENSIONS	
Length:	5018mm
Width:	2008mm
Height:	1967mm
Seats:	5
Gross Weight:	3200KG
Max. Loading Weight:	860KG
PERFORMANCE & ECONOMY	
Fuel Consum. (Combined):	32.1MPG
Fuel Tank Capacity:	85L
Number Of Gears:	8 SPEED
Top Speed:	119MPH
Acceleration 0-100 km/h:	7s
Engine Power BHP:	296.4BHP



traction control, Follow me home lighting, Footwell lights, Forward Vehicle Guidance, Forward Vehicle Guidance, Front airbags with passenger seat occupant detector, Front fog lights, Front passenger isofix child seat attachment, Front Traffic Detection, Front Traffic Detection, HDC - Hill descent control, Head up Display, heated rear seats with centre armrest, heated rear seats with centre armrest, Heated rear window with timer, Heated steering wheel, Heated windscreen, Hill launch assist, Illuminated metal tread plates with brand name script, Immobiliser, InControl app, InControl app, Interactive driver display, Intrusion sensor, Keyless entry, Lane keep assist, LESS Wireless charger, Loadspace cover, Loadspace Hook, Locking wheel nuts, Low traction launch, Meridian 700w surround sound audio system with 15 speakers, Multifunction steering wheel, Online pack - Defender with data plan, Online pack with data plan - Defender, Optimised assistance call, Optimised assistance call, Overhead stowage for sunglasses, Pivi pro connected, Power operated child locks, Premium cabin lighting, Puddle lights, Push button start, Rain sensing windscreen wipers, Rear collision monitor, Rear fog lights, Rear headrests, Rear isofix, Rear reading lights, Rear side wing doors, Rear traffic monitor, Rear wiper, Remote for (e-Call, Remote for (e-Call, RSC - Roll stability control, Seat belt reminder, Single front passenger seat, Storage glovebox, Sunvisors with illuminated vanity mirrors, Terrain Response 2, Tow Hitch Assist and clear sight Ground View, Tow Hitch Assist and clear sight Ground View, TPMS (Tyre pressure monitoring system), Traffic sign recognition with adaptive speed limiter, Trailer stability assist, Trip computer, Twin front cupholders with cover, Wade Sensing, X badge, X exterior pack - Defender