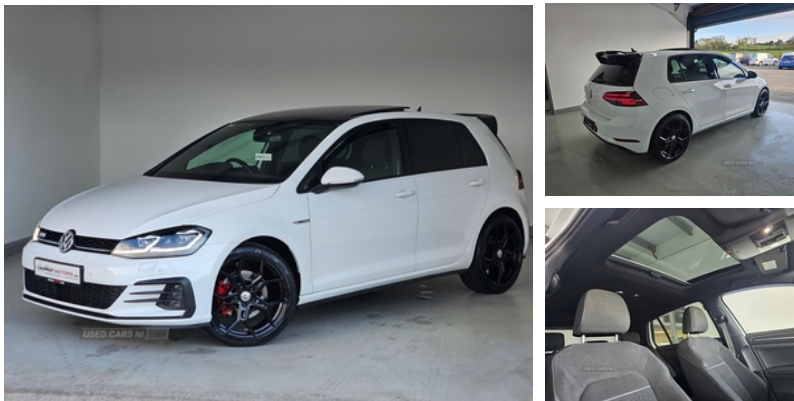


Volkswagen Golf 2.0 TDI 184 GTD 5dr DSG | Apr 2019

£16,995



STUNNING GOLF GTD WITH SUNROOF, LOADED WITH SPEC, FULL DIGITAL SERVICE HISTORY, REVERSE CAMERA, BLUETOOTH PHONE AND TOUCHSCREEN MEDIA, DAB RADIO, LED LIGHTS, PARKING SENSORS, HEADED FRONT SEATS, NAVIGATION SYTEM, REAR PRIVACY GLASS, CLIMATE CONTROL, CRUISE CONTROL, PADDLE SHIFT GEARS, CENTRAL DOOR LOCKING, FITTED WITH 19" ALLOYS AN OPTIONAL EXTRA COMES FULLY SERVICED WITH 6 MONTHS WARRANTY

Vehicle Features

'Lights On' warning buzzer, 3 rear headrests, 3 rear three point seatbelts, 3D-LED tinted rear light clusters with indicator sweep function, 4 load lashing points in luggage compartment, 12V socket in luggage compartment, 60/40 split folding rear seat backrest, ACC - Adaptive cruise control with front assist, Airbags - Driver's and front passenger's, Alarm with interior protection and deactivation via infotainment system, Ambient lighting pack - Golf, Anti-lock Braking System (ABS) with Hydraulic Brake Assist (HBA), Anti-tramp function, Automatic post collision braking system, Bag hook in luggage compartment x 2, Battery regeneration during braking, Black headlining, Black rear diffuser, Bluetooth telephone and audio connection for compatible devices, Body colour door handles, Body colour door mirrors with integrated indicators, Body colour rear roof spoiler, Body colour sports bumpers, Brake pad wear indicator warning light, Child locks on rear doors, Chrome plated air vent surround, Chrome plated electric mirror adjustment light switch surround, city emergency brake and speed limiter, Climate control - 2 zone electronic air conditioning with automatic air recirculation and allergy filter, Composition media system, Convenience Pack - Golf, Cooled glovebox, curtain airbag, DAB Digital radio receiver,

Miles:	82000
Fuel Type:	DIESEL
Transmission:	Automatic
Colour:	White
Engine Size:	1968
Tax Band:	Petrol/Diesel (£190 p/a)
Body Style:	Hatchback
Insurance group:	27E
Reg:	PJ190FN

Technical Specs

DIMENSIONS	
Length:	4258mm
Width:	1799mm
Height:	1492mm
Seats:	5
Luggage Capacity (Seats Up):	380L
Gross Weight:	1890KG
Max. Loading Weight:	570KG
PERFORMANCE & ECONOMY	
Fuel Consum. (Urban Cold):	53.3MPG
Fuel Consum. (Extra Urban):	70.6MPG
Fuel Consum. (Combined):	62.8MPG
Fuel Tank Capacity:	50L
Number Of Gears:	7 SPEED
Top Speed:	143MPH
Acceleration 0-100 km/h:	7.4s
Engine Power BHP:	181BHP

Diesel particulate filter, distance monitoring, Driver's knee, Driver/Passenger optimised head restraints, Driver alert system, Driver profile selection, Driving Mode Selection with four preset modes - Eco, Dusk sensor + automatic driving lights, Dust/pollen filter, Electrically adjustable and heated door mirrors, Electric front windows, Electric rear windows, Electronic engine immobiliser, electronic odometer, Electronic parking brake with auto hold, Electronic stability control (ESC) including Electronic differential lock (EDL) and ASR (Traction control) with deactivation via infotainment system, exterior temperature and fuel gauge, Front + rear carpet mats, Front centre armrest with storage compartment and two rear air vents, Front seat back storage pockets, front side impact and passenger's airbag deactivation switch, Front ventilated disc brakes and rear disc brakes, Fully galvanised body, Grab handles front x 2, Heated rear windscreen, height adjustable and removable, Height and reach adjustable steering wheel, High level 3rd brake light incorporating LED Technology, Honeycomb black decorative inserts, Honeycomb radiator grille - black, Illuminated door sills, Illuminated vanity mirrors, Instrument cluster in white, Instrument lighting white adjustable panel illumination, Interior light delay, Isofix preparation for 2 rear child seats, Keyless entry with start/stop button on centre console, Lane assist with dynamic light assist and traffic sign recognition, Leather gear knob and handbrake grip, LED daytime running lights, LED front fog lights with static cornering light function, Light and Sight pack - Golf, Load through provision with rear centre armrest and cupholders x2, Lowered sports suspension, Luggage compartment lighting, Mirror pack - Golf, Misfuelling protection device, MP3/WMA compatibility, Multi device interface (MDI) with USB connection, Multifunction computer with visual gear change recommendation for fuel consumption, Multifunction leather steering wheel with GTE logo and selector lever boot grip with grey stitching including paddle shift, normal, Overhead storage box, Piano black centre console, Pre crash preventive occupant protection, Premium USB cable in choice of either Apple or Android smartphone compatibility, Progressive power assisted steering, Push tank flap, Rear fog lamp, Rear view camera, Rear window aerial, Rear window wash/wipe with intermittent wipe, rear x 2 with integrated coat hooks, Reflectors in all doors, Remote central locking with 2 remote folding keys, rev counter, SD card slot, service interval display, Shiny black aerofoil downside, Sill extensions, SMS Functionality, Speedo, sport or individual modes, Stainless steel pedals, Steel space saver spare wheel, Stop/start system, Storage box in luggage compartment, Storage compartment in roof console with cover, Storage compartments in front doors, Storage compartments in rear doors, Stowable luggage compartment cover, Sun visors,

Three point height adjustable front seatbelts with tensioners, trip, Twin exhaust tailpipe, Tyre pressure loss indicator, Unique GTD badging, Uniquely shaped front/rear bumpers, USB and SD card connectivity, Variable boot floor, Volkswagen media control, Warning buzzer and light for front seatbelts unfastened, Windscreen wipers/ intermittent wipe + 4 position delay, XDS plus electronic differential lock