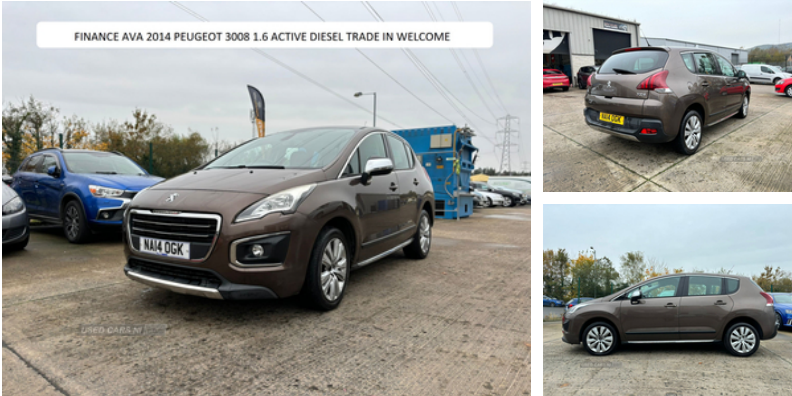




unit 8 pembroke loop road springbank industrial estate springbank lane bt17 0fe, Belfast, BT17 0fe  
Desy: 07392674507

**Peugeot 3008 1.6 HDi Active 5dr | May 2014**  
**TRADE IN WELCOME**

**£4,650**



<b>Miles:</b>	66000
<b>Fuel Type:</b>	Diesel
<b>Transmission:</b>	Manual
<b>Colour:</b>	Brown
<b>Engine Size:</b>	1560
<b>CO2 Emission:</b>	125
<b>Tax Band:</b>	D (£160 p/a)
<b>Body Style:</b>	Sport utility vehicle
<b>Insurance group:</b>	18A
<b>Reg:</b>	NA14OGK

belfastautosales.co.uk 2014 peugeot 3008 active 1.6 diesel 6 speed manual bluetooth parking sensors cruise control climate control alloys air con electric folding mirrors electric windows only 66k miles full service history mot till april 2025 £4650 click on belfastautosales.co.uk now and apply for finance \*\*\*\*\* ON BENIFITS WE CAN HELP \*\*\*\*\*

FINANCE AVAILABLE TRADE IN WELCOME INDOORE VIEWING

**Vehicle Features**

2 Isofix seat anchors, 3 point rear seatbelts x3, 3 x 12V power sockets, 60/40 split folding rear seat back and squab, ABS + EBD + EBA, Adaptable boot storage, Aluminium door sill trims, Automatic door lock/re-lock after 30 seconds, Black instrument panel with red needles and white backlighting, Body colour door mirrors and handles, Body coloured bumpers, Boot net, Central locking button on dash, Centre console storage, Cruise control + speed limiter, Cupholders - 2 in rear centre armrest, Deadlocks, Diesel particulate filter, Digital clock, Driver SMART airbag, Electric front windows, Electric rear windows, Electronic parking brake, ESP with ASR, Flat folding rear seats, Fold flat front passenger seat with picnic table, Front and rear curtain airbags, Front and rear pre-tensioning and force limiting seatbelts, Front fog lights, Front headrests, Front passenger SMART airbag with deactivate switch, Heating/air conditioning outlet in rear, Height adjustable driver/front passenger seats, Hill start assist, Instrument panel light dimmer, Leather steering wheel, LED daytime running lights, LED rear lights, Locking wheel bolts,

**Technical Specs**

<b>DIMENSIONS</b>	
<b>Length:</b>	4365mm
<b>Width:</b>	1837mm
<b>Height:</b>	1639mm
<b>Seats:</b>	5
<b>Luggage Capacity (Seats Up):</b>	512L
<b>Gross Weight:</b>	2030KG
<b>Max. Loading Weight:</b>	440KG

<b>PERFORMANCE &amp; ECONOMY</b>	
<b>Fuel Consum. (Urban Cold):</b>	48.7MPG
<b>Fuel Consum. (Extra Urban):</b>	67.3MPG
<b>Fuel Consum. (Combined):</b>	58.9MPG
<b>Fuel Tank Capacity:</b>	60L
<b>Number Of Gears:</b>	6 SPEED
<b>Top Speed:</b>	112MPH
<b>Acceleration 0-100 km/h:</b>	13.6s



Manual height/reach adjust steering wheel, Portable light in boot, RD45 stereo radio + MP3 CD Player, Rear centre armrest/ski flap, Rear headrests, Rear passenger footwell storage, Rear wiper, Reclining front seats, Remote control central locking with two plip keys, Retrovision pack - 3008, Rolling code transponder immobiliser, Second glovebox behind steering wheel, Side airbags x 2, Space saver spare wheel, Speed sensitive power steering, Speed sensitive stereo volume, Split tailgate, Steering column mounted multifunction controls, Trip computer, Visibility pack - 3008

**Engine Power BHP:** 114BHP