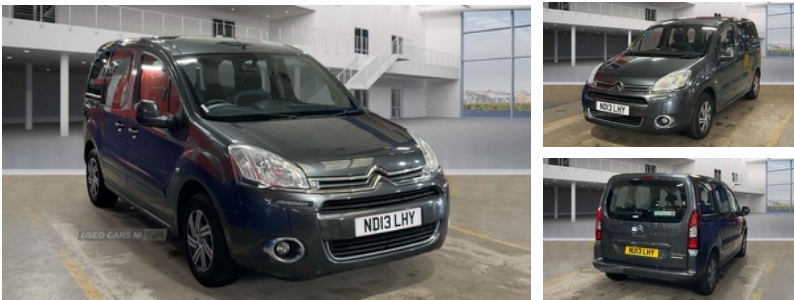


**Citroen Berlingo Multispace 1.6 HDi 90 VTR 5dr
 | Jul 2013**

£5,995

****ARRIVING SOON WAITING PREPARATION****



****MGL CAR SALES****

****VIEWING BY APPOINTMENT****

****DEPOSIT SECURES****

****CONTACT MARK 07921663415****

DELIVERY AVAILABLE**

****FINANACE PACKAGES ****

DOCUMENTED SERVICE HISTORY

TWO OWNER CAR

MULTI FUNCTION TRIP COMPUTER

AUDIO REMOTE CONTROL

ALARM

IMMOBILISER

FACTORY PRIVACY GLASS

SPORTS STYLE INTERIOR

ISOFIX

SOLD WITH YEARS MOT

RECENTLEY SERVICED

Vehicle Features

1/3 to 2/3 split folding rear seats, 3 point rear seatbelts x3, 15" steel wheels with full wheel covers, ABS/EBD, Carpeted loadspace, Cigarette lighter, Comfort pack - Berlingo Multispace, Diesel particulate filter, Driver and passenger airbags, EBA, Front head restraints, Front passenger airbag deactivation, Front seat storage pockets, Full size spare wheel, Height/reach adjustable steering column, Immobiliser, Isofix system on outer rear seats, Large front door pockets, Look pack - Berlingo Multispace, Multi function trip computer, Overhead storage shelf, Quad cloth upholstery, RDS stereo radio + CD player/mp3 facility, Rear head restraints, Rear wiper, Removable / retractable luggage cover, Service interval indicator, Super plus package - Berlingo Multispace, Twin sliding side doors, Under floor storage

Miles:	88194
Fuel Type:	Diesel
Transmission:	Manual
Colour:	GUNMETAL GREY
Engine Size:	1560
CO2 Emission:	135
Tax Band:	E (£190 p/a)
Body Style:	MPV
Insurance group:	7E
Reg:	ND13LHY

Technical Specs

DIMENSIONS	
Length:	4380mm
Width:	1810mm
Height:	1852mm
Seats:	5
Luggage Capacity (Seats Up):	675L
Gross Weight:	2040KG
Max. Loading Weight:	630KG

PERFORMANCE & ECONOMY	
Fuel Consum. (Urban Cold):	46.3MPG
Fuel Consum. (Extra Urban):	61.4MPG
Fuel Consum. (Combined):	54.3MPG
Fuel Tank Capacity:	60L
Number Of Gears:	5 SPEED
Top Speed:	100MPH
Acceleration 0-100 km/h:	14.3s
Engine Power BHP:	91.2BHP

compartment [row 2], Variable PAS