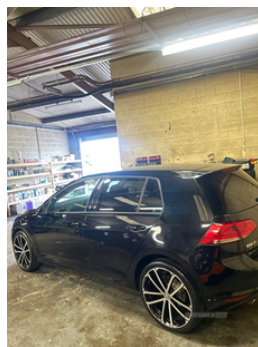
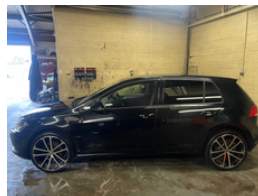
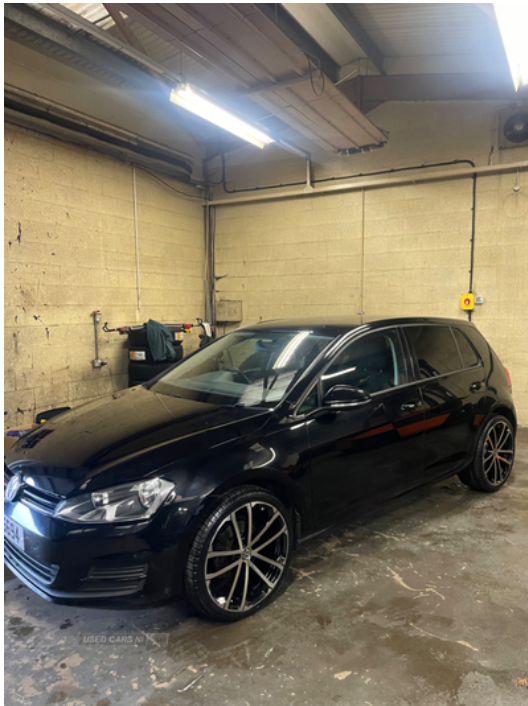


**Volkswagen Golf 1.6 TDI 110 S 5dr | Feb 2016**  
**AWAITING PREP BRAND NEW 19" ALLOYS ZERO TAX COMING SOON**

**£5,995**



COMING SOON  
 AWAITING PREP

2016 Volkswagen Golf S 1.6 TDI  
 2 Keys

ZERO TAX  
 BRAND NEW 19" ALLOYS OPTIONAL EXTRA £650

WILL COME WITH FULL YEARS MOT AND SERVICED FOR NEW OWNER JUST HAD NEW REAR DISCS AND PADS ALSO

FINANCE AVAILABLE contact for personal quote prior to viewing

Nationwide Warranty Available Per Request

£5995 (Alloys Optional Extra £650)

**Vehicle Features**

'Lights On' warning buzzer, 3 point height adj front seatbelts + pretensioners, 3 rear 3 point seatbelts, 3 rear headrests, 3 spoke steering wheel, 6.5" colour display screen, 8 speakers, 60/40

<b>Miles:</b>	140000
<b>Fuel Type:</b>	Diesel
<b>Transmission:</b>	Manual
<b>Colour:</b>	Black
<b>Engine Size:</b>	1598
<b>CO2 Emission:</b>	99
<b>Tax Band:</b>	A (£0 p/a)
<b>Body Style:</b>	Hatchback
<b>Insurance group:</b>	13E
<b>Reg:</b>	VIG6694

**Technical Specs**

<b>DIMENSIONS</b>	
<b>Length:</b>	4255mm
<b>Width:</b>	1799mm
<b>Height:</b>	1452mm
<b>Seats:</b>	5
<b>Luggage Capacity (Seats Up):</b>	380L
<b>Gross Weight:</b>	1800KG
<b>Max. Loading Weight:</b>	550KG

<b>PERFORMANCE &amp; ECONOMY</b>	
<b>Fuel Consum. (Urban Cold):</b>	62.8MPG
<b>Fuel Consum. (Extra Urban):</b>	80.7MPG
<b>Fuel Consum. (Combined):</b>	74.3MPG
<b>Fuel Tank Capacity:</b>	50L
<b>Number Of Gears:</b>	5 SPEED
<b>Top Speed:</b>	00119MPH
<b>Engine Power BHP:</b>	108.6BHP

split folding rear seat, ABS, Automatic post collision braking, aux-in, Bag hook in luggage compartment, Black front air intake and radiator grilles, Bluetooth Telephone preparation, Body colour bumpers, Body colour door handles, Body colour door mirrors with integral indicators, Boot lashing points, Brake pad wear indicator warning light, CD/MP3/WMA, Child locks on rear doors, Chrome air vent surrounds, Composition media system, cooled glovebox, Courtesy light delay, Cover for storage compartment in centre, DAB Digital radio, Dark rhodium decorative inserts in dash, Daytime running lights, Diesel particulate filter, Door open warning reflectors, Driver/Front Passenger airbags, Driver/front passenger seat height adjustment, Driver/Passenger whiplash optimised head restraints, Drivers knee airbag, Dust/pollen filter, Electrically adjustable and heated door mirrors, Electric front windows, Electronic engine immobiliser, Electronic parking brake with auto hold, Electronic tyre pressure monitoring, ESP with EDL + ASR, Exterior temperature gauge, Flat tyre indicator, Front and rear curtain airbags, Front centre armrest with storage box and rear air vents, Front passenger airbag deactivation, Front reading lights, Front side airbags, Fuel cut off safety device, Grab handles, HBA (Hydraulic Brake Assist), Heated rear windscreen, Height/reach adjust steering wheel, height adjustable and removable, illuminated, Illuminated vanity mirrors, Instrument cluster in white, Isofix preparation for 2 rear child seats, Lockable, Luggage compartment cover, Luggage compartment lighting, MDI with USB/iPod connection cables, Multifunction computer, PAS - speed related, Range adjustable headlights, Rear cupholder, Rear diffuser, Rear roof spoiler, Rear windscreen washer and wiper with interval delay, Remote central locking with 2 remote folding keys, Rev counter, Salt cloth upholstery, Steel space saver spare wheel, Storage compartments in doors, Trip and service interval display, USB and SD card reader, Variable boot floor, Warning buzzer and light for front seatbelts unfastened, Warning triangle and first aid kit holder, White adjustable panel illumination, Windscreen wipers/ intermittent wipe + 4 position delay, XDS electronic differential lock