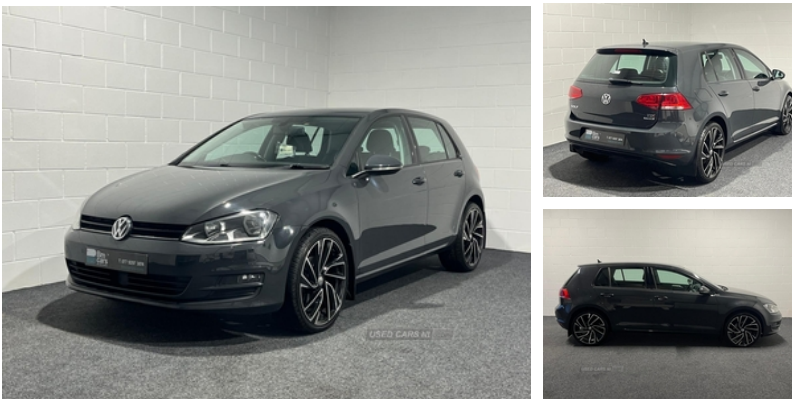


Volkswagen Golf 1.6 TDI 110 Match Edition 5dr | Apr 2016

£8,995



Indoor and after hours viewing available

Part ex and finance available
 PM for an individual finance quote

Tel/Whatsapp 07792973874

Vehicle Features

'Lights On' warning buzzer, 3 point height adj front seatbelts + pretensioners, 3 rear 3 point seatbelts, 3 rear headrests, 3 spoke steering wheel, 12V socket in luggage compartment, 60/40 split folding rear seat, ABS, ACC - Adaptive cruise control with front assist, Alarm with interior protection, Auto dimming rear view mirror, Automatic coming/leaving home lighting function, Automatic headlights, Automatic post collision braking, aux-in, Bag hook in luggage compartment, Black front air intake and radiator grilles, Bluetooth Telephone preparation, Body colour bumpers, Body colour door handles, Body colour door mirrors with integral indicators, Boot lashing points, Brake pad wear indicator warning light, Brushed stainless steel decorative inserts in dash, CD/MP3/WMA, Child locks on rear doors, Chrome-plated light switch surround, Chrome air vent surrounds, city emergency brake and speed limiter, Composition media system, cooled glovebox, Cornering front fog lights, Courtesy light delay, Cover for storage compartment in centre, DAB Digital radio, Diesel particulate filter, distance monitoring, Door open warning reflectors, Driver/Front Passenger airbags, Driver/front passenger seat height adjustment, Driver/Passenger whiplash optimised head restraints, Driver alert system, Driver profile selection, Drivers knee airbag, Dust/pollen filter, Electrically adjustable and heated door mirrors, Electric folding door mirrors

Miles:	81000
Fuel Type:	Diesel
Transmission:	Manual
Colour:	Grey
Engine Size:	1598
CO2 Emission:	99
Tax Band:	A (£0 p/a)
Body Style:	Hatchback
Insurance group:	12E
Reg:	ML16HWP

Technical Specs

DIMENSIONS	
Length:	4255mm
Width:	1799mm
Height:	1452mm
Seats:	5
Luggage Capacity (Seats Up):	380L
Gross Weight:	1800KG
Max. Loading Weight:	576KG

PERFORMANCE & ECONOMY	
Fuel Consum. (Urban Cold):	62.8MPG
Fuel Consum. (Extra Urban):	83.1MPG
Fuel Consum. (Combined):	74.3MPG
Fuel Tank Capacity:	50L
Number Of Gears:	5 SPEED
Top Speed:	121MPH
Acceleration 0-100 km/h:	10.1s
Engine Power BHP:	108.6BHP

with puddle lamps, Electric front windows, Electric rear windows, Electronic engine immobiliser, Electronic parking brake with auto hold, Electronic tyre pressure monitoring, ESP with EDL + ASR, Exterior temperature gauge, Flat tyre indicator, Front and rear curtain airbags, Front centre armrest with storage box and rear air vents, Front passenger airbag deactivation, Front reading lights, Front seat back storage pockets, Front side airbags, Fuel cut off safety device, Grab handles, HBA (Hydraulic Brake Assist), Heated rear windscreen, Height/reach adjust steering wheel, height adjustable and removable, illuminated, Illuminated vanity mirrors, Instrument cluster in white, Isofix preparation for 2 rear child seats, Load through provision, Lockable, Luggage compartment cover, Luggage compartment lighting, MDI with USB/iPod connection cables, Multifunction computer, Multifunction leather steering wheel with leather gear knob/handbrake grip, PAS - speed related, Pre crash system, Rain sensor, Range adjustable headlights, Rear centre armrest with 2 cupholders, Rear cupholder, Rear diffuser, Rear reading lights, Rear roof spoiler, Rear windscreen washer and wiper with interval delay, Remote central locking with 2 remote folding keys, Rev counter, Reverse activated kerb-view adjustment on passenger's door mirror, Steel space saver spare wheel, Storage box in luggage compartment, Storage compartments in doors, TFT display screen, Trip and service interval display, Ultrasonic front and rear optical and audible parking sensors, USB and SD card reader, Variable boot floor, Warning buzzer and light for front seatbelts unfastened, Warning triangle and first aid kit holder, White adjustable panel illumination, Windscreen wipers/intermittent wipe + 4 position delay, Winter pack - Golf, XDS electronic differential lock