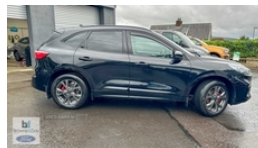




Ford Kuga 2.5 PHEV ST-Line 5dr CVT | Aug 2022

£22,795



Ford Kuga 2.5 PHEV ST-Line Edition 5dr CVT

Vehicle Features

2nd row sliding seats, 3-Pin 230V Domestic socket home charging cable, 3x3 point rear seatbelts, 8 way manual passenger seat including lumbar support and height adjust, Airbags - front driver/passenger, Alloy pedals, Ambient lighting, andriod auto/apple carPlay and navigation with Ford pass connect, App Link, Auto dimming rear view mirror, Auto headlamps with high and low beam, Auto wipers, B&O with large instrument cluster pack - Kuga, Centre console with electronic parking brake, Dark headlining and pillars, dark mesh upper grille, Driver impairment monitor, Drivers knee airbag, Dual electronic automatic temperature control, Electronic stability control (ESC) and ABS, Engine immobiliser, Flat bottomed leather steering wheel in sensico with red stitching, Ford DAB audio system with 6 speakers, Ford easy fuel, Ford MyKey Gen 2 safety system, Ford SYNC 3 with 8" colour touchscreen, front and rear curtain, Front and rear head restraints, Front and rear parking sensors, Front LED fog lights with cornering function, front painted skid plates, Full LED headlamps, Intelligent speed assist, Keyless entry, Keyless start with 'Ford Power' starter button, Lane keeping aid with lane departure warning, Large rear spoiler, LED daytime running lights, LED rear lights, Locking wheel nuts, Lumbar support, Mobile phone wireless charging pad, Post collision braking, Power assist steering, Powered child proof rear door locks, Power folding heated door mirrors with puddle lights, Power front/rear windows with global close, Pre collision assist with autonomous emergency braking, Privacy

| | |
|-------------------------|-----------------------|
| Miles: | 19777 |
| Fuel Type: | Petrol Parallel PHEV |
| Transmission: | Automatic |
| Colour: | Agate Black |
| Engine Size: | 2488 |
| Body Style: | Sport utility vehicle |
| Insurance group: | 20E |
| Reg: | YUI5458 |

Technical Specs

DIMENSIONS

| | |
|-------------------------------------|--------|
| Length: | 4620mm |
| Width: | 1883mm |
| Height: | 1666mm |
| Seats: | 5 |
| Luggage Capacity (Seats Up): | 612L |
| Gross Weight: | 2320KG |
| Max. Loading Weight: | 622KG |

PERFORMANCE & ECONOMY

| | |
|---------------------------------|----------|
| Fuel Consum. (Combined): | 235.4MPG |
| Number Of Gears: | 1 SPEED |
| Top Speed: | 125MPH |
| Acceleration 0-100 km/h: | 9.2s |
| Engine Power BHP: | 221.3BHP |

glass, Quickclear heated windscreen, Rear charging point, rear painted diffuser, Red brake calipers, Remote powered central double locking doors, Selectable drive modes, Sensico partial premium leather upholstery, Sports seats, Sports suspension, ST Line body styling kit with unique front and rear fascia and bumper, ST Line front and rear floor mats, ST Line front scuff plates, Thatcham category 1 alarm, Twin exhausts, Tyre pressure monitoring system