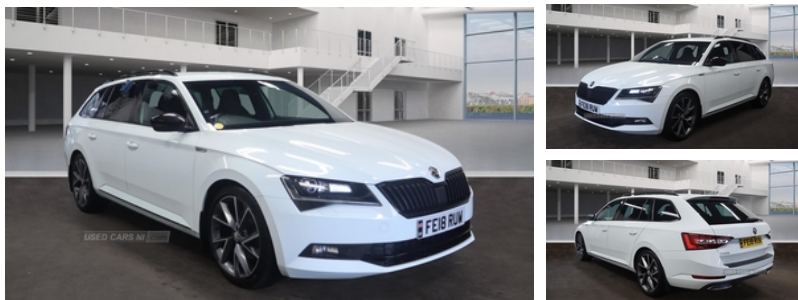


Skoda Superb 2.0 TDI CR Sport Line 5dr DSG [7 Speed] | Mar 2018

DUE SOON, ESTATE, 2 OWNERS FROM NEW



Car is due in stock soon direct from England, more photos and details to follow once it arrives.

2 Owners from new
 Assured mechanical inspection 80k miles
 SATNAV, CarPlay
 Privacy glass
 19" Wheels
 Half leather & suede interior

Excellent condition, please call for full details.

HPI clear

Warranted miles

Warranty packages available - 12 / 24 / 36 months

Reserve this car today for £99

More photos are available with walk around videos. Various contact less payment options available along with online finance which can all be applied for and signed from your home.

Delivery available to your door!

Trade in's accepted.

Car sourcing available.

Second generation family business **Est in 1983**, we pride ourselves on customer service, the quality of our vehicles, competitive pricing and our comprehensive aftercare.

Visit our website for a finance quote today - [www](http://www.usedcarsni.com)

Miles:	80000
Fuel Type:	Diesel
Transmission:	Semi-Automatic
Colour:	White
Engine Size:	1968
CO2 Emission:	119
Tax Band:	Petrol/Diesel (£190 p/a)
Body Style:	Estate
Insurance group:	21E
Reg:	FE18RUW

Technical Specs

DIMENSIONS	
Length:	4856mm
Width:	1864mm
Height:	Not Availablemm
Seats:	5
Luggage Capacity (Seats Up):	660L
Gross Weight:	2184KG
Max. Loading Weight:	664KG
PERFORMANCE & ECONOMY	
Fuel Consum. (Urban Cold):	51.4MPG
Fuel Consum. (Extra Urban):	68.9MPG
Fuel Consum. (Combined):	61.4MPG
Fuel Tank Capacity:	66L
Number Of Gears:	7 SPEED
Top Speed:	132MPH
Acceleration 0-100 km/h:	9.1s
Engine Power BHP:	147.5BHP

Vehicle Features

3 point height adj front seatbelts + pretensioners, 3 rear 3 point seatbelts + pretensioners, 3 rear height adjustable headrests, 12v power point in centre console, 12V power point in luggage area, 19" Vega alloy wheels, ABS + EDL + ASR + MSR + ESC, Adaptive cruise control, Aero wiper + intermittent function, Alcantara/leather upholstery, Anti-theft wheel bolts, Anti theft alarm with interior monitor and tilt sensor, Apple car play/Android Auto, Auto dimming rear view mirror, Auxiliary heater, Bi-Xenon headlights with AFS + integrated headlight washers + LED daytime running lights, Black door trim, Black gloss door mirror housings, Black roof lining, Bluetooth telephone connection, Body colour bumpers, Body colour door handles, Carbon interior trim, CareConnect and Emergency Call, CBC - (Cornering brake control), Columbus colour 9.2" touch screen satellite navigation system, Cornering front fog lights, Curtain airbags, DAB Digital radio, Diesel particulate filter, Door open warning, Drive mode selector, Driver's electric lumbar adjustment, Driver/Front Passenger airbags, Driver/front passenger side airbags, Driver and passenger seatbelts with warning light, Drivers knee airbag, DVD, Dynamic steering response (DSR), Electrically adjustable/heated/folding door mirrors with puddle lights/Integrated indicators and memory function, Electric driver's seat with memory, Electro-mechanical PAS, Electronic parking brake, External temperature gauge, Fatigue detection system, Front/rear floor mats, Front and rear electric windows, Front armrest with storage box, Front assistant collision mitigation, Front passenger seat electric height adjust, Gearshift paddles, Gloss black side window surrounds, Halogen headlights, HBA (Hydraulic Brake Assist), Height/reach adjust steering wheel, Height/tilt adjustable front headrests, Hill hold control, Illuminated air conditioned glovebox, Immobiliser, Isofix on 2nd row rear seats, Keyless entry and start, Leather gearknob and handbrake lever, LED brake lights, LED package plus - Superb, LED rear pack - superb, Luggage compartment lighting, Mirror link, Multi-Collision braking, Multifunction colour trip computer, Multifunction steering wheel, Passenger airbag deactivate switch, Privacy glass, Radio/MP3/aux-in/USB, Rain sensor, Rear centre armrest with cupholders, Rear door child safety locks, Rear exhaust diffuser styling elements, Rear wiper, Remote central locking with SAFE system, Remote fuel cap release, Removable LED light in boot, SD card and Wi-fi, Service interval indicator, SmartLink, Speed warning indicator, Split folding rear seats, Sport front exterior styling with black grille, Sports seats, Sunglasses storage, Ticket holder, Twin exhaust tailpipe, Tyre pressure monitor, Voice control system, XDS

electronic differential lock