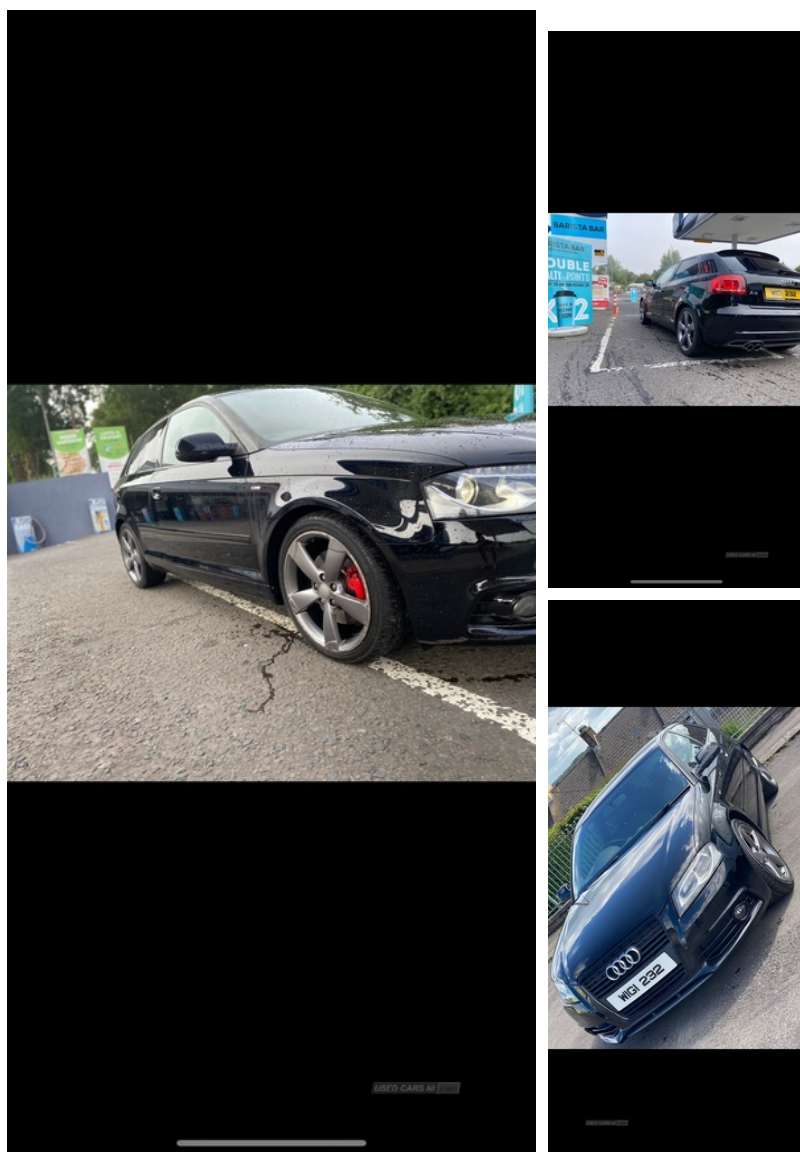


Audi A3 2.0 TDI 170 Black Edition 3dr [Start Stop] | Jul 2011

£4,250



Miles:	133000
Fuel Type:	Diesel
Transmission:	Manual
Colour:	Black
Engine Size:	1968
CO2 Emission:	123
Tax Band:	D (£160 p/a)
Body Style:	Hatchback
Insurance group:	27E
Reg:	WIG1232

Technical Specs

DIMENSIONS	
Length:	4238mm
Width:	1765mm
Height:	1421mm
Seats:	5
Luggage Capacity (Seats Up):	350L
Gross Weight:	1895KG
Max. Loading Weight:	560KG

PERFORMANCE & ECONOMY	
Fuel Consum. (Urban Cold):	49.6MPG
Fuel Consum. (Extra Urban):	67.3MPG
Fuel Consum. (Combined):	60.1MPG
Fuel Tank Capacity:	55L
Number Of Gears:	6 SPEED
Top Speed:	139MPH
Acceleration 0-100 km/h:	8s
Engine Power BHP:	167.6BHP

Vehicle Features

3 adjustable rear headrests, 3 point seatbelts on all seats, 3 spoke flat bottomed S Line multifunction steering wheel, 18" 5 arm rotor alloy wheels in titanium finish, 50/50 split folding rear seat, ABS/EBD, Active front headrests, Black cloth headlining, Black styling pack - A3, Body colour door mirrors with integral indicators, Bose sound system with 8 speakers, Chrome exhaust tailpipes, Diesel particulate filter, Door sills with aluminium inlays, Driver's information system, Driver/Front Passenger airbags, Driver and passenger side airbags, Dual zone electronic

climate control, EDL, Electric front windows, Electric operated/heated door mirrors, ESP with ASR, Front centre armrest, Front fog lights, Front seats - 'Easy Entry', Front sports seats, Heated rear window with time switch, Heat insulating glass, Height/depth adjustable steering column, Height adjustable front seats, Hill hold assist, Illuminated vanity mirrors, ISOFIX child seat preparation+airbag deactivation, Leather handbrake, Locking wheel bolts, Piano black finish inlay, Privacy glass, Rear window sun screen in parcel shelf, Rear wiper, Remote control central locking, Service interval indicator, Servotronic speed related PAS, S Line body styling, Thatcham category 1 alarm + immobiliser, Tyre mobility system, Warning triangle