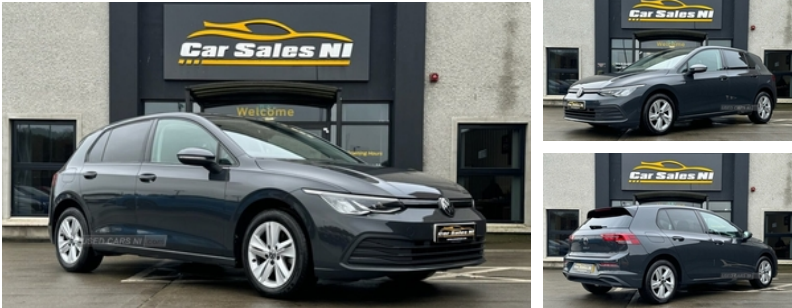




46 Beltany Road, Omagh, BT78 5NF
sales: 02882258400

Volkswagen Golf 1.5 TSI Life 5dr | Sep 2021
VIRTUAL COCKPIT, APPLE CARPLAY, 16" FACTORY FITTED ALLOYS

£13,900



2021 VOLKSWAGEN GOLF 1.5 TSI LIFE 5d 128 BHP 1 Owner from new, Covered 69k miles, finished in Grey, Key features include: 16" Factory fitted alloy wheels Parking sensors front and rear Privacy glass Virtual cockpit Multi functional steering wheel Adaptive cruise control DAB Radio / Bluetooth / Sat Nav Apple / Android CarPlay Auto hold assist Isofix child seat points And soo much more.. Call today to arrange a test drive Tailored finance packages available to suit your needs (Excludes ROI) Comprehensive warranty on all cars Trade ins welcome Delivery to North and South of Ireland if required MOT Expires: VRT: €2,957 VRT NOX: €130 Total price into the South €20,700 MOT Expires: VRT: €2,957 VRT NOX: €130 Total price into the South €20,700

Vehicle Features

3 point height adj front seatbelts + pretensioners, 3 rear head restraints, 3 rear three point seatbelts, 10 colour interior ambient lighting, 12V Socket - Centre Console, 12V Socket - Luggage Compartment, 12V socket in front centre console, 12V socket in luggage compartment, 16" Factory fitted alloy wheels, 16in Alloy Wheels - Norfolk, ABS, Adaptive Cruise Control, Adaptive cruise control ACC with speed limiter and front assist (reacting to vehicles, Airbags, Air Conditioning - 1 Zone Electronic Climate Control, Alarm with interior protection and deactivation via infotainment system, Alarm with Interior Protection with Deactivation via Infotainment System, Ambient lighting, Ambient Lighting, Anti-lock Braking System - Anti-lock Braking System with HBA - Hydraulic Brake Assist, App-Connect, Apple / Android auto CarPlay, Auto dimming rear view mirror, Automatic Coming-Leaving Home Lighting Function, Automatic headlamp activation with Coming home and Leaving home feature, Automatic Post-Collision Braking System, Bag Hooks in

Miles:	69500
Fuel Type:	PETROL
Transmission:	Manual
Colour:	Grey
Engine Size:	1498
Tax Band:	Petrol/Diesel (£190 p/a)
Body Style:	Hatchback
Insurance group:	17E
Reg:	CK71BXU

Technical Specs

DIMENSIONS	
Length:	4284mm
Width:	1789mm
Height:	1491mm
Seats:	5
Luggage Capacity (Seats Up):	380L
Gross Weight:	1800KG
Max. Loading Weight:	569KG
PERFORMANCE & ECONOMY	
Fuel Consum. (Combined):	52.3MPG
Fuel Tank Capacity:	45L
Number Of Gears:	6 SPEED
Top Speed:	133MPH
Acceleration 0-100 km/h:	9.2s
Engine Power BHP:	128.7BHP



Luggage Compartment - Left and Right, Body-Coloured Door Mirrors with Integrated Indicators, Body-Coloured Front Air Intake Fins x3 with Lower Fin Extending Across Lower Radiator Grille, Body colour bumpers, Body colour door handles, Body colour door mirrors with integrated indicators, Body Coloured Bumpers, Body Coloured Door Handles, Body colour rear roof spoiler, Car2X - Intelligent Vehicle Networking, Car2X communication, Central Locking - Remote with 2 Remote Keys, Centre console, Chrome Plated Electric Mirror Adjustment Switch Surround, Chrome Plated Electric Window Button Surrounds, Cup Holders - Front x2, DAB Radio / Bluetooth / Satellite Navigation Nav, Digital Cockpit Pro, Digital cockpit pro - 10.25" high resolution TFT dash display screen with customizable menus and information, Digital Speedo and Rev Counter - Electronic Odometer - Trip - Service Interval Display - Exterior Temperature Gauge and Fuel Gauge, Discover Navigation Infotainment System, Driver alert system, Driver Alert System - Fatigue Detection, Driver and front passenger airbag with front passenger airbag deactivation, Drivers and front passengers safety optimised head restraints, Drivers and front passengers sun visors with vanity mirrors, Drivers and Passengers Safety Optimised Head Restraints, Dusk Sensor - Automatic Driving Lights, Dynamic road sign display, eCall - Emergency call service for SOS calls to emergency response, Electrically heated and adjustable door mirrors with memory feature, Electric Windows - Front and Rear, Electronic engine immobiliser, electronic odometer, Electronic parking brake with auto hold, Electronic Parking Brake with Auto Hold Function, ESC (Electronic Stability Control), ESC - Electronic Stability Control, Extended pedestrian protection measures, exterior illuminated styling elements at the sides, exterior temperature and fuel gauge, Front and rear electric windows, Front and rear parking sensors, Front and rear passengers curtain airbag system including front side airbags, Front centre armrest with storage compartment, Front Comfort Seats with Height and Lumbar Adjustment, Front cupholders x 2, Front disc brakes, Front passenger seat lumbar adjustment, Front reading lights x 2 incorporating LED technology, Galvanised Body, Gloss Black Decorative Inserts in Dash Surround with Parking Brake, Glovebox, Grab Handles - Front - Rear x2, Heated rear windscreen, Heat insulating glass windscreen, Height-Adjustable Front Three-Point Seat Belts with Tensioners, Height adjustable passenger seat, Height and reach adjustable steering wheel, High level 3rd brake light, High Level 3rd Brake Light Incorporating LED Technology, Highway light, Interior Light Delay, ISOFIX Child Seat Preparation, Isofix child seat preparation for 2 rear child seats and front passenger seat, Keyless Start - Start-Stop Button on Centre Console, Lane assist, Leather Trimmed Gear Knob, Leather Trimmed Three-Spoke

Multifunction Steering Wheel, LED License plate illumination, LED Lighting in Door Handle Recess - Front and Rear, LED Self-Levelling Headlights with Separate LED Daytime Running Lights, Lights on Warning Buzzer, Load-Through Provision, Load Lashing Points x2 in Luggage Compartment, Luggage Compartment Cover - Stowable, Luggage Compartment Light Incorporating LED Technology - Right, Luggage compartment lighting, Maze cloth upholstery, Mobile phone interface with wireless inductive charging function, Nature cross brushed decorative inserts, Nature Cross Brushed Decorative Inserts in Dash and Front Door Panels, Parking Sensors - Front and Rear, pedestrians and cyclists), Petrol Particulate Filter, Power assisted speed sensitive steering, Power Assisted Steering - Speed-Sensitive - Electro-Mechanical Steering Rack, Predictive Pedestrian Protection, Premium USB cable in choice of either Apple or Android smartphone compatibility, Premium USB C Cable - Choice of Either Apple or Android Smartphone Compatibility, Radiator Grille - Black, Rain sensor, Rain Sensor and Automatic Dimming Rear-View Mirror, Reading Lights - Front and Rear x2 Incorporating LED Technology, Rear Centre Armrest - Folding with Cup Holders x2, Rear Diffuser - Black, Rear disc brakes, Rear fog light on one side and reversing lights on both sides, Rear lights incorporating LED technology, Rear Number Plate Lights Incorporating LED Technology, Rear Screen Wash-Wipe with Intermittent Wipe, Rear windscreen washer and wiper with interval delay, Removable luggage compartment cover, rev counter, service interval display, Soul dashboard, Speedo, Split folding backrest with centre armrest and unsplit rear seat bench, Split Folding Rear Backrests 60-40, Start/Stop function, Storage Compartment in Centre Console, Storage Compartment in Front and Rear Doors, Storm grey roof lining, Tailgate with Integrated Rear Roof Spoiler, Three Rear 3-Point Seat Belts, Three Rear Head Restraints, Touch Sensitive Shortcut Menu Items for Infotainment Display, trip, Two tone horn, Tyre Mobility Kit and Compressor, Tyre Pressure Loss Indicator, Tyre pressure monitoring system, Vanity Mirrors - Illuminated, Variable Boot Floor - Height Adjustable and Removable, Virtual cockpit, Warning Buzzer and Light for Front Seat Belts if Unfastened, Warning buzzer and light for front seatbelts unfastened, We Connect Plus Preparation, Welcome light, Windscreen Wiper with Intermittent Wipe and 4 Position Delay, Wireless app connect, Wireless Smartphone Charger, Woven fabric storage compartments in front and rear doors, XDS electronic differential lock for improved traction and handling