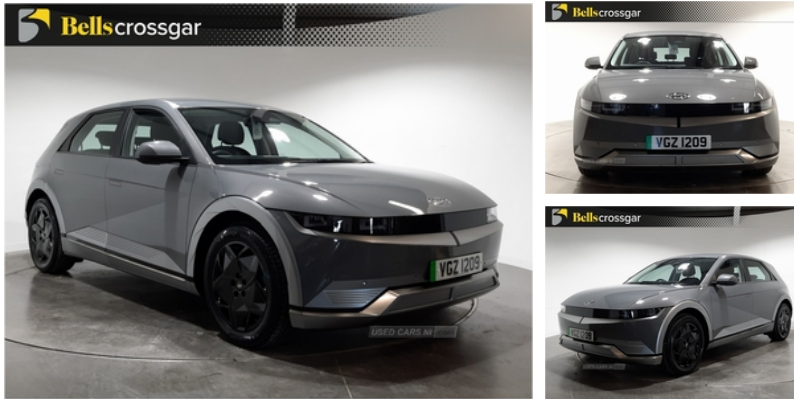


Hyundai IONIQ 5 160kW Premium 73 kWh 5dr Auto | Sep 2021

£23,695

300 MILES+ PER CHARGE | EV



Hyundai Ioniq 5 160kW Premium 73 kWh 5dr Auto

Vehicle Features

1x USB connectivity port in front, 2 front/2 rear speakers, 2 x USB ports for row 1, 3 point rear seatbelts, 4 way electrically adjustable drivers seat, 10.5 kWh 3 Phase On Board Charger, 12.3" Full TFT drivers supervision instrument cluster, 12.3" touchscreen satellite navigation and media centre, 12V power outlet in front console, 19" Alloy wheels, 19" Michelin tyres, 60/40 split folding rear seat, A/B/C Pillar trim - Cloth, ABS, Acoustic windscreen, Aero blade wiper, Alternator management system, Anthracite side sills, Anti-lock Braking System, Automatic windscreen wipers with rain sensor, Black door mirrors, Blind spot collision avoidance assist, Bluetooth connectivity with voice recognition, Body coloured door handles, CCS Combo rapid charge port (50kW), Charging cable - 7 pin type 2, Childproof rear door locks, Chrome bodyside mouldings, Cloth trim, DAB radio, Digital clock, Drive modes select (Eco, Drive modes select (Eco, Driver's electric lumbar adjustment, Driver/passenger front seatback pockets, Driver/passenger sunvisors + illuminated vanity mirrors (drivers with ticket holder), Dual LED low and high projection headlamps, Dual zone climate control air conditioning, eCall emergency system, Electric adjustable/heated/folding door mirrors, Electric front/rear windows with drivers one touch/anti-trap, Electric parking brake with auto hold function, Electrochromatic rear view mirror, Electronic stability control, Emergency 3 pin connector charging cable (ICCB), Exterior door handle - Flush, Forward Collision Avoidance Assist (FCA) - Car, Forward Collision Avoidance Assist

Miles:	25764
Fuel Type:	Electric
Transmission:	Automatic
Colour:	Grey
Tax Band:	Electric (£0 p/a)
Body Style:	Hatchback
Insurance group:	34E
Reg:	VGZ1209

Technical Specs

DIMENSIONS

Length:	4635mm
Width:	1890mm
Height:	1605mm
Seats:	5
Luggage Capacity (Seats Up):	527L
Gross Weight:	2430KG
Max. Loading Weight:	520KG

PERFORMANCE & ECONOMY

Fuel Consum. (Urban Cold):

Not AvailableMPG

Fuel Consum. (Extra Urban):

Not AvailableMPG

Fuel Consum. (Combined):

Not AvailableMPG

Fuel Tank Capacity:

Not AvailableL

Number Of Gears: 1 SPEED

Top Speed: 115MPH

Acceleration 0-100 km/h: 7.4s

(FCA) - Car, Forward collision avoidance assist junction (FCA-JX) - Turning/crossing, Front center side airbag, Front cup holders, Front head restraints with vertical and horizontal adjustment, Front passenger's seat manual height adjustment, Front passenger airbag deactivation switch, Front passenger seat isofix location point, Front thorax and pelvis + curtain airbags, Frunk - under the bonnet storage, Headlamp surround, Heated and tinted rear windscreen, Heated front seats, Heated steering wheel, Height/reach adjustable steering column, Height adjustable front seatbelts, Highway drive assist 2 (HDA), Highway drive assist 2 (HDA 2), Hill start assist control (HAC), Immobiliser, Indicator light on door mirrors, Intelligent speed limit assist (ISLA), ISOFIX child seat anchorage points attached on outer rear seats, Lane follow assist, Lane keep assist (LKA) - Line and road edge, Leather wrapped steering wheel, LED daytime running lights, LED positioning lights, LED rear combination lights, LED rear fog lights, Luggage compartment light, Luggage cover, Luggage hooks, Manual sliding rear seats, Metal paint effect interior door handles, normal and sport), normal and sport), Obsidian black interior trim, Parking - rear view monitor with parking guidance dynamic, Parking distance warning - forward and reverse, PAS, Pedestrian and Cycle, Pedestrian and Cycle, Phone connection with apple carPlay and android auto, Power Assisted Steering, Rear occupant alert, Rear roof spoiler with integrated LED brake light, Rear spoiler with integrated LED brake light, Regenerative brake shift paddles, Remote control central locking, Roof trim - Cloth, Second row outer head restraints vertical adjustment, Shift by wire - E shift, Smart cruise control with stop and go functionality, Smart electric tailgate with hand's free opening function, Smart high beam headlights, Smart key with keyless entry and engine start/stop button, Standard door scuff plate, static center console, Steering wheel audio controls, Tailgate up lift opening, Thatcham category 1 alarm, Tinted front windscreen and windows, Tinted rear windows, Trailer wiring package - Ioniq5, Tyre pressure monitoring system with individual tyre pressure warning, Tyre repair kit, Windscreen auto defog function, Wireless phone charging pad

Engine Power BHP: 214.6BHP