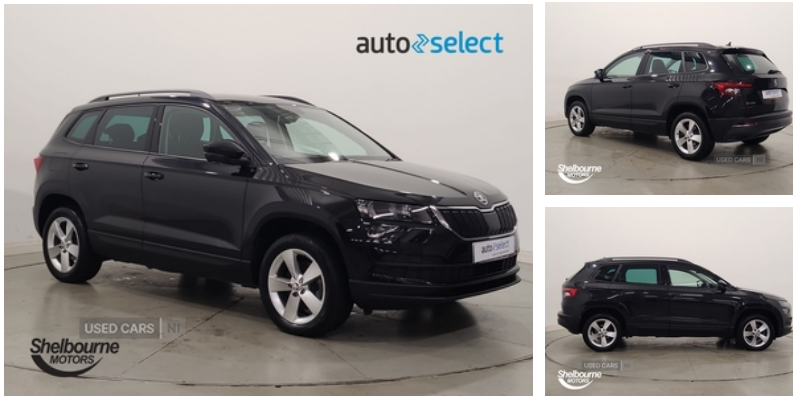


Skoda Karoq 2.0 TDI SE 5dr | 2019

£16,222



Vehicle Features

1.5 litre bottle holders in driver and front passenger door panels, 2 Folding hooks and nets in boot, 2 Front readings lights for driver and passenger, 3 rear height adjustable headrests, 4 foldable roof handles with rear coat hooks, 4 lashing points on luggage floor, 12V socket in boot, 12v socket in front centre armrest with storage compartment and rear air vents, Acoustic glass, Aero front windscreen wipers with intermittent function, Airbags - Front side, Alarm with interior monitoring, ASR, Automatic door unlocking in case of crash, Automatic fuel cut off in case of crash, Automatic headlight control system, Backrest release, back up horn and tilt sensor with safe function, Body colour door mirrors and handles, Body coloured bumpers, Cargo elements in boot, Chrome framed air vents, Chrome inner door handles, DAB radio with Bluetooth, Diesel particulate filter, Driver airbag, Driver alert system, Driver and passenger seats height adjust, Driver fatigue sensor, Driver profile selection, DSR, Dual zone climate control, EDS, Electrically adjustable heated folding and auto dimming door mirrors with boarding spots, Electric front and rear windows with child proof lock, Electro-mechanical PAS, Electronic engine immobiliser, Electronic parking brake with auto hold function, Emergency rear braking signal, ESC including ABS, Folding tables on the front seat backrests, Front assist radar scanning of the space in front of the car with automatic braking, Front seatback pockets, Full height hardboard side lining, HBA, head, Heated rear windscreen, Height/reach adjust steering wheel, Height adjustable front three point seats belts with tensioners, Hill hold control, Ice scraper, Illuminated and cooled glovebox, Illuminated luggage compartment, Isofix child seat preparation outer rear, knee and curtain, LED rear lights with high

Miles:	10488
Fuel Type:	Diesel
Transmission:	Manual
Colour:	Black
Engine Size:	1968
Tax Band:	Petrol/Diesel (£190 p/a)
Body Style:	Estate
Insurance group:	16E
Reg:	NXZ7137

Technical Specs

DIMENSIONS	
Length:	4382mm
Width:	1841mm
Height:	1603mm
Seats:	5
Luggage Capacity (Seats Up):	521L
Gross Weight:	2005KG
Max. Loading Weight:	612KG
PERFORMANCE & ECONOMY	
Fuel Consum. (Urban Cold):	49.6MPG
Fuel Consum. (Extra Urban):	68.9MPG
Fuel Consum. (Combined):	60.1MPG
Fuel Tank Capacity:	50L
Number Of Gears:	6 SPEED
Top Speed:	126MPH
Acceleration 0-100 km/h:	9s
Engine Power BHP:	147.5BHP

functionality, Light assistant (coming/leaving home/tunnel light), Manual lumbar support for front seats, MKB and traction control, MSR, Net programme in boot, Outside temperature gauge, Passenger airbag with switch-off function, Pedestrian monitor, Pen holder, Pollen filter, Privacy glass, RBS, Rear boot cover, Rear reading lights, Rear seats fixed folding and divided 60:40, Remote central locking with 2 remote folding keys, Removable LED torch in the boot, Safety reflectors on front doors, Safety vest holder, SD card slot, Seatbelt reminder signalisation and pretensioner for all seats, Service interval indicator, Start/stop system with regenerative braking, Storage box in upper central dashboard closed, Storage net on centre console passenger side, Storage on wheel cover, Sunglasses storage compartment, Sunvisors with illuminated vanity mirrors, Three point seatbelts rear, Two tone horn, Tyre pressure display, Tyre pressure monitor, Umbrella under passenger seat, USB connection