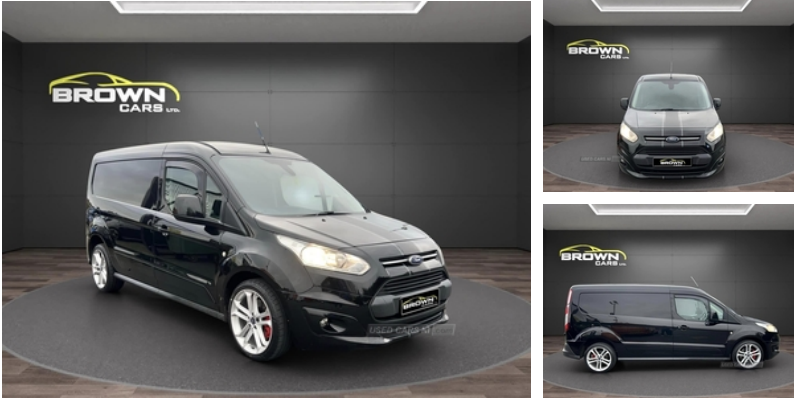




## Ford Transit Connect 1.5 TDCi 120ps Limited Van | Sep 2017

**\*\* NO VAT \*\* FINANCE AVAILABLE \*\* NO VAT \*\***



**\*\*\* FINANCE AVAILABLE \*\*\***

**\*\*\* NO VAT \*\*\***

2017 FORD TRANSIT CONNECT 1.5 TDCi 120ps Limited Van

Black with cloth seats

78,000 Miles

Bluetooth

Front electric windows

New Alloys (optional extra)

Fully Colour Coded

Immaculate Car Both Inside and Out

Finance Available

Credit and debit cards accepted

£11,250 NO vat

Contact :

Alan 07511310707 or 07907561671

### Vehicle Features

**£11,995 + VAT**

|                      |                                |
|----------------------|--------------------------------|
| <b>Miles:</b>        | 78000                          |
| <b>Fuel Type:</b>    | Diesel                         |
| <b>Transmission:</b> | Manual                         |
| <b>Colour:</b>       | Black                          |
| <b>Engine Size:</b>  | 1499                           |
| <b>CO2 Emission:</b> | 119                            |
| <b>Tax Band:</b>     | Light goods vehicle (£335 p/a) |
| <b>Body Style:</b>   | Van                            |
| <b>Reg:</b>          | SV67LCP                        |

### Technical Specs

|   |          |
|---|----------|
| <b>DIMENSIONS</b>                                     |          |
| <b>Length:</b>  | 4418mm   |
| <b>Width:</b>   | 1835mm   |
| <b>Height:</b>  | 1862mm   |
| <b>Seats:</b>   | 2        |
| <b>Luggage Capacity (Seats Up):</b><br>Not AvailableL |          |
| <b>Gross Weight:</b>                                  | 2405KG   |
| <b>PERFORMANCE &amp; ECONOMY</b>                      |          |
| <b>Fuel Consum. (Urban Cold):</b>                     | 57.7MPG  |
| <b>Fuel Consum. (Extra Urban):</b>                    | 64.2MPG  |
| <b>Fuel Consum. (Combined):</b>                       | 61.4MPG  |
| <b>Fuel Tank Capacity:</b>                            | 60L      |
| <b>Number Of Gears:</b>                               | 6 SPEED  |
| <b>Top Speed:</b>                                     | 00010MPH |

2nd remote key, 6 lashing points for securing loads, 8 way adjustable drivers seat, ABS + EBD, Automatic lights and wipers, Bluetooth with USB box, Body coloured door handles, Body coloured front bumper, Body colour side protection mouldings, Bulkhead - load through hatch, Chrome front grille, Chrome head lamp bezels, Cloth upholstery, DAB radio/CD with SYNC, Drivers airbag, Driver seatbelt reminder, Dual fold flat passenger seat with storage box, Easy fuel capless refuelling system, Electrically folding and heated door mirrors, ESP + EBA, Front/rear cupholders, Front electric windows with anti-trap and driver's one touch function, Fuel economy pack - Transit Connect, Glovebox with lid, Heated driver's seat, Heated windscreen with heated door mirrors and washer jets, Hill start assist, Immobiliser, Leather steering wheel, Load box LED lights, Overhead stowage, PAS, Plastic cargo area lining, Reach and rake adjustable steering column, Remote central locking, Reverse parking sensor, Safety autoreverse for electric windows, Steering wheel mounted audio controls, Thatcham category 1 alarm, Trip computer, Voice control system

|                          |        |
|--------------------------|--------|
| <b>Engine Power BHP:</b> | 118BHP |
|--------------------------|--------|