

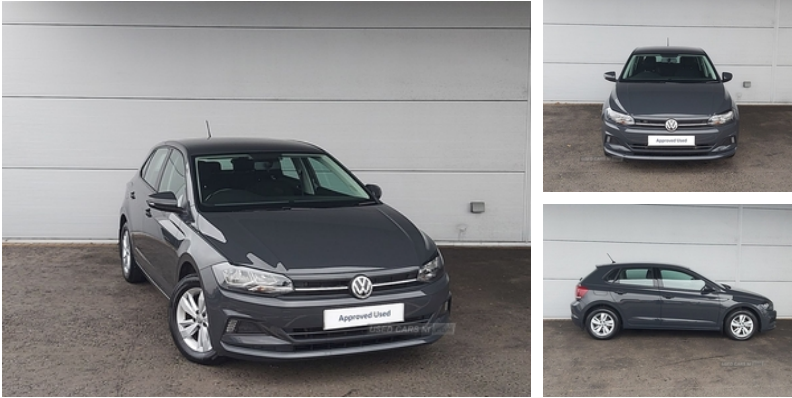


Phillips (Lisburn) Ltd

58 Saintfield Road, Lisburn Co Antrim, BT27 5BE
Sales: 02892 664354

Volkswagen Polo 1.0 TSI 95 SE 5dr | 2018
2 YEAR WARRANTY & BREAKDOWN, REAR PARK SENSORS

£12,495



Vehicle Features

2 bag hooks in luggage compartment, 2 cupholders, 3 point height adj front seatbelts + pretensioners, 3 rear head restraints, 3 spoke steering wheel, 3x3 point rear seatbelts, 6 speakers, 12V power socket in centre console, 15 Alloy Wheels, 60/40 split folding rear seat, ABS, Air Conditioning, Air vents in High gloss black, Alarm with remote central locking and interior protection, Anti-theft wheel bolts, App Connect (Apple Carplay / Android Auto), Automatic headlamp activation, Automatic Headlights (Dusk Sensor), Automatic post collision braking, aux-in, Black grille with chrome surround, Black high gloss trim, Bluetooth Phone Connection, Bluetooth Telephone preparation, Body colour bumpers, Body colour door handles, Body coloured side sills, Body colour rear spoiler, Car-Net App-Connect, Chrome plated light switch, colour touch screen, Colour Touch Screen Radio, Composition media system with radio, DAB Digital radio, Driver/front passenger airbag, Driver/front passenger seat height adjustment + underseat drawers, Driver/passenger sunvisors with illuminated vanity mirrors, Driver/Passenger whiplash optimised head restraints, Driver alert system, Dust/pollen filter, Electrically Adjustable Mirrors, Electric front windows, Electric operated/heated door mirrors, Electric Windows, Electronic engine immobiliser, ESP with EDL + ASR, Front/rear reading lights, Front and rear passengers curtain airbag system including front side airbags, Front passenger airbag deactivation, Front seat backrest storage nets, Front wash/wipe with interval delay, Full size spare wheel, Gear lever gaiter in high glass black trim surround, Glovebox, glovebox mounted CD, HBA (Hydraulic Brake Assist), Heated rear window with auto timer, Heat

Miles:	23005
Fuel Type:	Petrol
Transmission:	Manual
Colour:	Urano Grey
Engine Size:	999
CO2 Emission:	104
Tax Band:	Petrol/Diesel (£190 p/a)
Body Style:	Hatchback
Insurance group:	8E
Reg:	CSZ6460

Technical Specs

DIMENSIONS	
Length:	4053mm
Width:	1751mm
Height:	1461mm
Seats:	5
Luggage Capacity (Seats Up):	351L
Gross Weight:	1640KG
Max. Loading Weight:	495KG

PERFORMANCE & ECONOMY	
Fuel Consum. (Urban Cold):	53.3MPG
Fuel Consum. (Extra Urban):	68.9MPG
Fuel Consum. (Combined):	61.4MPG
Fuel Tank Capacity:	40L
Number Of Gears:	5 SPEED
Top Speed:	116MPH
Acceleration 0-100 km/h:	10.8s



Used Cars NI can take no responsibility for any errors which may appear in listings. Please confirm details with the seller when making an enquiry.

insulating tinted glass, Height/reach adjustable steering column, Hill hold control, Interior light with delay, Isofix Preparation 2 Rear child seats, Jack and tool kit, LED daytime running lights, LED rear number plate lights, Luggage compartment cover, Luggage compartment lighting, Multi-function Steering Wheel, Multifunction colour display, Multifunction leather steering wheel with leather gear knob/handbrake grip, multimedia interface, PAS - speed related, Rear electric windows, Rear windscreen washer and wiper with interval delay, Remote Central Locking, removable, SD card, Service interval indicator, Stop/Start Technology, Storage compartment in front doors, Storage compartment in rear doors, Storage compartment under front seats, Trip computer, Two tone horn, Tyre Pressure Loss Indicator, Tyre pressure monitoring system, USB, Variable boot floor, Warning buzzer and light for front seatbelts unfastened

Engine Power BHP: 93.9BHP