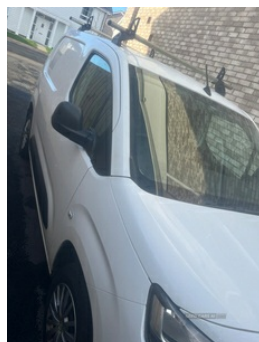


Citroen Berlingo 1.5 BlueHDi 650Kg Enterprise 75ps | Feb 2020

NO VAT



2020 Citroen Berlingo 1.5 BlueHDi 650Kg Enterprise 75ps

NO VAT

Apple car play

Roof racks

Call or text 07541720081

Vehicle Features

6 floor mounted load securing rings, 6 way adjustable driver seat with lumbar support and under seat storage, Apple Carplay/Android Auto, Automatic electronic parking brake, Citroen connect box with emergency and assistance system, Cup holders for driver and passenger on either side of the dashboard, Curitiba cloth upholstery, Dashboard mounted central locking push button and auto locking above 7mph, Door opening warning and audible lights on warning, Drivers airbag, Driver seatbelt unfastened warning, EBA and EBFD, Electrically adjustable door mirrors, Electrically folding door mirrors with temperature sensor, Electric front windows with one touch operation, Electronic Stability Control and ABS with hill start assist, Extensio modular folding passenger bench seat with pivoting writing table, Front door pockets with bottle holder, Front fog lights, Full size steel spare wheel, Hard plastic floor protection in cabin, High level third brake light, load through

£10,500 O.N.O

Miles:	61684
Fuel Type:	Diesel
Transmission:	MANUAL
Colour:	White
Engine Size:	1500
CO2 Emission:	112
Tax Band:	Light goods vehicle (£335 p/a)
Body Style:	Van
Reg:	Lc69gvo

Technical Specs

DIMENSIONS	
Length:	4403mm
Width:	1848mm
Height:	1840mm
Seats:	3

Luggage Capacity (Seats Up):

Not AvailableL

Gross Weight:	2000KG
----------------------	--------

PERFORMANCE & ECONOMY

Fuel Consum. (Urban Cold):	30.7MPG
Fuel Consum. (Extra Urban):	52.3MPG
Fuel Consum. (Combined):	51.4MPG
Fuel Tank Capacity:	50L
Number Of Gears:	5 SPEED
Top Speed:	94MPH
Acceleration 0-100 km/h:	15.9s
Engine Power BHP:	75.1BHP

hatch and load protection cover, Lockable fuel cap, Multi-function trip computer, Nearside side sliding door, One touch open on drivers window, Overhead storage shelf in cabin, Perimetric and volumetric thatcham category 1 approved alarm with tilt sensor, Power door locks, Remote central locking with deadlocking, Rev counter with maintenance and gear efficiency indicators (GEI), selective cab and load area locking via 3 button plip remote control key, storage under central seat, Thatcham approved rolling code transponder immobiliser, Topbox storage compartment, Two speed intermittent front wipers, Tyre pressure monitor, Visible VIN at windscreen base