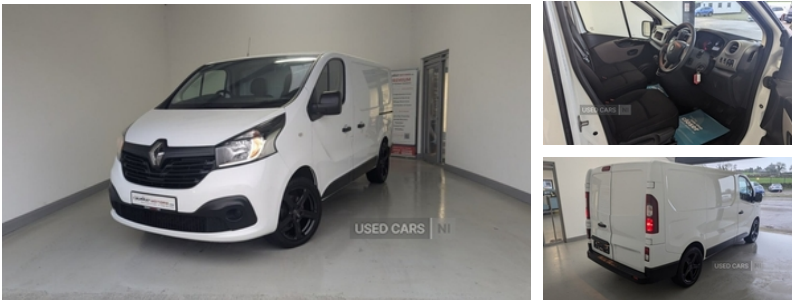


## Renault Trafic SL27 dCi 120 Business+ Van | Aug 2019

**£10,495** + VAT



PLY LINED, RADIO, CENTRAL DOOR LOCKING, FITTED WITH 19" ALLOYS AN OPTIONAL EXTRA COMES FULLY SERVICED WITH 6 MONTHS WARRANTY Viewing by appointment. View all our stock and apply for finance

### Vehicle Features

3 point height adjustable seatbelts with pretensioners and load limiter, 4 cupholders, 4 disc brakes, 12V power socket in front, 16 load anchorage points, 20L AdBlue tank, 80 litre fuel tank, ABS with EBD (Electronic Brake force Distribution), Alarm, Black door mirrors, Body coloured front bumper + tail light column and door rail, Closed glovebox, Driver's armrest, Drivers airbag, Driver seat lumbar support, Eco mode function, Electronic immobiliser, ESC (Electronic Stability Control) with Hill Start Assist and Grip Xtend, Full size steel spare wheel, Gearshift indicator, Glovebox, Grip control, Height adjustable drivers seat, Muscade cloth upholstery, Outside temperature gauge, Pearlescent paint, Reach and rake adjustable steering column, Roof bar fixings, Trip computer, Underseat storage compartment, Wide view mirror

<b>Miles:</b>	79000
<b>Fuel Type:</b>	DIESEL
<b>Transmission:</b>	Manual
<b>Colour:</b>	White
<b>Engine Size:</b>	1598
<b>CO2 Emission:</b>	170
<b>Tax Band:</b>	Light goods vehicle (£335 p/a)
<b>Body Style:</b>	Van
<b>Reg:</b>	SF19DDR

### Technical Specs

<b>DIMENSIONS</b>	
<b>Length:</b>	4999mm
<b>Width:</b>	2283mm
<b>Height:</b>	1971mm
<b>Seats:</b>	3
<b>Luggage Capacity (Seats Up):</b>	
Not AvailableL	
<b>Gross Weight:</b>	2800KG
<b>PERFORMANCE &amp; ECONOMY</b>	
<b>Fuel Consum. (Urban Cold):</b>	36.2MPG
<b>Fuel Consum. (Extra Urban):</b>	49.6MPG
<b>Fuel Consum. (Combined):</b>	43.5MPG
<b>Fuel Tank Capacity:</b>	80L
<b>Number Of Gears:</b>	6 SPEED
<b>Top Speed:</b>	103MPH
<b>Acceleration 0-100 km/h:</b>	12.6s
<b>Engine Power BHP:</b>	118BHP

