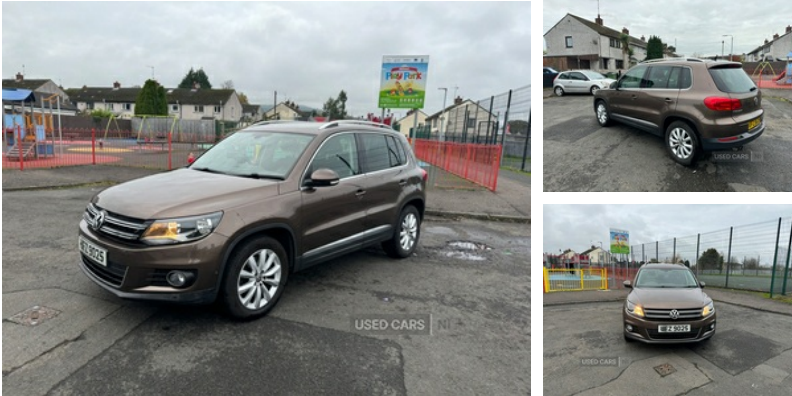


3 milltown crescent, lisburn, BT28 3TX  
07798692558 | 07798692558

## Volkswagen Tiguan 2.0 TDi BlueMotion Tech Match 5dr [2WD] | Nov 2014

**£7,800** O.N.O

### LOW MILES



2014 Volkswagen Tiguan 2.0 TDi CR with only 43000 miles  
central locking power steering 2x keys MOT'D to may 2025

### Vehicle Features

'Anthracite-Metallic' interior trim, 2 Zone electronic climate control with automatic air recirculation, 3 rear 3 point seatbelts, 3 rear headrests, 3 spoke multi-function leather steering wheel and gearknob, 5 boot load lashing points, 12V socket in luggage compartment, 18" front module, 60/40 split folding rear seat, ABS+EBD+Brake assist, Alarm with interior protection, Auto dimming rear view mirror/rain sensor, Automatic coming home lighting, Bluetooth Telephone preparation, Body colour door handles, Body colour door mirrors with integral indicators, Body coloured bumpers, Chrome roof rails, Chrome side window surrounds, Chrome trimmed front air intake surrounds, Cornering front fog lights, Curtain airbags, DAB Digital radio, Driver/Front Passenger airbags, Driver/Passenger whiplash optimised head restraints, Dusk sensor + auto driving lights, Elec heated + adjust door mirrors, Electronic engine immobiliser, Electronic parking brake with auto hold, ESP with EDL + ASR, Fatigue detection system, Foldable front passenger seat backrest, Front and rear electric windows, Front centre armrest with storage + rear 2 air vents + cupholders, Front cupholders x 2, Front footwell illumination, Front reading lights, Front seatback folding tables, Front seat back storage pockets, Front side airbags, Front sports seats, Green tinted heat insulating glass, Heated rear window, Heat insulated tinted glass from B pillar back, Height/reach adjust steering wheel, Height adjustable front 3 point seatbelts + pretensioners, Illuminated vanity mirrors, Interior light with delay, Isofix Preparation 2 Rear child seats,

|                         |                       |
|-------------------------|-----------------------|
| <b>Miles:</b>           | 44000                 |
| <b>Fuel Type:</b>       | Diesel                |
| <b>Transmission:</b>    | Manual                |
| <b>Colour:</b>          | Brown                 |
| <b>Engine Size:</b>     | 1968                  |
| <b>CO2 Emission:</b>    | 138                   |
| <b>Tax Band:</b>        | E (£190 p/a)          |
| <b>Body Style:</b>      | Sport utility vehicle |
| <b>Insurance group:</b> | 18E                   |
| <b>Reg:</b>             | Ufz9025               |

### Technical Specs

|                                     |        |
|-------------------------------------|--------|
| <b>DIMENSIONS</b>                   |        |
| <b>Length:</b>                      | 4426mm |
| <b>Width:</b>                       | 1809mm |
| <b>Height:</b>                      | 1703mm |
| <b>Seats:</b>                       | 5      |
| <b>Luggage Capacity (Seats Up):</b> | 470L   |
| <b>Gross Weight:</b>                | 2080KG |
| <b>Max. Loading Weight:</b>         | 614KG  |

|                                    |          |
|------------------------------------|----------|
| <b>PERFORMANCE &amp; ECONOMY</b>   |          |
| <b>Fuel Consum. (Urban Cold):</b>  | 45.6MPG  |
| <b>Fuel Consum. (Extra Urban):</b> | 60.1MPG  |
| <b>Fuel Consum. (Combined):</b>    | 53.3MPG  |
| <b>Fuel Tank Capacity:</b>         | 64L      |
| <b>Number Of Gears:</b>            | 6 SPEED  |
| <b>Top Speed:</b>                  | 120MPH   |
| <b>Acceleration 0-100 km/h:</b>    | 10.2s    |
| <b>Engine Power BHP:</b>           | 138.1BHP |



Lights on warning, Load through provision with 2 cupholders when folded, Lockable cooled glovebox, Luggage compartment lighting, MDI with USB/iPod connection cables, Park assist with front and rear parking sensors and optical display, Passenger airbag deactivate switch, Passenger seat height adjuster, Passenger seat lumbar adjust, Rear windscreen washer and wiper with interval delay, Remote central locking with 2 remote folding keys, Removable luggage cover, Seatbelt warning lamp and buzzer, Service interval indicator, Silver decorative inserts in door panels, Speed sensitive power steering, Steel finish air vent surround, Steel space saver spare wheel, Storage compartment in driver's door, Storage compartment in passenger's door, Storage compartment in roof console, Storage tray + 12V socket in centre console, Storage tray on dashboard, Storage under front passenger seat, Warning triangle, White adjustable panel illumination, Windscreen wipers/ intermittent wipe + 4 position delay