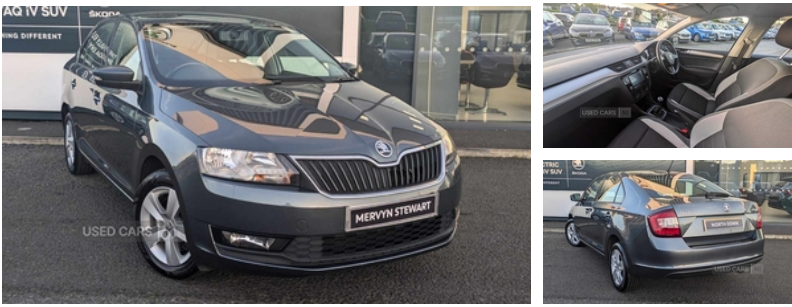


Skoda Rapid 1.0 TSI 110 SE 5dr | Jul 2018

£6,295



Vehicle Features

3x3 point rear seatbelts, 6 speakers, 12V socket in centre console, 60/40 split fold rear seat back, ABS+ASR+MSR, Aero wiper + intermittent function, Alarm/immobiliser, Bluetooth system, Body colour bumpers, Body colour door handles, Body colour door mirrors, Centre console with storage/cupholders, Cloth upholstery, Curtain airbags, Driver's sun visor with vanity mirror, Driver and passenger airbags, Driver seatbelt warning indicator, Driver seat height adjust, Electrically adjustable and heated door mirrors, Electric front windows, ESP, Front cupholders, Front fog lights, Front seatback pocket, Fuel cut off safety device, Glovebox, HBA (Hydraulic Brake Assist), Heated rear window, Height/reach adjust steering wheel, Height adjustable front headrests, Height adjustable headlamps, Height adjustable rear head restraints, Interior light, Isofix child seat preparation, Leather gaiter, Leather handbrake lever, LED daytime running lights, Luggage compartment lighting, Multi device interface, Outside temperature gauge, PAS, Passenger airbag deactivate switch, Passenger sunvisor with vanity mirror, Predictive pedestrian protection, Radiator grille with chrome surround, Radio, Rear electric windows, Rear wash/wipe, Remote control central locking, SD card slot, Service indicator, Side airbags, Storage compartment in rear doors, Sunglasses storage, Ticket holder, Tinted glass, Traction control, Trip computer, Tyre pressure monitor, Umbrella under front passenger seat

Miles:	72576
Fuel Type:	PETROL
Transmission:	Manual
Colour:	Grey
Engine Size:	999
CO2 Emission:	106
Tax Band:	Petrol/Diesel (£190 p/a)
Body Style:	Hatchback
Insurance group:	17E
Reg:	GC18AOJ

Technical Specs

DIMENSIONS	
Length:	4483mm
Width:	1706mm
Height:	1461mm
Seats:	5
Luggage Capacity (Seats Up):	550L
Gross Weight:	1650KG
Max. Loading Weight:	535KG

PERFORMANCE & ECONOMY	
Fuel Consum. (Urban Cold):	51.4MPG
Fuel Consum. (Extra Urban):	70.6MPG
Fuel Consum. (Combined):	61.4MPG
Fuel Tank Capacity:	55L
Number Of Gears:	6 SPEED
Top Speed:	124MPH
Acceleration 0-100 km/h:	9.8s
Engine Power BHP:	108.6BHP

