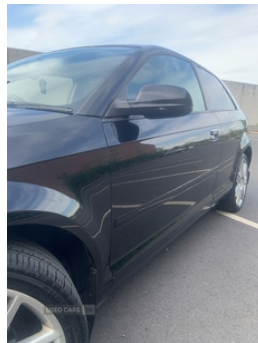


**Audi A3 1.6 TDI 3dr [99 g/km] | Oct 2010**  
**RECENT CLEAN MOT**

**£2,550** O.N.O



2010 Audi A3 sport 1.6tdi -Cheap to insure -Free road tax -MOT'd as of 8/10/24 (no advisories) -Just been serviced + more service history available -Tbelt and Wpump recently done at 123k -132k miles -Decent spec: heated mirrors, drls, parking sensors, multi func steering wheel -Standard bar Genuine 18" s3 alloys and Led bulbs (can come with standard 16" too) -Will come on plate tnz3790 -Had refurbished steering rack, hubs and driveshafts in the last few months, currently sorting new break pads also Plenty more pics PM for more or any questions, new car bought so keen to sell. Texts preferred.

**Vehicle Features**

3 adjustable rear headrests, 3 point seatbelts on all seats, 15" 7 arm design alloy wheels, 50/50 split folding rear seat, ABS/EBD, Active front headrests, Body colour door mirrors with integral indicators, Diesel particulate filter, Driver/Front Passenger airbags, Driver and passenger side airbags, EDL, Electric front windows, Electric operated/heated door mirrors, ESP with ASR, Frequency cloth upholstery, Front/rear floor mats, Front seats - 'Easy Entry', Heated rear window with time switch, Heat insulating glass, Height/depth adjustable steering column, Height adjustable front seats, ISOFIX child seat preparation+airbag deactivation, Locking wheel bolts, Rear

<b>Miles:</b>	132000
<b>Fuel Type:</b>	Diesel
<b>Transmission:</b>	Manual
<b>Colour:</b>	Black
<b>Engine Size:</b>	1598
<b>CO2 Emission:</b>	99
<b>Tax Band:</b>	A (£0 p/a)
<b>Body Style:</b>	Hatchback
<b>Insurance group:</b>	18E
<b>Reg:</b>	DN04JAY

**Technical Specs**

<b>DIMENSIONS</b>	
<b>Length:</b>	4238mm
<b>Width:</b>	1765mm
<b>Height:</b>	1421mm
<b>Seats:</b>	5
<b>Luggage Capacity (Seats Up):</b>	350L
<b>Gross Weight:</b>	1835KG
<b>Max. Loading Weight:</b>	560KG

<b>PERFORMANCE &amp; ECONOMY</b>	
<b>Fuel Consum. (Urban Cold):</b>	60.1MPG
<b>Fuel Consum. (Extra Urban):</b>	85.6MPG
<b>Fuel Consum. (Combined):</b>	74.3MPG
<b>Fuel Tank Capacity:</b>	55L
<b>Number Of Gears:</b>	5 SPEED
<b>Top Speed:</b>	121MPH
<b>Acceleration 0-100 km/h:</b>	11.4s
<b>Engine Power BHP:</b>	103.3BHP

wiper, Remote control central locking, Service interval indicator,  
Servotronic speed related PAS, Thatcham category 1 alarm +  
immobiliser, Tyre mobility system