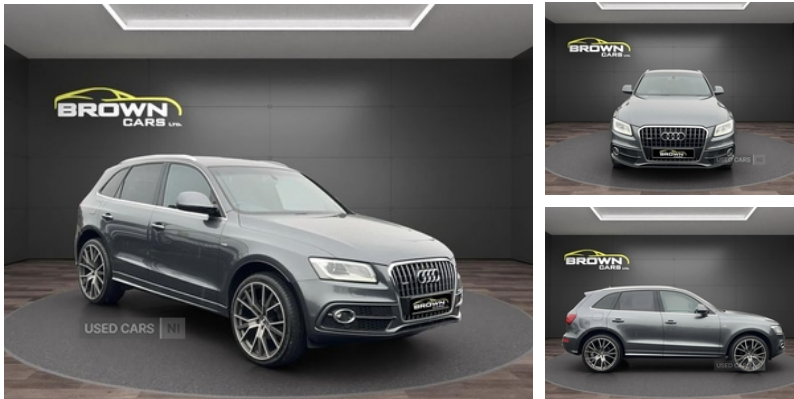




Audi Q5 2.0 TDI [150] Quattro S Line Plus 5dr | Mar 2015

£12,995

*** FINANCE AVAILABLE ***



Miles:	71000
Fuel Type:	Diesel
Transmission:	Manual
Colour:	Grey
Engine Size:	1968
CO2 Emission:	154
Tax Band:	G (£255 p/a)
Body Style:	Sport utility vehicle
Insurance group:	22E
Reg:	SJ15VFC

****Finance Available****

2015 Audi Q5 2.0 TDI Quattro S Line Plus S Tronic

Grey With Leather Seats

71,000 Miles

Sat Nav

Heated seats

Flat bottom steering wheel

LED running lights

Xenon headlights

Front centre armrest

Climate control

Front fog lights

Front and rear electric windows

Electrically adjustable and heated door mirrors

Rear privacy glass

Remote central locking

Body colour bumpers

Alloys Optional Extra

Low Deposit Option also Available

Finance Available

Credit and debit cards accepted

Technical Specs

DIMENSIONS

Length:	4629mm
Width:	1898mm
Height:	Not Availablemm
Seats:	5
Luggage Capacity (Seats Up):	540L
Gross Weight:	2365KG
Max. Loading Weight:	610KG

PERFORMANCE & ECONOMY

Fuel Consum. (Urban Cold):	41.5MPG
Fuel Consum. (Extra Urban):	52.3MPG
Fuel Consum. (Combined):	47.9MPG
Fuel Tank Capacity:	75L



.
. .
****Finance Available****

.
Immaculate Car Both Inside and Out

.
£12,995

.
LOW DEPOSIT AVAILABLE

.
For Any Further Information, inquiries or to arrange a viewing

.
Contact : Alan 07511310707 OR 07907561671

Number Of Gears: 6 SPEED

Top Speed: 118MPH

Acceleration 0-100 km/h: 10.8s

Engine Power BHP: 147.5BHP

Vehicle Features

3 point seatbelts on all seats, 3 rear headrests, 3 zone climate control, ABS, Acoustic windscreen, Aluminium sill plates, Aluminium window surround, Audi music interface, Auto dimming rear view mirror, Body colour bumpers, Chrome door handles and boot strip, Chrome exhaust tailpipe, Chrome fog light surround, Concert radio/single CD player with MP3 facility, DAB Digital radio, Diesel particulate filter, Driver and passenger airbags, Driver and passenger side airbags, Driver information centre with colour display in instrument panel, Electrically adjustable and heated door mirrors, Electric pack A - Transporter, Electromechanical parking brake, ESP, First aid kit, Front and rear electric windows, Front centre armrest with 12v socket, Front fog lights, Front passenger airbag deactivation, Front sports seats including electric lumbar support, Headlight washers, Height adjustable driver's seat, High gloss black grille, Hill descent control, Isofix front passenger and rear seat preparation, Light and rain sensor for auto activation of lights and windscreen wipers, Locking wheel bolts, MMI - Multi Media Interface control system, Platinum grey rear diffuser, Privacy glass, Reach + rake adjustable steering column, Rear acoustic parking system, Rear spoiler, Rear wiper, Remote central locking, Remote electric boot opening/closing, Service interval indicator, Servotronic speed related PAS, S Line body styling, Split fold rear seat, Thatcham category 1 alarm + immobiliser, Towbar preparation, Traction control, Tyre pressure monitor, Tyre repair kit, Warning triangle, Xenon headlights with LED running lights