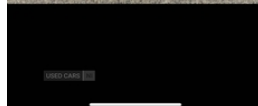
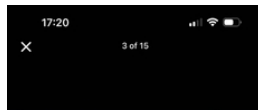
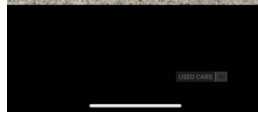
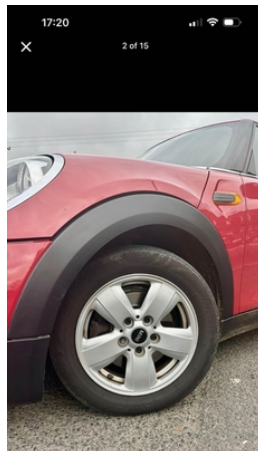


MINI Hatch 1.2 One 5dr | Dec 2015

£4,400 O.N.O



Miles:	90000
Fuel Type:	Petrol
Transmission:	Manual
Colour:	Red
Engine Size:	1198
CO2 Emission:	112
Tax Band:	C (£35 p/a)
Body Style:	Hatchback
Insurance group:	12E
Reg:	HX65NGY

Technical Specs

DIMENSIONS	
Length:	3982mm
Width:	1727mm
Height:	1425mm
Seats:	5
Luggage Capacity (Seats Up):	278L
Gross Weight:	1680KG
Max. Loading Weight:	530KG

PERFORMANCE & ECONOMY	
Fuel Consum. (Urban Cold):	47.9MPG
Fuel Consum. (Extra Urban):	67.3MPG
Fuel Consum. (Combined):	58.9MPG
Fuel Tank Capacity:	40L
Number Of Gears:	6 SPEED
Top Speed:	119MPH
Acceleration 0-100 km/h:	10.1s
Engine Power BHP:	100.6BHP

Late 2015 Mini One Very well looked after car never had any bother, □ MOT February 25 □ 15 "alloy wheels □ 90k miles □ ambient lighting □ perfect driving car can't be faulted Test drive welcome £4400 ono Car or text 07706 125154

Vehicle Features

2 rear head restraints, 2 speed wipers+intermittent wipe, 3 point seatbelts, 4 boot load lashing points, 4 way manually adjustable passenger seat with height, 6-way manually adjustable driver's seat, ABS/EBD, Acoustic seat-belt warning, Active carbon filter, Air recirculation system, Anti dazzle mirror, Anti trapping/one touch open close front windows, ASC+T, Auxiliary input socket,

Auxiliary socket in centre console storage compartment, Black tailgate handle, Body coloured bumpers, Body colour roof, Brake fluid level warning light, Brake pad wear indicator warning light, CBC - (Cornering brake control), Centre console storage, Chrome bezels around rear lights and headlights, Chrome door handles, Chrome exhaust tailpipe, Chrome plated radiator grille, Chrome plated trim on bottom edge of window, Chrome strip on lower grille, Crash Sensor - activates hazard/interior lighting + unlocks doors, DAB digital radio module, Drive away door locking, Driver's seat height adjuster, Driver/front passenger side airbags, Driver/passenger sunvisors, Driver and passenger airbags, DSC - Dynamic Stability Control, DTC - Dynamic traction control, Electrically adjustable door mirrors, Electric front windows, Electronic differential lock, Exterior temperature gauge, Follow me home headlights, Front and rear cupholders, Front head restraints, Front interior light, Front passenger grab handle, Fuel cut off safety device, Gear/selector and handbrake in artificial leather, Green tinted heat insulating glass, Head airbags, Heated door mirrors/heated windscreen washers, Heated rear window with auto timer, Hill start assist, Internal chrome door handles, Isofix child seat preparation, Lockable glove box with light, Locking wheel bolts, Luggage compartment lighting, Metal look door sill finishers, Oil level indicator, On board computer, Passenger airbag deactivation system, Push button starter, reach, Reach + rake adjustable steering column, Rear grab handles, Rear storage trays, Rear wiper, Remote central locking/doors+fuel cap+tailgate, Roof spoiler in roof colour, Seatbelt pretensioners, Second remote key, Service interval indicator, Servotronic PAS, Split folding rear seats, Storage compartments in doors, Thatcham category 1 alarm + immobiliser, till and backrest, Toolkit in luggage compartment, Tyre pressure warning, Vanity mirrors, Ventilated front disc brakes