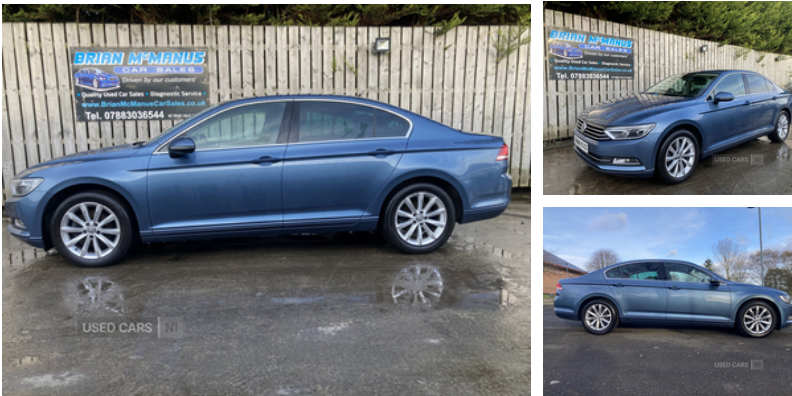


**Volkswagen Passat 1.6 TDI SE Business 4dr**  
**| Feb 2017****£8,650**

2016 Vw Passat 1.6Tdi Business Edition 120Bhp, Nice bright looking Passat in Alcopoco Blue, car has full service history and has just been serviced by ourselves Timing belt and water pump have also been done, benefits from £20 road tax as low emissions, Well Spec'd Business Edition with refinements such as: Bluetooth Multifunctional steering wheel Remote locking Air con On board computer DAB Electric windows Electric mirrors Cruise Control Front and Rear Parking sensors Spare key Push Button Start Finance available , Get in touch for a finance quote to suit your needs, Hpi Clear , safety checked ,3 months warranty £8650 83k Call Brian on 07883036544 to arrange a viewing View all our stock at on our website

**Vehicle Features**

3 rear 3 point seatbelts, 3 rear head restraints, 3 spoke multi-function leather steering wheel, 4 boot load lashing points, 12V socket in luggage compartment, 60/40 split folding rear seat, ABS, Adaptive cruise control, Adjustable Steering Column, Airbags (side/lateral etc), Airbags (side/lateral etc), Airbags (side/lateral etc), Air Conditioning - front, Alarm with interior protection, Alloy Wheels, All Round Electric Windows, Analogue clock, Anti-lock Brakes, Auto dimming driver's door mirror, Auto dimming rear view mirror, Automatic activation of hazard warning lights, Automatic post collision braking, Auxiliary socket for external device, Body colour bumpers, Body colour door handles, Body coloured door mirrors, brake assist and EBD, CD Equipment inc Multimedia, Central Locking, Chrome air vent and instrument surround, Chrome fog light surround, Chrome louvres in grille, Chrome side window surrounds, Chrome surround for air intake, Coming/leaving home lighting function, Composition

<b>Miles:</b>	83569
<b>Fuel Type:</b>	Diesel
<b>Transmission:</b>	Manual
<b>Colour:</b>	Blue
<b>Engine Size:</b>	1598
<b>CO2 Emission:</b>	105
<b>Tax Band:</b>	B (£20 p/a)
<b>Body Style:</b>	Saloon
<b>Insurance group:</b>	12E
<b>Reg:</b>	SB66EVD

**Technical Specs****DIMENSIONS**

<b>Length:</b>	4767mm
<b>Width:</b>	1832mm
<b>Height:</b>	1456mm
<b>Seats:</b>	5
<b>Luggage Capacity (Seats Up):</b>	586L
<b>Gross Weight:</b>	1990KG
<b>Max. Loading Weight:</b>	621KG

**PERFORMANCE & ECONOMY**

<b>Fuel Consum. (Urban Cold):</b>	60.1MPG
<b>Fuel Consum. (Extra Urban):</b>	78.5MPG
<b>Fuel Consum. (Combined):</b>	70.6MPG
<b>Fuel Tank Capacity:</b>	59L
<b>Number Of Gears:</b>	6 SPEED
<b>Top Speed:</b>	128MPH
<b>Acceleration 0-100 km/h:</b>	10.8s
<b>Engine Power BHP:</b>	118BHP

media system with Radio/CD/MP3, cooled glovebox, Cruise Control, Curtain airbags, DAB Digital radio, DAB Radio - Digital Audio Broadcasting, Diesel particulate filter, Door/boot open warning light, Driver's cushion tilt adjust, Driver's Seat Adjustment (manual), Driver/Front Passenger airbags, Driver/Front passenger WOKS head restraints, Driver Airbag, Driver alert system, Drivers knee airbag, Electrically adjustable and heated door mirrors, Electric Door Mirrors, Electric Folding Door Mirrors, Electric front windows, Electric rear windows, Electronic engine immobiliser, Electronic parking brake with auto hold, Entry lights on doors, ESP with EDL + ASR, Exterior temperature gauge with frost alarm, First aid kit, Front + rear carpet mats, Front + Rear Parking Sensors, Front and rear interior lighting with delay and dimming function, Front assist including city emergency braking, Front centre armrest with 12v socket, Front centre armrest with storage compartment, Front comfort seats, Front cupholders x2 with covers, Front door pocket bottle holders, Front Foglights, Front fog lights with static cornering function, Front side airbags, Headlight range control, Heated rear window, Height/reach adjust steering wheel, Height adjustable front 3 point seatbelts + pretensioners, High Level Brake Light, Hill hold function, illuminated, Immobiliser, Keyless Start, Leather gearknob, Load through provision, Lockable, Low washer fluid warning light, Luggage compartment lighting, Mats, MDI with USB/iPod connection cables, Mechanical Warranty, Mirror pack - Passat, Multifunction computer, Outside Temp Gauge, Passenger Airbag, Passenger airbag deactivation system, Power Steering, Pre crash system, Radio Equipment inc Multimedia, Radio Equipment inc Multimedia, Rain sensor, Rear centre armrest with cupholder and storage, Rear Head Restraints, Rear side airbags, Remote boot release, Remote central locking with 2 remote folding keys, Remote fuel flap release, Safety and Driver Assistance, Safety and Driver Assistance, Satellite Navigation, SD card slot, Service interval indicator, Solid Paint, Speed limiter, Speed sensitive power steering, Split Rear Seat/Thru Load Facility, Start/Stop Engine Technology, Storage compartment in driver's door, Storage compartment in passenger's door, Storage compartment in rear doors, Storage compartment in roof console, Storage pockets in backrests of front seats, Sunvisors with illuminated vanity mirrors, Suspension, Tachograph, Telephone Equipment, Traction Control, Upholstery (all except full leather), Variable boot floor, Vehicle Security, Warning buzzer and light for front seatbelts unfastened, Warning triangle, White instrument dials, Windscreen wipers/ intermittent wipe + 4 position delay