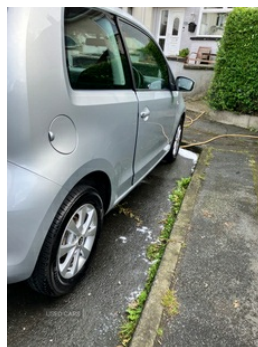


Skoda Citigo 1.0 MPI SE 3dr | Jan 2015
MOT JULY 2025, £ 20 TAX, INS. GROUP 3E

£5,200



Skoda Citigo 1.0L petrol Daily used car
Running no faults
MOT until July 2025
Cheap tax £20 a year, Group 3e insurance
60+ mpg town driving, £40 fills the tank.
Recent new tyres and brakes
Timing done 78k
Original citigo mats
Originally from Skoda in Conlign, family owned from new before I purchased.

Overall in very good condition little signs of wear inside and out.
A very well kept and maintained car. Low insurance and tax ideal for new or young drivers or singletons needing an economical town car. Parts and maintenance dirt cheap.

Vehicle Features

3 point height adj front seatbelts + pretensioners, 12V accessory power point in centre console, 60/40 split folding rear seat, ABS, Air conditioning, Body colour bumpers, Body colour door mirrors and handles, Chrome grille surround, Cloth upholstery, Daytime running lights, Delay courtesy light function, Directional air vents

Miles:	82000
Fuel Type:	Petrol
Transmission:	Manual
Colour:	Silver
Engine Size:	999
CO2 Emission:	105
Tax Band:	B (£20 p/a)
Body Style:	Hatchback
Insurance group:	1E
Reg:	Jgz2286

Technical Specs

DIMENSIONS	
Length:	3563mm
Width:	1641mm
Height:	1478mm
Seats:	4
Luggage Capacity (Seats Up):	251L
Gross Weight:	1290KG
Max. Loading Weight:	436KG

PERFORMANCE & ECONOMY	
Fuel Consum. (Urban Cold):	50.4MPG
Fuel Consum. (Extra Urban):	72.4MPG
Fuel Consum. (Combined):	62.8MPG
Fuel Tank Capacity:	35L
Number Of Gears:	5 SPEED
Top Speed:	99MPH
Acceleration 0-100 km/h:	14.4s
Engine Power BHP:	59BHP

for side windows, Driver's sunvisor with ticket holder, Driver/front passenger side airbags, Driver and passenger airbags, Driver seat height adjust, Electric front windows, Electronic engine immobiliser, ESP, Folding rear seats, Front head restraints, Glovebox, Heated rear window, Height adjustable rear head restraints, Height adjustable steering wheel, Isofix Preparation 2 Rear child seats, Locking fuel filler cap, Passenger sunvisor with vanity mirror, Radio/MP3 CD player with aux input, Rear wiper, Remote control central locking+folding key, Rev counter, Seatbelt warning lamp and buzzer, Service interval indicator, Speed sensitive power steering, Two 3 point rear seatbelts, Two tone horn, Tyre pressure monitor