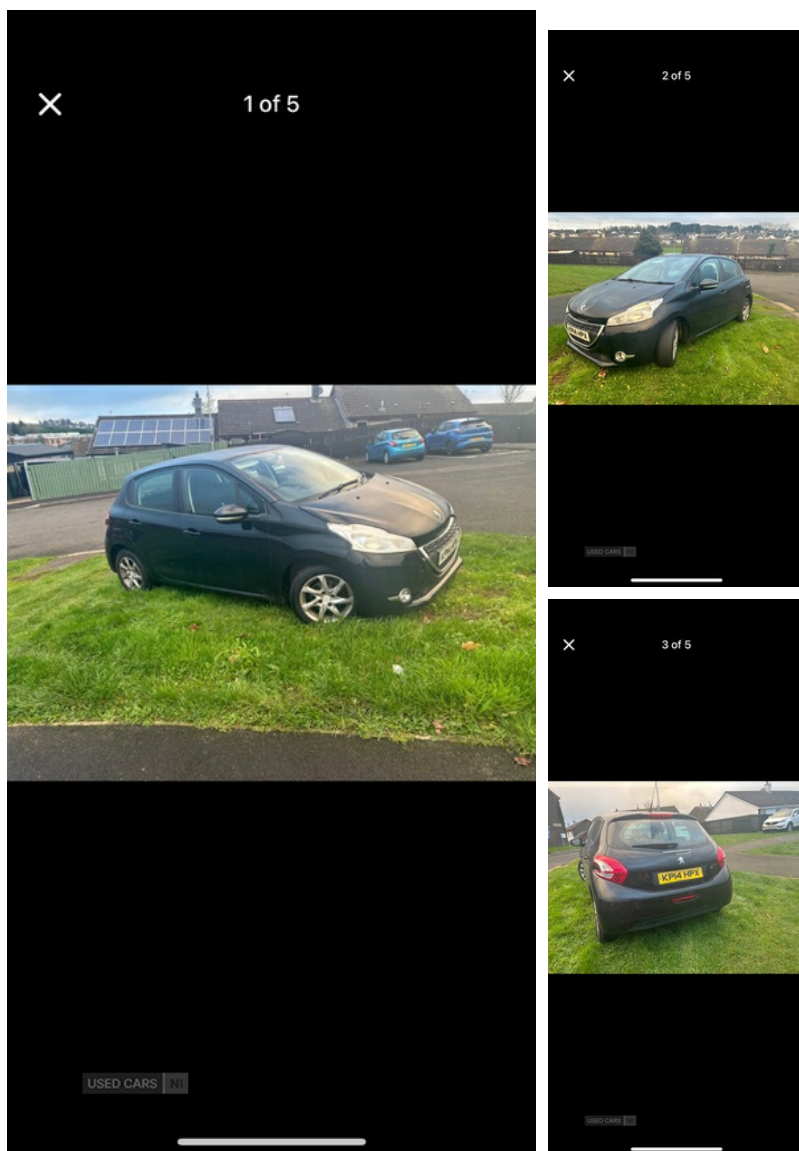


Peugeot 208 1.6 e-HDi Active 5dr | May 2014

£2,700



Peugeot 208

1.6hdi

2014

112000 miles

Mot sept 2025

£20 tax

Great driving wee car with no faults at all

Ready for new owner

£2700

Vehicle Features

1/3 to 2/3 split folding rear seats, 3 rear 3 point seatbelts, 3 rear

Miles: 112000

Fuel Type: Diesel

Transmission: Manual

Colour: Black

Engine Size: 1560

CO2 Emission: 95

Tax Band: A (£0 p/a)

Body Style: Hatchback

Reg: Kp14hpx

Technical Specs

DIMENSIONS

Length: 3962mm

Width: 1739mm

Height: 1460mm

Seats: 5

Luggage Capacity (Seats Up): 285L

Gross Weight: 1625KG

Max. Loading Weight: 545KG

PERFORMANCE & ECONOMY

Fuel Consum. (Urban Cold): 67.3MPG

Fuel Consum. (Extra Urban): 85.6MPG

Fuel Consum. (Combined): 78.5MPG

Fuel Tank Capacity: 50L

Number Of Gears: 5 SPEED

Top Speed: 115MPH

Acceleration 0-100 km/h: 10.9s

Engine Power BHP: 91.2BHP

head restraints, 4 speakers + 2 tweeters, ABS/EBFD/EBA, Automatic activation of hazard warning lights, Auxiliary input socket, Auxilliary 12V power socket, Body colour door handles, Body coloured bumpers, Body coloured door mirrors, Child safety lock, Chrome front fog light surround, Cloth upholstery, Cruise control + speed limiter, DAB Digital radio, Daytime running lights, Driver/passenger sunvisors and vanity mirrors, Driver and passenger airbags, Driver seat height adjust, Electric operated/heated door mirrors, EPAS, ESP, External temperature gauge, Follow me home headlights, Front and rear curtain airbags, Front fog lights, Front side airbags, Full size spare wheel, Height adjustable front headrests, Honeycomb radiator grille, Immobiliser, Intermittent rear wash/wipe, ISOFIX on outer rear seats, LED rear lights, Manual air conditioning, One touch electric front windows, Passenger airbag deactivation system, Peugeot connect with USB and bluetooth, Reach + rake adjustable steering column, Refrigerated glovebox, Remote central locking + deadlocks, Seatbelt warning lamp and buzzer, Service interval indicator, Steering wheel mounted remote controls, Traction control, Trip computer