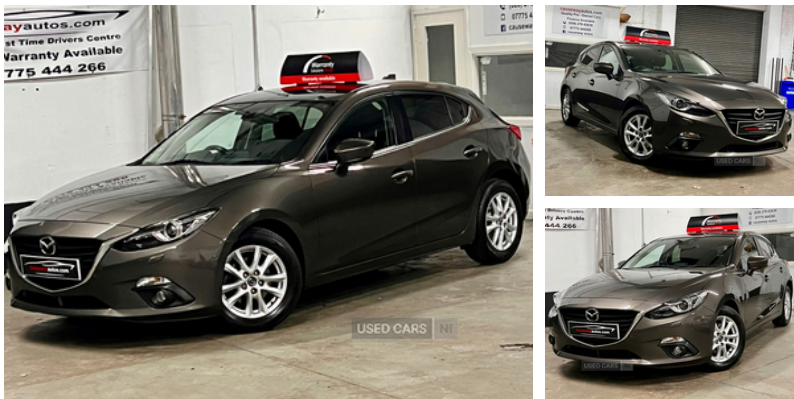


Mazda 3 2.0 SE-L Nav 5dr | Jan 2015
TOTALLY IMMACULATE. LOW MILEAGE

£6,995



Miles:	45000
Fuel Type:	Petrol
Transmission:	Manual
Colour:	Grey
Engine Size:	1998
CO2 Emission:	119
Tax Band:	C (£35 p/a)
Body Style:	Hatchback
Insurance group:	18E
Reg:	SM64UAY

Totally Immaculate inside and out
 45000 Miles & fully serviced
 2.0lt Petrol engine so no need to worry about DPF issues
 Sat nav
 Reversing Camera
 Keyless Ignition
 Only £35 road tax
 MOT to Oct 25
 3 Months Warranty
 Trade in available
 Great finance rates and warranties available.
 Usual dealer facilities.
 Causeway Autos are authorised and regulated by the Financial Conduct Authority.

Vehicle Features

'Lights On' warning buzzer, 2 coat hooks, 2 speed rear wiper, 3 point ELR front seatbelts with pretensioners, 3 rear 3 point seatbelts with ELR, 3 speed front intermittent wipe and electric wash, 5 headrests, 6 speakers, 7" touch screen, 16" alloy wheels, 60/40 split rear seat back, ABS+Electronic Brake force Distribution, Active Traction Control (TRC), Auto dimming interior mirror, Auxiliary input socket, Auxilliary 12V power socket, Bi-Xenon headlamp with auto levelling + Headlamp Wash, Bluetooth system, Body colour door handles, Body coloured bumpers, Body colour electric adjustable heated door mirrors with integral indicators, Body colour roof spoiler, Body colour side mouldings, Cigar lighter, Cloth upholstery, Colour satellite navigation, Crash sensor, Cruise control, Cupholders - 2 in rear centre armrest, Digital clock, Digital exterior temperature gauge, Driver's seat height adjustment, Driver's vanity mirror with

Technical Specs

DIMENSIONS	
Length:	4465mm
Width:	1795mm
Height:	1465mm
Seats:	5
Luggage Capacity (Seats Up):	364L
Gross Weight:	1815KG
PERFORMANCE & ECONOMY	
Fuel Consum. (Urban Cold):	43.5MPG
Fuel Consum. (Extra Urban):	65.7MPG
Fuel Consum. (Combined):	55.4MPG
Fuel Tank Capacity:	51L
Number Of Gears:	6 SPEED
Top Speed:	121MPH
Acceleration 0-100 km/h:	8.9s
Engine Power BHP:	118BHP



cover/ticket holder, Driver and passenger airbags, Driver seat lumbar adjustment, Dual exhaust pipes, Dual zone climate control, Dusk sensitive headlamps, Dynamic stability control, Electric folding door mirrors, Electric front/rear windows, Electric heated rear glass window, Electric hydraulic power assisted steering, Emergency brake assist, Emergency stop signalling system, Front and rear curtain airbags, Front centre console with storage box with tray, Front door pockets, Front fog lights, Front grab handles, Front side airbags, Heated front seats, Hill hold assist, Illuminated ashtray, Illuminated glovebox, Illuminated vanity mirrors, Immobiliser, Instrument panel light dimmer, Interior courtesy light, Isofix child seat attachment, Leather gearknob, Leather handbrake, Leather wrapped steering wheel, LED daytime running lights, lid + 2 cupholders, Luggage compartment lighting, Mobile App interface, Multi function display, Passenger airbag deactivate switch, Passenger seat back pocket, Passenger sunvisor with vanity mirror, Piano black interior trim, Pollen filter, Privacy glass, Rain and light sensors, Rear centre armrest, Rear grab handles with coathooks, Rear parking sensor, Remote central door locking, Remote fuel cap release, Seatbelt reminder front and rear, Service indicator, Shark fin roof aerial, Silver interior door handles, Single play CD/radio with MP3 compatability, Smart City Brake Support - SCBS, Steering wheel audio controls, Sunglasses holder, Tachometer, Thatcham Cat.1 alarm, Tilt/telescopic adjust steering wheel, Trip computer, Tyre pressure monitoring system, Tyre repair kit, USB/iPod connection, Welcome mode lighting