

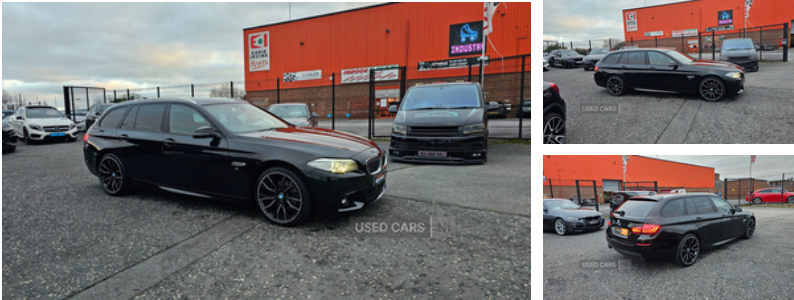


36A Donaghadee Road Newtownards, Newtownards, BT23 7EU
 Trevor: 07761731686 | Chris: 02891813377

BMW 5 Series 520d [190] M Sport 5dr Step Auto | Mar 2016

£13,495

ESTATE, BLACK LEATHER, 6 MONTH WARRANTY, FINANCE AVAILABLE*



New arrival

2016 Bmw 520d msport

8 speed Automatic with paddle shift

65k miles

Hpi clear

Finished in jet black with black heated leather

sat nav

Bluetooth

climate control

parking sensors

adaptive cruise control

dab radio

Lane assist

Electric tailgate

20 inch wheels

Nice low milage example

6 months warranty, fully serviced, motd and valeted

£13,495

What's app walk round video available

Part exchange welcome

Elite Autos NI

41 Balloo Road

Miles:	65000
Fuel Type:	Diesel
Transmission:	Semi-Automatic
Colour:	Black
Engine Size:	1995
CO2 Emission:	123
Tax Band:	D (£160 p/a)
Body Style:	Estate
Insurance group:	36D
Reg:	OIW9088

Technical Specs

DIMENSIONS

Length:	4907mm
Width:	1860mm
Height:	1475mm
Seats:	5
Luggage Capacity (Seats Up):	560L
Gross Weight:	2385KG
Max. Loading Weight:	650KG

PERFORMANCE & ECONOMY

Fuel Consum. (Urban Cold):	51.4MPG
Fuel Consum. (Extra Urban):	67.3MPG
Fuel Consum. (Combined):	60.1MPG
Fuel Tank Capacity:	70L
Number Of Gears:	8 SPEED
Top Speed:	140MPH
Acceleration 0-100 km/h:	8s



Tel. 07568956920
02891 813377

Finance available* no final payment

Part exchange welcome

Credit /debit card facilities

*All finance subject to status

Vehicle Features

3 Spoke M sports leather steering wheel, 12V socket in rear centre console, ABS/EBD, Advanced Head Protection System front + rear, Aluminium brake calipers, Anthracite Velour floor mats, Asymmetric split fold rear seat, Auto dimming rear view mirror, Automatic Stability Control (ASC), Automatic tailgate operation, Auxiliary point for auxiliary devices, Bluetooth audio streaming, BMW emergency call, BMW Online services, BMW professional radio/CD/MP3, BMW Teleservices, Body colour door handles, Body coloured bumpers, Body coloured door mirrors, Body coloured side sills, CBC - (Cornering brake control), Check control system, Chrome kidney grille with black vertical slats, Crash Sensor - activates hazard/interior lighting + unlocks doors, DAB Digital radio, Diesel particulate filter, Driver/front passenger side airbags, Driver/Passenger airbags (Impact dependent), DSC+, Dynamic brake control, Dynamic Traction Control - DTC, Electric + heated aspheric door mirrors, Electric front and rear windows with fingertip open/close + anti-trap all round, Electromechanical parking brake, Engine immobiliser, Fogging sensor for front windscreen, Front/rear courtesy lights with soft on/off dimming, Front/rear Parking distance control, Front centre armrest, Front cupholders x 2, Front footwell lights, Front head restraints with anti-whiplash, Front passenger airbag deactivation, Front passenger seat occupancy sensor, Front reading lights, Fuel cut off safety device, Green tinted heat insulating glass, Headlight range control-electric, Headlight washers, Heated front seats, Heated windscreen washer jets, Hill start assist, Illuminated glovebox with lock, Inertia reel front seatbelts+pretensioners, Isofix rear child seat preparation, Keyless ignition, Locking wheel bolts, Luggage compartment release button in drivers A pillar, Luggage compartment with electric unlocking via key remote control, M aerodynamic body kit, Multi-function controls for steering wheel, On board computer, Opening rear tailgate window, Outside temperature display, Personal Profile, Rain sensor with auto light activation

system, Reach + rake adjustable steering column, Rear centre armrest with 2 cupholders + storage, Rear door child safety locks, Rear headrests, Rear wiper, Remote central locking, Remote control Thatcham category 1 alarm, Retractable dividing luggage net, Retractable luggage cover, Run flat tyres, Securing rings in luggage compartment, Self levelling rear air suspension, Service interval indicator, Shark fin roof aerial, Speed limiter, Sunvisors with illuminated vanity mirrors, Three inertia reel rear seatbelts, Twin chrome exhaust tailpipes, Tyre pressure monitoring system, Warning triangle and first aid kit