

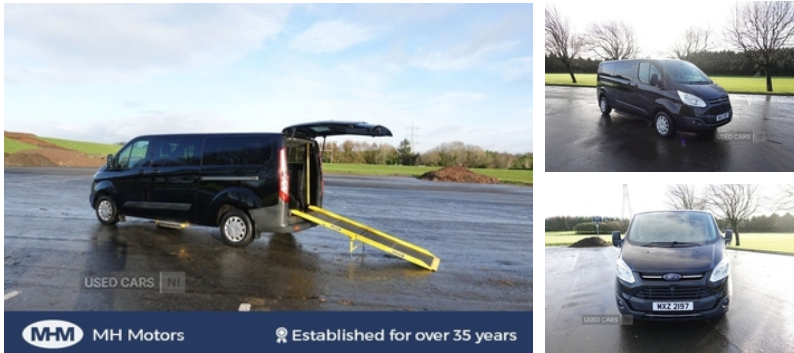


670 Antrim Road Newtownabbey, Newtownabbey, BT36 4RG  
028 9083 6946 | 07817595531

## Ford Transit Minibus 2.0 TDCi 310 Trend Panel Van 5dr Diesel Manual L1 ... | 2018

**WHEEL CHAIR CONVERSION (EASILY REMOVABLE) 9 SEATER MINI BUS**

**£18,995** + VAT



<b>Miles:</b>	39209
<b>Fuel Type:</b>	DIESEL
<b>Transmission:</b>	Manual
<b>Colour:</b>	Black
<b>Engine Size:</b>	1997
<b>Tax Band:</b>	Light goods vehicle (£335 p/a)
<b>Body Style:</b>	Minibus
<b>Reg:</b>	MXZ2197

M H Motors presents this spacious Ford Transit Custom 2.0 Tdci 310 Trend Panel Van, Manual 6 Speed, Diesel, 2018, 39,209 miles, Black in colour, PSV-12-2025. This superb Panel Van comes with a wheel chair conversion and can also seat up to 9 people (Rear wheelchair ramp is easily removable should you wish to take it out). It comes with service history and is PSV'd until December 2025, has power steering, electric windows and mirrors, rear privacy glass, remote central locking, bluetooth, cd player, front fogs, immaculate colour coded bodywork in black and fantastic spacious interior. Superb driving van with side opening to accommodate passengers and rear opening door accessible for Wheel chair access. Priced to sell £18,995 + VAT. Finance Available. Tel. 02890836946 or 07817595531 MH Motors has been established for over 35 years and is located in the industrial area of Mallusk Newtownabbey, only 7 miles from Belfast just off the main M2 Motorway. We have over 120 vehicles in stock offering a wide selection of vehicles, seldom will you find a more varied selection under one roof. Our flood lit forecourt and indoor inspection bay allow all weather viewing during the winter months. Finance options available in house. Please enquire before going to third party online finance brokers

### Vehicle Features

'Guide me home' headlights, 2 Load tie down loops, 2 x 12V power outlets, 2nd remote key, 3 point seatbelts for all seats, 3rd Row left and right fixed windows, 8 speakers, 9 SEATS, 50/50 split folding rear seat backrest, 80 litre fuel tank, ABS, Alarm, Assist handle over passenger door, Audio controls mounted on



steering wheel, Automatic headlights, Automatic windscreen wipers, Auto relocking, Auto start/stop system, Aux input socket, Body colour door and tailgate handles, Body coloured bumpers, Cloth upholstery, Coat hook, Configurable interior lighting/battery saver - 30 minutes, CRUISE CONTROL, Daytime running lights, Diesel particulate filter, Driver and passenger sun visors, Drivers airbag, Drivers seatbelt not fastened warning buzzer and lamp, Dynamic stability control, Easy clean load floor, Easy fuel capless refuelling system, Electric front windows with one touch facility for driver and front passenger, ESP + EBA, FINANCE AVAILABLE, Ford Eco mode, Front and rear parking aid + front fog lamps, Front grab handles, Front passenger airbag with deactivation, Front seatbelt pretensioners, Full moulded headlining, Full wheelcovers, Half height load compartment trim boards, Header mounted courtesy lights, Headlamp levelling, Heated rear window, Heated windscreen, Height adjustable head restraints, Height and reach adjustable steering wheel, Illuminated footwell, Illuminated lockable glovebox, Immobiliser, Intermittent front wash/wipe, Isofix child seat attachments - centre and offside 2nd row seats, Leather steering wheel and gear knob, LH sliding side load door, Load compartment interior light, Map reading lights, Mud flaps front and rear, PARKING SENSORS, PAS, Passenger underseat storage box, Power folding electric heated and adjustable door mirrors, Projector headlights with static cornering function, Quickclear heated windscreen, Rear auxilliary power point socket, Rear cargo door, Rear wash wipe, Remote central locking, Roof console (front seats), Rubber floor covering, Rubber load floor cover, Safety autoreverse for electric windows, Split folding backrest in passenger seat, Trip computer, Twin unglazed rear doors, Tyre pressure monitor, WHEELCHAIR CONVERSION