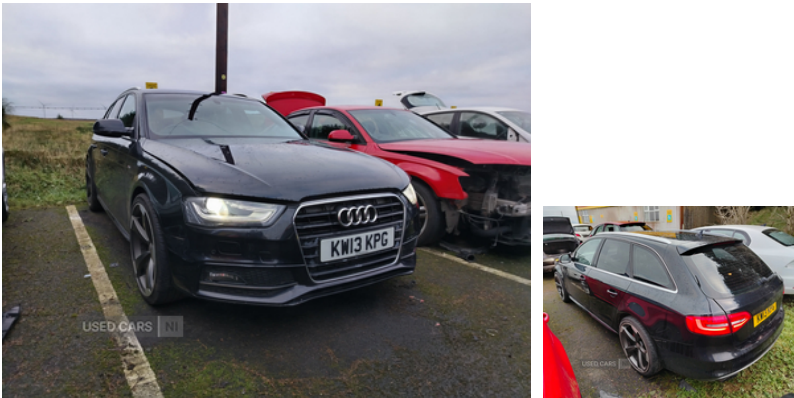




## Audi A4 2.0 TDI 150 S Line 5dr | Aug 2013



### Vehicle Features

3 point rear seatbelts x3, 3 zone climate control, 12V socket in luggage compartment, ABS/EBD, Acoustic windscreen, Adaptive driver and front passenger airbags, Aluminium door sill trims, Auto dimming rear view mirror, Automatic headlights + automatic windscreen wipers, Black headlining, Body colour bumpers, Body colour door handles, Body colour door mirrors, Chrome fog light surround, Chrome rolled exhaust, DAB digital radio module, Driver's seat height adjustment, Driver information centre with colour display in instrument panel, Electric front lumbar support with horizontal and vertical adjustment, Electric front windows, Electric heated door mirrors, Electric rear windows, Electro-mechanical PAS, Electromechanical parking brake, ESP, Exterior aluminium pack - A4, First aid kit, Front and rear headrests, Front centre armrest with 12v socket, Front fog lights, Front seatbelt pretensioners + load limiters, Front side airbags, Front sport seats, Headlight range control, Headlight washer jets, Intelligent Key, Interior chrome pack - A4, Isofix child seat preparation for front passenger/outer rear seats inc passenger airbag deactivation, LED daytime running lights, Locking wheel bolts, Perforated leather gearknob, Power boot opening and closing, Reach + rake adjustable steering column, Rear armrest, Rear wiper, Remote central locking, Roof spoiler, Service interval indicator, S line exterior styling pack - A4 Avant, S line sill plates, Space saver spare wheel, Split folding rear seats, Thatcham category 1 alarm + immobiliser, Tool kit, Traction control, Warning triangle, Xenon

<b>Fuel Type:</b>	Diesel
<b>Transmission:</b>	Manual
<b>Colour:</b>	Black
<b>Engine Size:</b>	1968
<b>CO2 Emission:</b>	124
<b>Tax Band:</b>	D (£160 p/a)
<b>Body Style:</b>	Estate
<b>Insurance group:</b>	23E
<b>Reg:</b>	KW13KPG

### Technical Specs

DIMENSIONS	
<b>Length:</b>	4699mm
<b>Width:</b>	1826mm
<b>Height:</b>	1436mm
<b>Seats:</b>	5
<b>Luggage Capacity (Seats Up):</b>	490L
<b>Gross Weight:</b>	2105KG
<b>Max. Loading Weight:</b>	570KG
PERFORMANCE & ECONOMY	
<b>Fuel Consum. (Urban Cold):</b>	50.4MPG
<b>Fuel Consum. (Extra Urban):</b>	67.3MPG
<b>Fuel Consum. (Combined):</b>	60.1MPG
<b>Fuel Tank Capacity:</b>	63L
<b>Number Of Gears:</b>	6 SPEED
<b>Top Speed:</b>	129MPH
<b>Acceleration 0-100 km/h:</b>	9.5s

headlights

**Engine Power BHP:** 147.5BHP

