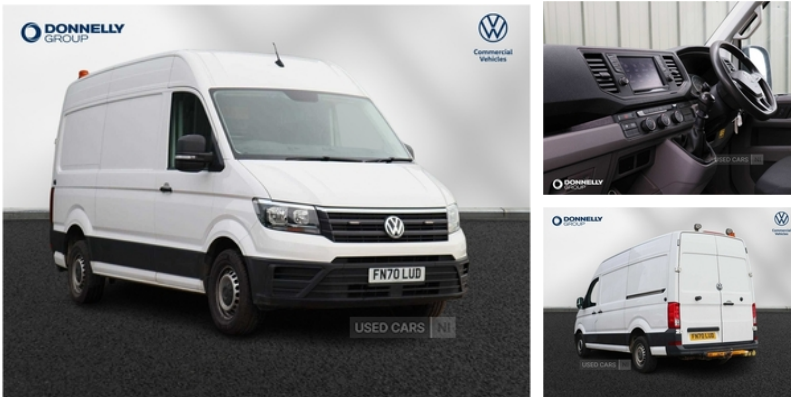


Volkswagen Crafter 2.0 TDI 177PS Trendline High Roof Van | Oct 2020

£17,995 + VAT



| | |
|----------------------|--------------------------------|
| Miles: | 48091 |
| Fuel Type: | Diesel |
| Transmission: | Manual |
| Colour: | White |
| Engine Size: | 1968 |
| Tax Band: | Light goods vehicle (£335 p/a) |
| Body Style: | Van |
| Reg: | FN70LUD |

Volkswagen Crafter 2.0 TDI 177PS Trendline High Roof Van

Vehicle Features

1 rigid key, 3 point inertia reel belt on all seats, ABS, Air recirculation system, Anti-lock Braking System, Ashtray, Automatic hazard light with emergency braking, Automatic post collision braking system, Body colour roof, Centre console storage tray, CFCU preparation, Charcoal filter, Crosswind assist, Cruise control with speed limiter, Document holder on centre console, Drinks holders, Driver alert system, Driver seatbelt warning light, EBA, EBD, EDL, Electric windows, Electromechanical Servotronic steering, Engine immobiliser, ESP, Front/rear cupholders, Front assist including city emergency braking, Fully adjustable suspension type driver seat, Fully adjustable suspension type drivers seat, Grab handles on rear entry pillars, Handbrake grip + gaiter in leather, HBA, Height adj front seatbelts/belt force limiters, Height adjustable head restraints, Height adjustable seatbelts for outer cab seats, Height and reach adjustable steering wheel, Illuminated glove compartment with lockable lid, including 2 reading lights, including 2 reading lights, Indicators in front door mirrors, Integral step in front bumper, Interior light, Interior light, Interior light, Interior light, Lights on warning buzzer, Locking fuel cap, Parking brake - hill hold control, Remote central/dead locking, Rev counter, right, right, Service indicator, Storage compartments in doors and in step, Storage compartments in doors and in step, Storage tray on dashboard, switchable by door, switchable by door, TCS, Temp spare wheel, Two 12V outlets in the cab (in the dashboard), Without rear side trim panel passenger load compartment

Technical Specs

| | |
|-------------------------------------|----------------|
| DIMENSIONS | |
| Length: | 5986mm |
| Width: | 2427mm |
| Height: | 2590mm |
| Seats: | 3 |
| Luggage Capacity (Seats Up): | Not AvailableL |
| Gross Weight: | 3500KG |
| PERFORMANCE & ECONOMY | |
| Fuel Consum. (Combined): | 28.3MPG |
| Fuel Tank Capacity: | 75L |
| Number Of Gears: | 6 SPEED |
| Top Speed: | 103MPH |
| Engine Power BHP: | 174.3BHP |



